

ODYSSEY



**DESIGN + PERFORMANCE™**



Strong and authentic,  
the Sunbrella® collections  
take you to new fabric horizons.

The beauty in simplicity  
characterizes the Odyssey Collection.  
This timeless collection is a balance  
between essential and functional.







---

ARCH R052 140  
**ARCHI CONCRETE**





---

NAT 10101 140  
**NATTÉ** TONKA

NAT 10235 140  
**NATTÉ** AMBER



# ODYSSEY

The beauty in simplicity  
characterizes the Odyssey Collection.





---

CHA2 J193 140  
**CHARTRES PEARL**

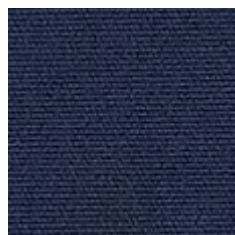
SAV2 J233 140  
**SAVANE COCONUT**

SJA 18021 00 137  
**HERITAGE RUST**



# SOLIDS & STRIPES

Cat.C



SJA 3991 137  
**BLAZER**

**NEW**



SJA 5499 137  
**TRUE BLUE**



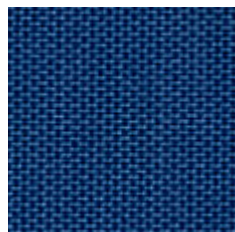
SJA 5416 137  
**ARUBA**



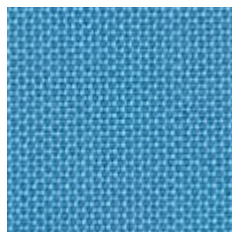
SJA 3944 137  
**CHARRON**



SJA 3738 137  
**MACAO**



SJA 3717 137  
**RIVIERA BLUE**

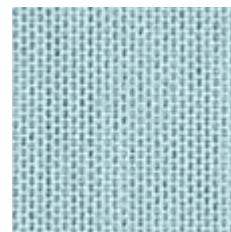


SJA 3990 137  
**MYOSOTIS**

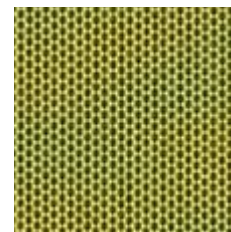
**NEW**



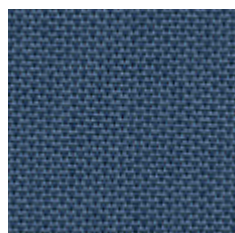
SJA 3793 137  
**MINERAL BLUE CHINÉ**



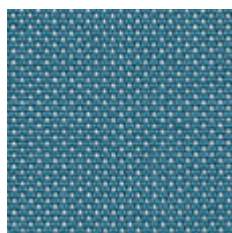
SJA 3964 137  
**CURAÇAO**



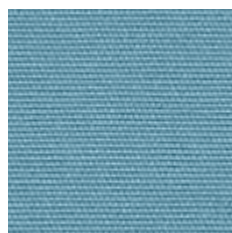
SJA 3970 137  
**LICHEN**



SJA 3942 137  
**BLUE STORM**



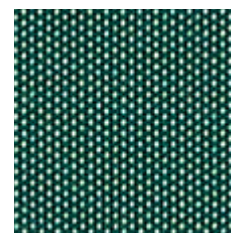
SJA 3941 137  
**ADRIATIC**



SJA 5420 137  
**MINERAL BLUE**



SJA 3967 137  
**MINT**



SJA 3987 137  
**ALPINE**

**NEW**



SJA 3778 137  
**QUADRI GREY**

REPEAT: 22,71 cm



SJA 3776 137  
**PORTO BLUE CHINÉ**

REPEAT: 19,95 cm



SJA 3777 137  
**PORTO GREY CHINÉ**

REPEAT: 19,95 cm

More Solids colours are available in the Bahia collection



# SOLIDS & STRIPES

Cat.C



SJA 3984 137  
**CANARY**

**NEW**



SJA 48009/00 137  
**ARBOR PEBBLE**



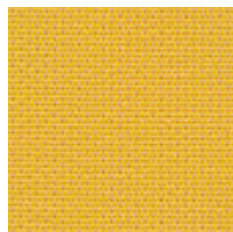
SJA 5476 137  
**HEATHER BEIGE**



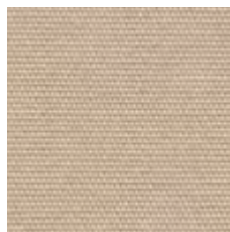
SJA 3756 137  
**LEAD CHINÉ**



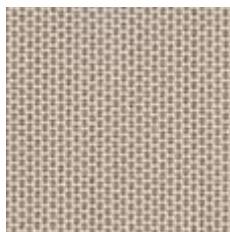
SJA 3757 137  
**FLANELLE**



SJA 3938 137  
**MIMOSA**



SJA 5422 137  
**ANTIQUE BEIGE**

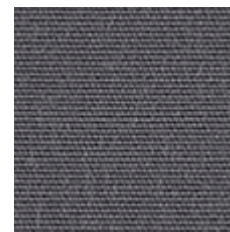


SJA 3988 137  
**STONE**

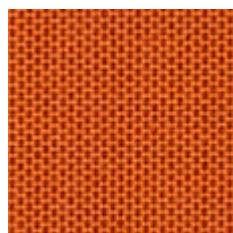
**NEW**



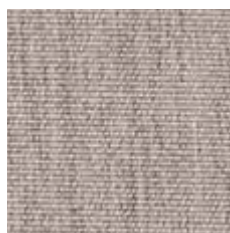
SJA 3706 137  
**SHINGLES**



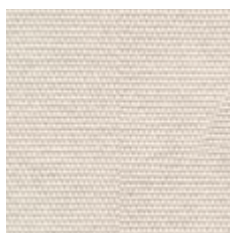
SJA 3737 137  
**ARDOISE**



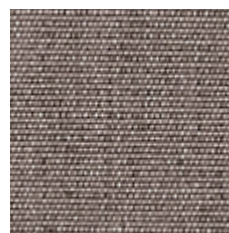
SJA 3969 137  
**PUMPKIN**



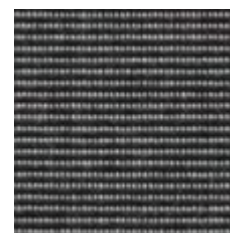
SJA 3780 137  
**LIN**



SJA 5453 137  
**CANVAS**



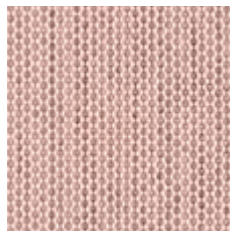
SJA 3907 137  
**TAUPE CHINÉ**



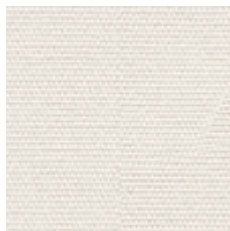
SJA 3705 137  
**CHARCOAL**



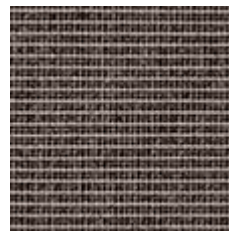
SJA 3939 137  
**PAPRIKA**



SJA 3965 137  
**BLUSH**



SJA 5404 137  
**NATURAL**



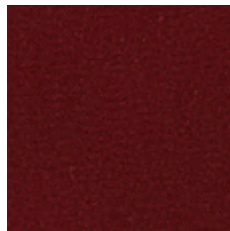
SJA 3792 137  
**DARK SMOKE**



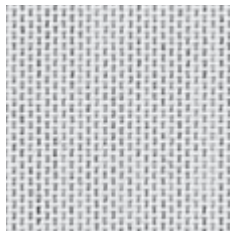
SJA 3906 137  
**CARBON**



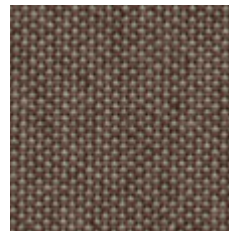
SJA 5477 137  
**LOGO RED**



SJA 5436 137  
**BURGUNDY**



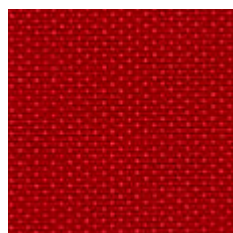
SJA 3966 137  
**MARBLE**



SJA 3127 137  
**MINK BROWN**



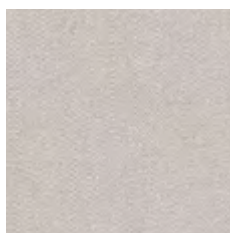
SJA 3758 137  
**SOOTY**



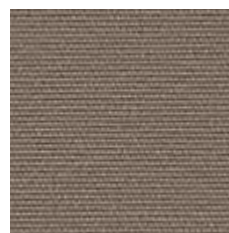
SJA 3968 137  
**PEPPER**



SJA 3728 137  
**PARIS RED**



SJA 3741 137  
**SILVER GREY**



SJA 3729 137  
**TAUPE**

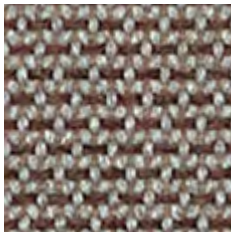


SJA 5408 137  
**BLACK**

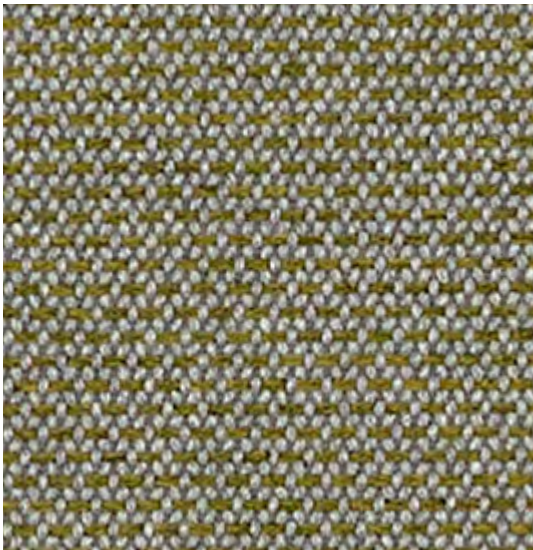




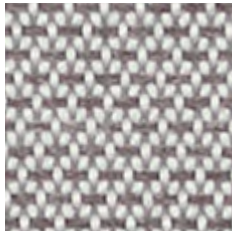
ARCH R051 140  
**FRAME**



ARCH R054 140  
**IPE**



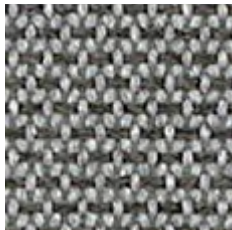
ARCH R055 140  
**OXIDE**



ARCH R052 140  
**CONCRETE**



ARCH R056 140  
**SLATE**

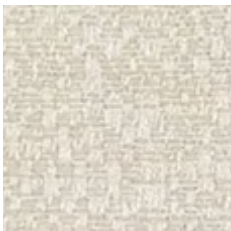


ARCH R053 140  
**LEAD**

CHARTRES  
Cat.E



CHA2 J189 140  
**HEATHER**



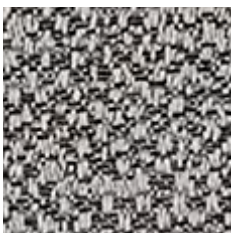
CHA2 J193 140  
**PEARL**



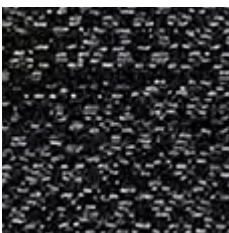
CHA2 J194 140  
**SILVER**



CHA2 J191 140  
**GREY**



CHA2 J348 140  
**DRIZZLE**

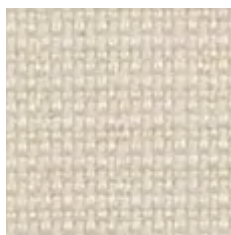


CHA2 J182 140  
**SOOTY**

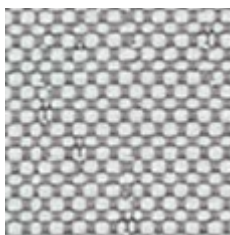


# SAVANE

Cat.D



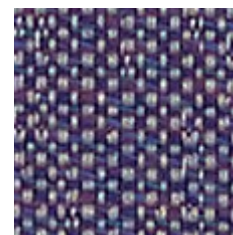
SAV2 J235 140  
**WHITE**



SAV2 J349 140  
**WHISPER** **NEW**



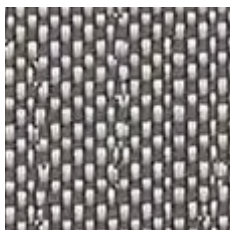
SAV2 J233 140  
**COCONUT**



SAV2 J355 140  
**MIDNIGHT** **NEW**



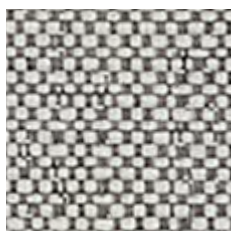
SAV2 J234 140  
**GREY**



SAV2 J236 140  
**ZINC**



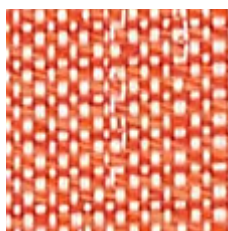
SAV2 J354 140  
**SPRING** **NEW**



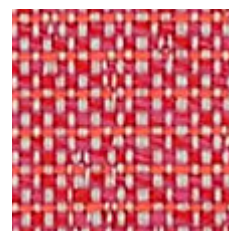
SAV2 J350 140  
**NIMBUS** **NEW**



SAV2 J351 140  
**TORNADO** **NEW**



SAV2 J353 140  
**DAWN** **NEW**



SAV2 J352 140  
**ERIS** **NEW**

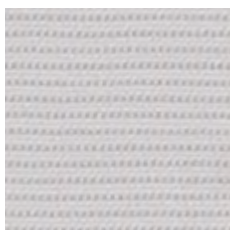
# RELAX

Cat.C

**NEW**



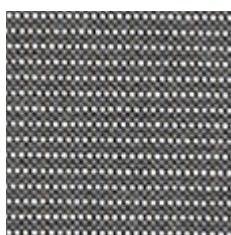
RLX B119 150  
**GRAPHITE**



RLX B100 150  
**CLOUD**



RLX B113 150  
**STORM**



RLX B118 150  
**STONE**



RLX B101 150  
**BIRCH**



RLX B102 150  
**SAND**



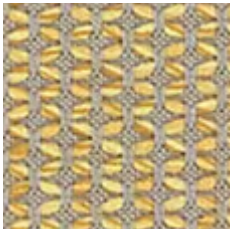
# MAJESTIC

Cat.D

NEW



MAJ J342 140  
**AMETHYST**



MAJ J338 140  
**CITRINE**



MAJ J339 140  
**QUARTZ**



MAJ J335 140  
**JAGER**



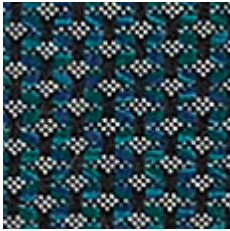
MAJ J340 140  
**PARAIBA**



MAJ J337 140  
**CRYSTAL**



MAJ J336 140  
**RIVER**



MAJ J341 140  
**NAOS**

# SLING

Cat.D



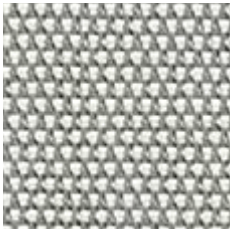
LOGAN



SAILING



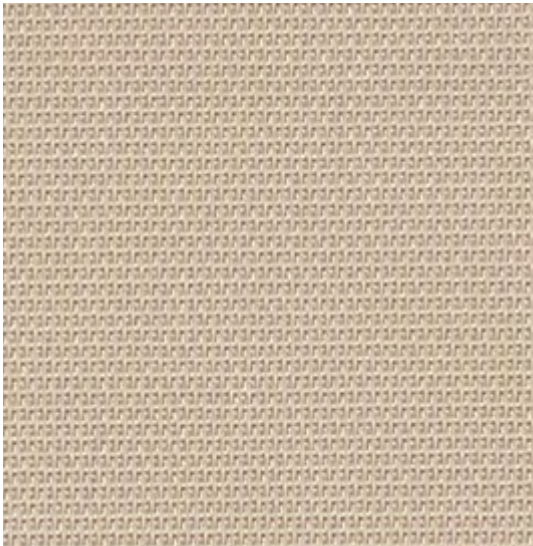
AUGUSTINE



SLI 50143 10 137  
**SAILING SEAGULL**



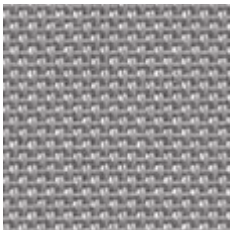
SLI 50045 18 137  
**LOGAN GRAPHITE**



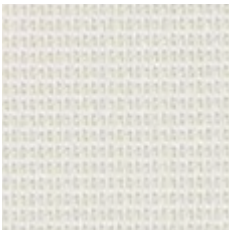
SLI 50045 06 137  
**LOGAN SAND**



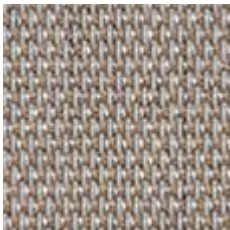
SLI 50045 02 137  
**LOGAN TAUPE**



SLI 5928 44 137  
**AUGUSTINE SILVER**



SLI 50045 07 137  
**LOGAN SNOWY**

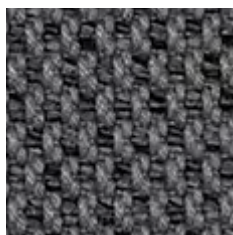


SLI 50143 19 137  
**SAILING SPACE**



# LOPI

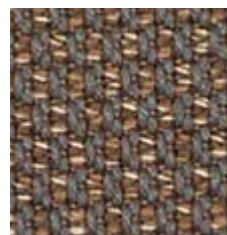
Cat.E



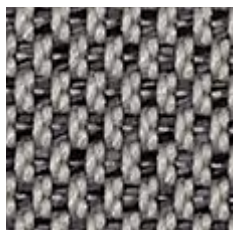
LOP R013 140  
**SHADOW**



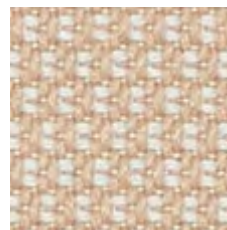
LOP R019 140  
**SAND**



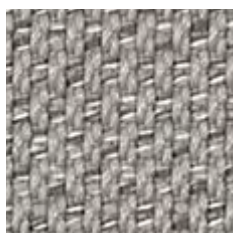
LOP R014 140  
**COCONUT**



LOP R017 140  
**CHARCOAL**



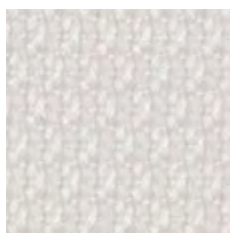
LOP R034 140  
**ANTIQUE**



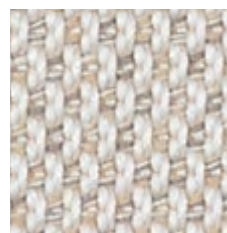
LOP R015 140  
**SILVER**



LOP R043 140  
**ASH** NEW



LOP R033 140  
**SNOW**

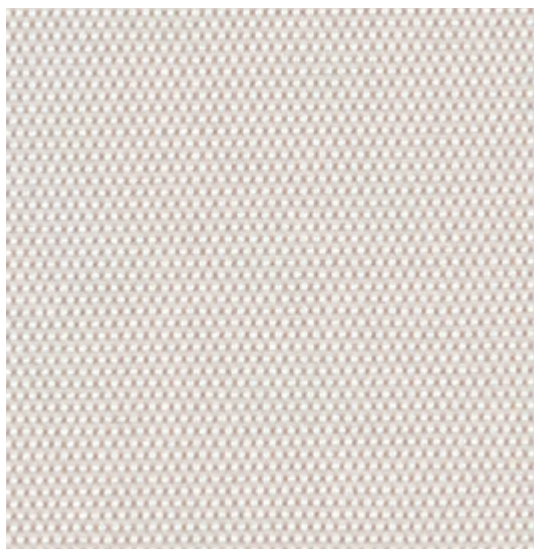


LOP R018 140  
**MARBLE**

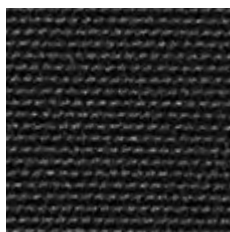
More Lopi colours are available in the Bahia collection

# DEAUVE

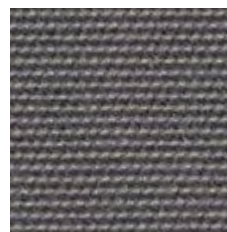
Cat.D



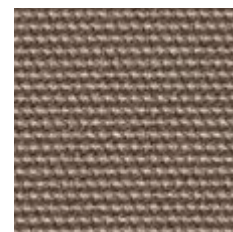
DEA 5453 140  
**CANVAS**



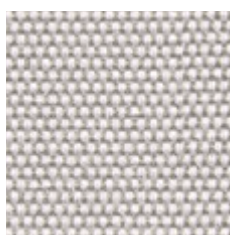
DEA 5032 140  
**BLACK**



DEA 3737 140  
**ARDOISE**



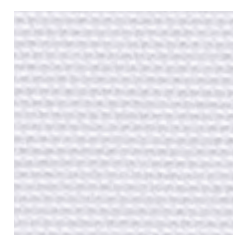
DEA 3729 140  
**TAUPE**



DEA 3741 140  
**SILVER GREY**

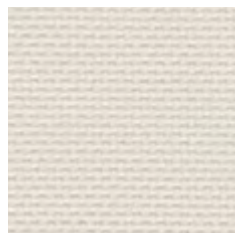


DEA 3977 140  
**CHALK**

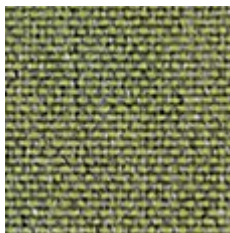


DEA 5404 140  
**WHITE**





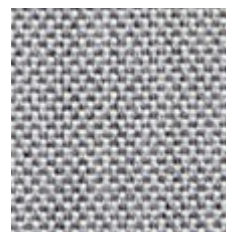
NAT 10020 140  
**WHITE**



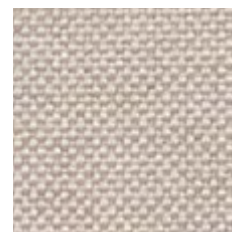
NAT 10233 140  
**PISTACHIO** **NEW**



NAT 10064 140  
**CARBON SKY**



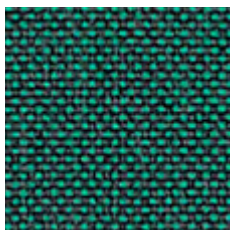
NAT 10022 140  
**GREY CHINÉ**



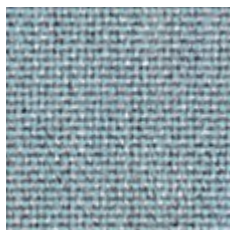
NAT 10151 140  
**LINEN CHALK**



NAT 10014 140  
**NATURE**



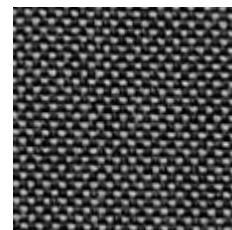
NAT 10232 140  
**IVY** **NEW**



NAT 10025 140  
**FROSTY CHINÉ**



NAT 10155 140  
**TAUPE CHALK**



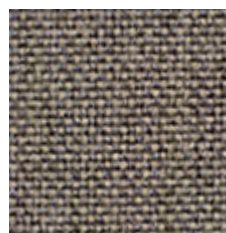
NAT 10059 140  
**DARK TAUPE**



NAT 10021 140  
**CANVAS**



NAT 10235 140  
**AMBER** **NEW**



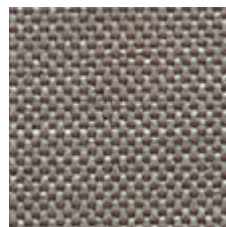
NAT 10065 140  
**CARBON BEIGE**



NAT 10063 140  
**CHARCOAL CHINÉ**



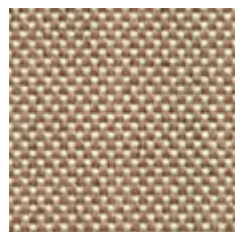
NAT 10150 140  
**HEATHER CHALK**



NAT 10040 140  
**NATURE GREY**



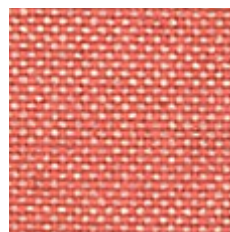
NAT 10030 140  
**SOOTY**



NAT 10028 140  
**HEATHER BEIGE**



NAT 10231 140  
**CARMINE** **NEW**



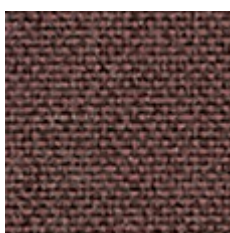
NAT 10234 140  
**FLAMINGO** **NEW**



NAT 10152 140  
**GRAUMEL CHALK**



NAT 10029 140  
**HEATHER GREY**



NAT 10101 140  
**TONKA** **NEW**





KOM J345 140  
TAWNY



KOM J343 140  
VETIVER



KOM J346 140  
COUA



KOM J347 140  
RAFFIA



KOM J344 140  
PEAT

# HERITAGE

## RENAISSANCE

Cat.D



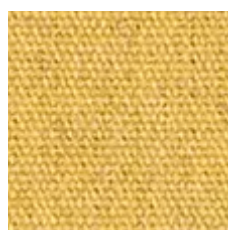
50% RECYCLED  
CONTENT



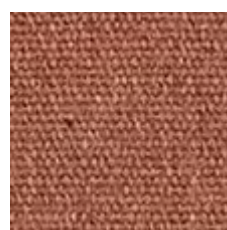
SJA 18011 00 137  
LEAF



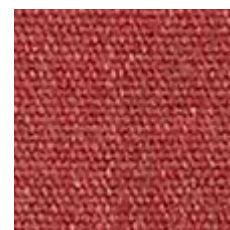
SJA 18012 00 137  
MOSS



SJA 18023 00 137 **NEW**  
DIJON



SJA 18021 00 137 **NEW**  
RUST



SJA 18022 00 137 **NEW**  
SCARLET



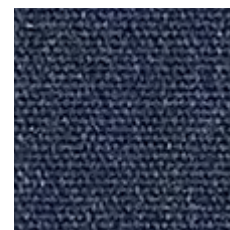
SJA 18018 00 137 **NEW**  
ALPINE



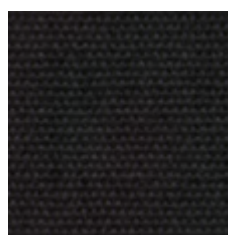
SJA 18015 00 137 **NEW**  
SLATE



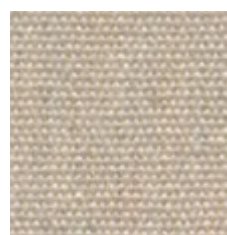
SJA 18001 00 137  
ASH



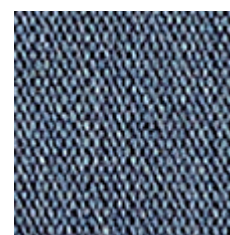
SJA 18017 00 137 **NEW**  
INDIGO



SJA 18009 00 137  
CHAR



SJA 18006 00 137  
PAPYRUS



SJA 18016 00 137 **NEW**  
SKY

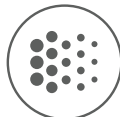


# DESIGN

but not only...



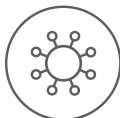
WATER & STAIN  
RESISTANT



UV/FADE  
RESISTANT



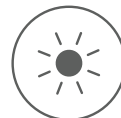
BLEACH  
CLEANABLE



MOLD/MILDEW  
RESISTANT



BREATHABLE  
COMFORT



SUN  
PROTECTION



# SUNBRELLA®

## A BRAND THAT CARES ABOUT THE ENVIRONMENT

From production to use, Sunbrella® fabrics combine quality with durability to reduce their impact on the environment.



### LESS WASTE

Our quality Sunbrella® fabrics do not rot or fade and are highly resistant over time. As our fabrics do not need to be replaced as often as traditional fabrics, they generate less waste.



### LOW WATER CONSUMPTION

In the solution-dyeing process, colour pigments are added to the yarn as it is spun, to guarantee colourfastness and save water. The small amount of water used in our weaving process is fully recycled in-house.



### PRODUCT LIFECYCLE MANAGEMENT

As part of its Renaissance program, Sunbrella® created the Heritage Renaissance line containing up to 50% recycled solution-dyed acrylic fibres.

Recycled fibres are sourced directly from production plants where waste is divided into colour groups and turned back into fibres. These fibres are then blended with the “virgin” Sunbrella® fibres.

Learn more at  
[sunbrella.com/sustainability](https://sunbrella.com/sustainability)



# ENVIRONMENTAL CERTIFICATIONS



## REACH REGULATION

Sunbrella® has developed treatments designed and applied in strict compliance with European REACH regulations.

REACH is a European regulation designed to improve the protection of human health and the environment from the risks posed by chemicals, while enhancing the competitiveness of the EU chemicals industry.



## QSEE CERTIFICATION

(Quality-Safety-Environment-Energy)  
ISO 9001, ISO 14001, ISO 45001 and ISO 50001

As part of our continuous improvement approach, and to better meet the needs of customers, our products are certified to international standards by Bureau Veritas Certification. These standards guarantee the consistent quality of our products, protect the ecosystem, improve energy performance and enhance the efficiency of our QSEE system.



## GREENGUARD CERTIFIED

Sunbrella® upholstery fabric has achieved GREENGUARD GOLD Certification. Sunbrella® upholstery fabrics are certified by GREENGUARD as contributing to healthy indoor air by being a very low emitting interior product.



## OEKO-TEX LABEL

A quality that meets human-ecological requirements. Awarded with the OEKO-TEX label (class II - products with direct contact to the skin), Sunbrella® fabrics are produced without hazardous substances and do not pose a threat to health, the skin or the environment.



## ZERO LANDFILL







For over 30 years, Sunbrella® has recycled its industrial wastes such as yarn and packaging. Today, every Sunbrella® manufacturing facility around the globe sends absolutely no waste to the landfill.



## 5 YEAR WARRANTY

Sunbrella® acrylic guarantees outstanding colourfastness.



	STANDARDS NORMES	ARCHI	CHARTRES	DEAUVE	HERITAGE	KOMO	LOPI	MAJESTIC	NATTÉ	RELAX	SAVANE	SLING AUGUSTINE	SLING LOGAN	SLING SAILING	SOLIDS & STRIPEs
COMPOSITION	-	99% Sunbrella® Acrylic 1% Polyester	100% Sunbrella® Acrylic	100% Sunbrella® Acrylic	50% recycled 47% Sunbrella® Acrylic 3% Polyester	100% Sunbrella® Acrylic	100% Sunbrella® Acrylic	100% Sunbrella® Acrylic	100% Sunbrella® Acrylic	100% Sunbrella® Acrylic	100% Sunbrella® Acrylic	11% Sunbrella® Acrylic 25% Polyester 64% PVC	19% Sunbrella® Acrylic 22% Polyester 59% PVC	35% Sunbrella® Acrylic 17.8% Polyester 47.2% PVC	100% Sunbrella® Acrylic
FINISH FINITION	-	Water-Repellent & Stain-Proof Déperlant & Anti-Taches													
MINIMUM USEFULL WIDTH LAIZE UTILE MINI/CM	EN 1773	140	140	140	137	140	140	140	140	150	140	137	137	137	137
WEIGHT POIDS	ISO 3801 g/sqm - g/m²	585	375	335	335	603	680	410	275	208	400	505	480	580	260
ROLL LENGTH LONGUEUR ROULEAU	LM ML	25	45	50	55	25	25	40	50	60	40	40	40	40	50
SPRAY TEST DÉPERLANCE	ISO 4920 Class / 5	5	5	5	5	4	4-5	5	5	4-5	5	-	-	-	5
COLOUR FASTNESS UV INDOOR SOLIDITÉ COULEURS UV INDOOR	ISO 105B02 Class / 8	8													
COLOUR FASTNESS TO WEATHER OUTDOOR SOLIDITÉ COLORIS INTEMPÉRIES OUTDOOR	ISO 105B04 - 1000 H Class / 5	4-5													
WASH COLOUR FASTNESS 30°C SOLIDITÉ COLORIS LAVAGE 30°C	ISO 105C06 Class / 5	5													
COLOUR FASTNESS DRY FRICTION SOLIDITÉ COLORIS FROTTEMENT SEC	ISO 105X12 Class / 5	5													
COLOUR FASTNESS WET FRICTION SOLIDITÉ COLORIS FROTTEMENT HUMIDE	ISO 105X12 Class / 5	5													
CARE INSTRUCTIONS ENTRETIEN		<div></div> <div>Ironing reinforces the treatment - Le repassage renforce le traitement</div>													

\*Sling : Do not iron - repassage interdit





**DESIGN + PERFORMANCE™**

**SUNBRELLA.COM**

EDITION JANUARY 2020 - SAS DICKSON CONSTANT - CAPITAL 12.640.000 EUROS - 381 347 970 R.C.S. LILLE MÉTROPOLE  
PHOTOS : EDOUARD AUFRAY - SUNBRELLA DESIGN + PERFORMANCE™ IS A TRADEMARK AND SUNBRELLA® IS A REGISTERED TRADEMARK OF GLEN RAVEN, INC.



\*ODY PLE INT20\*

# Bahia



**DESIGN + PERFORMANCE™**



Strong and authentic,  
the Sunbrella® collections  
take you to new fabric horizons.

Bahia celebrates a journey  
to exotic destinations.  
It's a surprising match of  
sophistication and intensity.





---

MARQ J384 140  
**MARQUETRY** MISTRAL

MEZ 10223 140  
**MEZZO** HENNA





# Bahia

Bahia celebrates a journey  
to exotic destinations.

---

DOM R048 140  
**DOMINO POKER**

DOM R047 140  
**DOMINO ROULETTE**

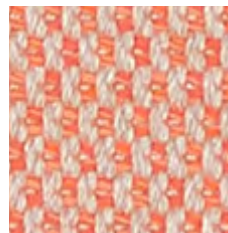




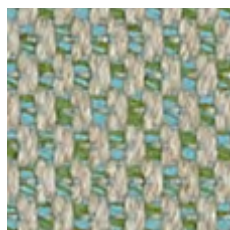
LOP R042 140  
**NENUPHAR**



LOP R039 140  
**BISCUIT**



LOP R041 140  
**TANGERINE**

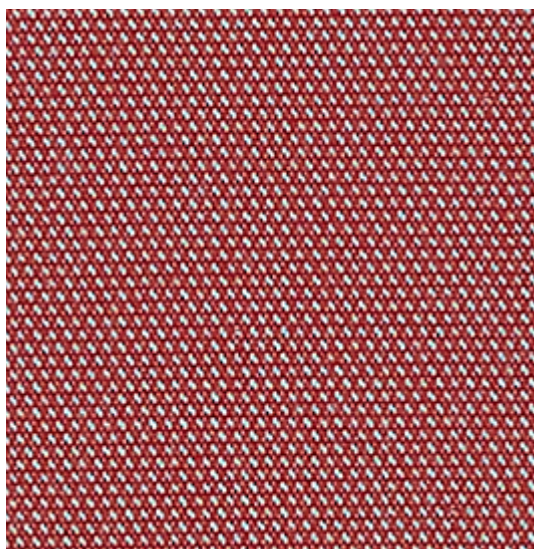


LOP R038 140  
**BELDI**

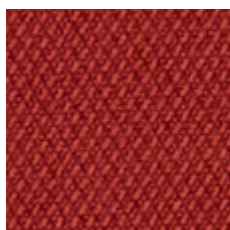


LOP R040 140  
**AZALEA**

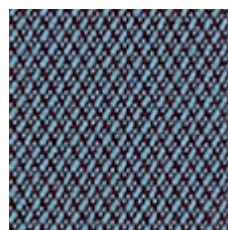
More Lopi colours are available in the Odyssey collection



MEZ 10224 140  
**SCALE**



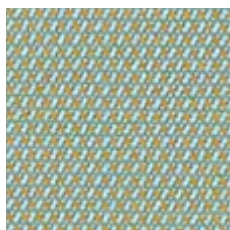
MEZ 10223 140  
**HENNA**



MEZ 10225 140  
**FEATHER**



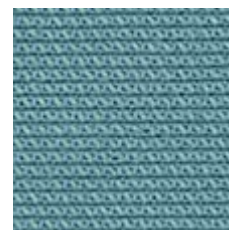
MEZ 10226 140  
**TROPIC**



MEZ 10229 140  
**OPAL**



MEZ 10228 140  
**CELADON**



MEZ 10227 140  
**ATLAS**



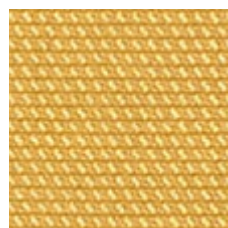
MEZ 10222 140  
**TIGERLILY**



MEZ 10221 140  
**CORAL**



MEZ 10220 140  
**TURMERIC**



MEZ 10219 140  
**SULFUR**

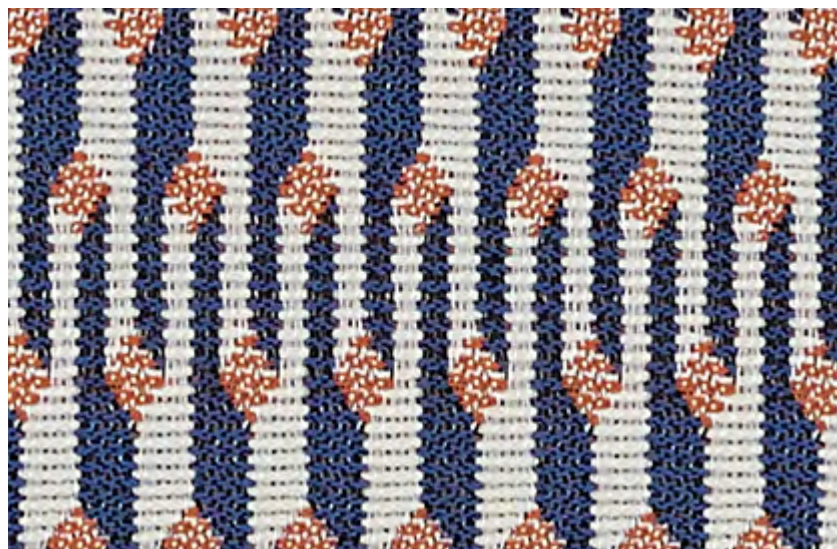


# MARQUETRY

Cat.E

NEW

REPEAT:  
1,5 cm  $\updownarrow$  9,5 cm



MARQ J384 140  
**MISTRAL**



MARQ J381 140  
**ZEPHYR**



MARQ J382 140  
**BORA**



MARQ J383 140  
**SHAMAL**



MARQ J385 140  
**SIROCCO**



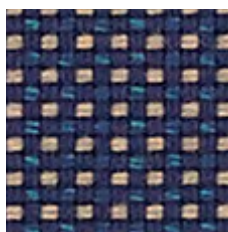
# DOMINO

Cat.E

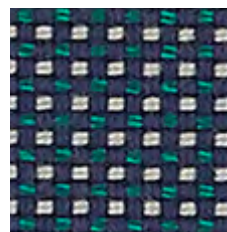
NEW



DOM R047 140  
**ROULETTE**



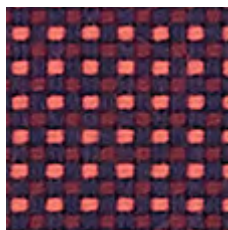
DOM R050 140  
**JACKPOT**



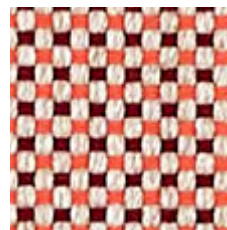
DOM R048 140  
**POKER**



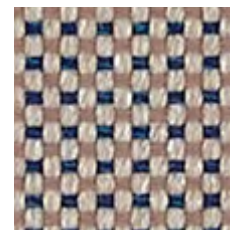
DOM R045 140  
**JOKER**



DOM R049 140  
**CASINO**



DOM R046 140  
**CRAPS**



DOM R044 140  
**LOTO**

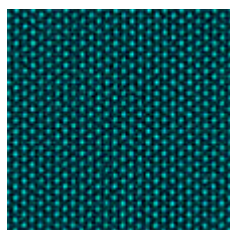
# SOLIDS

Cat.C

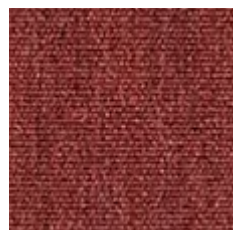
NEW



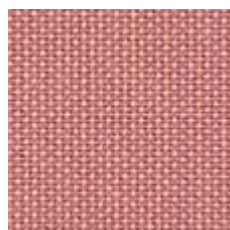
SJA 3983 137  
**ALMOND**



SJA 3986 137  
**RAINFOREST**



SJA 3982 137  
**AUTUMN**



SJA 3989 137  
**OPERA**



SJA 3985 137  
**INK**

More Solids colours are available in the Odyssey collection

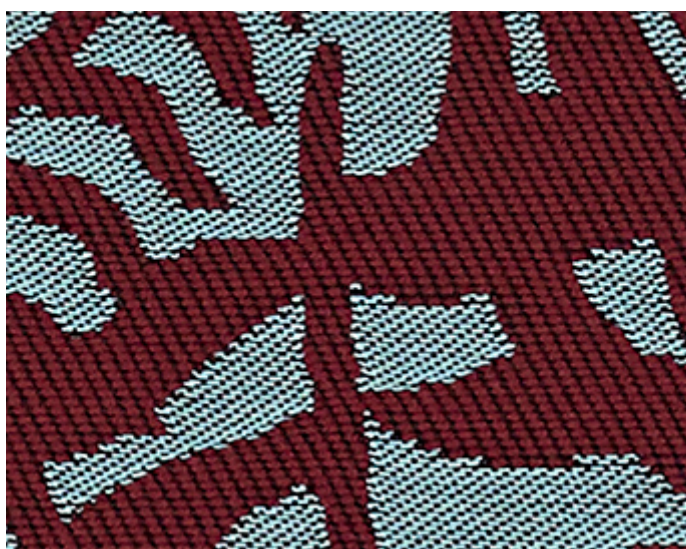




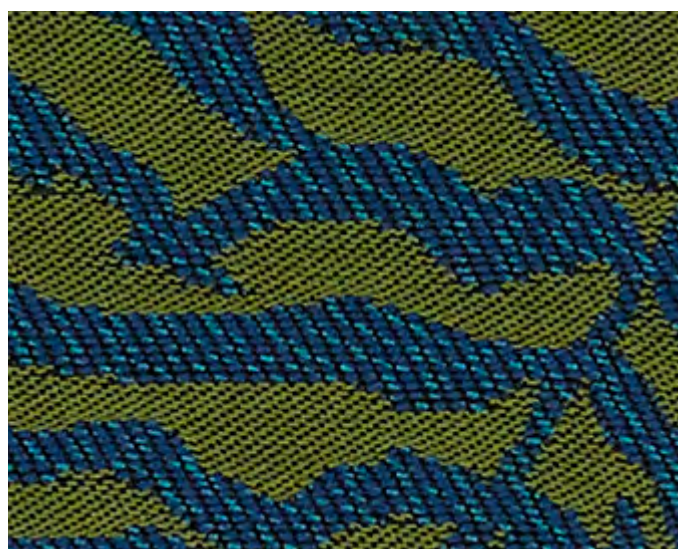
IKE J330 140  
**CANOPY**



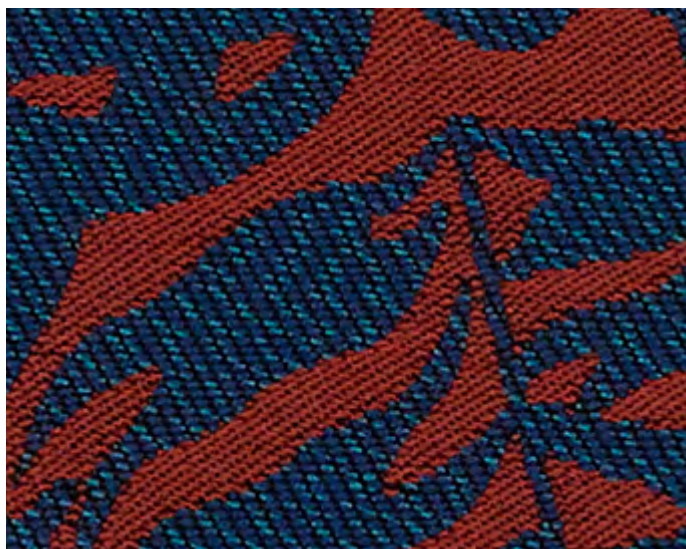
IKE J332 140  
**SAFARI**



IKE J333 140  
**POLAR**



IKE J331 140  
**BAYOU**



IKE J334 140  
**CANYON**



IKE J369 140  
**UYUNI**

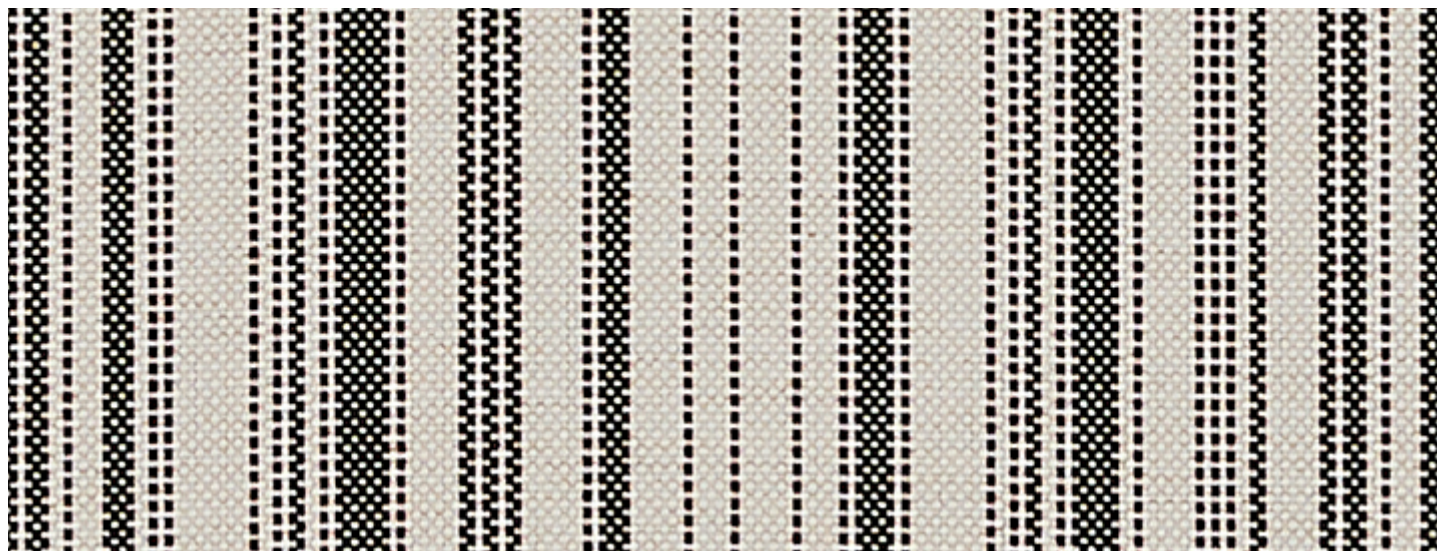


# FOUTAH

Cat.D

NEW

REPEAT:  
17,5 cm



FOU 3981 140  
**PÉTANQUE**



FOU 3978 140  
**PASTIS**



FOU 3980 140  
**OLIVE**



FOU 3979 140  
**CYCLADES**

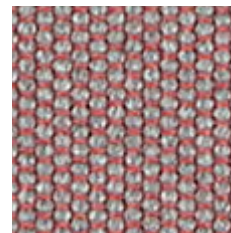




ZOR R060 140  
**STRAW**



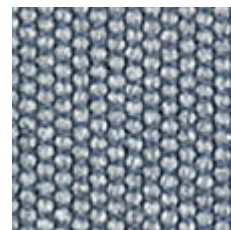
ZOR R070 140  
**MUSE**



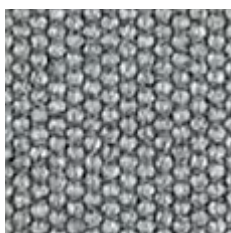
ZOR R063 140  
**HIBISCUS**



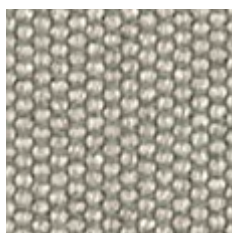
ZOR R061 140  
**GARI**



ZOR R068 140  
**NAMI**



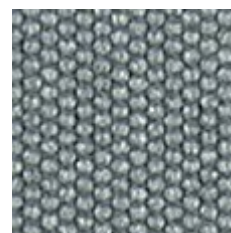
ZOR R067 140  
**GRAPHITE**



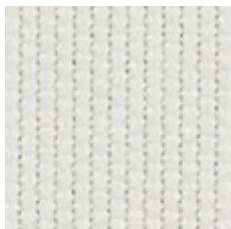
ZOR R059 140  
**MATCHA**



ZOR R062 140  
**SENTO**



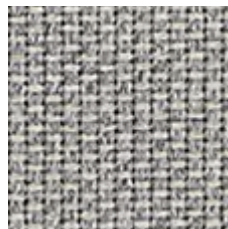
ZOR R069 140  
**MISO**



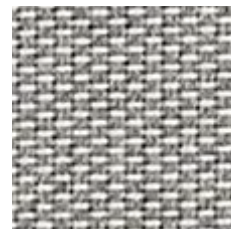
ZOR R057 140  
**RICE**



ZOR R058 140  
**WASHI**



ZOR R064 140  
**KIRI**



ZOR R066 140  
**SAKE**



ZOR R065 140  
**FUGU**

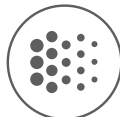


# Design

but not only...



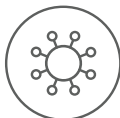
WATER & STAIN  
RESISTANT



UV/FADE  
RESISTANT



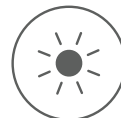
BLEACH  
CLEANABLE



MOLD/MILDEW  
RESISTANT



BREATHABLE  
COMFORT



SUN  
PROTECTION

[SUNBRELLA.COM](http://SUNBRELLA.COM)



# SUNBRELLA®

A BRAND THAT CARES  
ABOUT THE ENVIRONMENT

From production to use, Sunbrella® fabrics combine quality with durability to reduce their impact on the environment.



## PRODUCT LIFECYCLE MANAGEMENT

As part of its Renaissance program, Sunbrella® created the Heritage Renaissance line containing up to 50% recycled solution-dyed acrylic fibres.

Recycled fibres are sourced directly from production plants where waste is divided into colour groups and turned back into fibres. These fibres are then blended with the "virgin" Sunbrella® fibres.



## LESS WASTE

Our quality Sunbrella® fabrics do not rot or fade and are highly resistant over time. As our fabrics do not need to be replaced as often as traditional fabrics, they generate less waste.



## LOW WATER CONSUMPTION

In the solution-dyeing process, colour pigments are added to the yarn as it is spun, to guarantee colourfastness and save water. The small amount of water used in our weaving process is fully recycled in-house.

## ENVIRONMENTAL CERTIFICATIONS



### REACH REGULATION

Sunbrella® has developed treatments designed and applied in strict compliance with European REACH regulations.

REACH is a European regulation designed to improve the protection of human health and the environment from the risks posed by chemicals, while enhancing the competitiveness of the EU chemicals industry.



### GREENGUARD CERTIFIED

Sunbrella® upholstery fabric has achieved GREENGUARD GOLD Certification. Sunbrella® upholstery fabrics are certified by GREENGUARD as contributing to healthy indoor air by being a very low emitting interior product.



### OEKO-TEX LABEL

A quality that meets human-ecological requirements. Awarded with the OEKO-TEX label (class II - products with direct contact to the skin), Sunbrella® fabrics are produced without hazardous substances and do not pose a threat to health, the skin or the environment.



### QSEE CERTIFICATIONS

(Quality-Safety-Environment-Energy)  
ISO 9001, ISO 14001, ISO 45001 and ISO 50001

As part of our continuous improvement approach, and to better meet the needs of customers, our products are certified to international standards by Bureau Veritas Certification. These standards guarantee the consistent quality of our products, protect the ecosystem, improve energy performance and enhance the efficiency of our QSEE system.



### ZERO LANDFILL

For over 30 years, Sunbrella® has recycled its industrial wastes such as yarn and packaging. Today, every Sunbrella® manufacturing facility around the globe sends absolutely no waste to the landfill.



### 5 YEAR WARRANTY

Sunbrella® acrylic guarantees outstanding colourfastness.

Learn more at  
[sunbrella.com/sustainability](https://sunbrella.com/sustainability)









**DESIGN + PERFORMANCE™**

**SUNBRELLA.COM**

EDITION JANUARY 2020 - SAS DICKSON CONSTANT - CAPITAL 12.640.000 EUROS - 381 347 970 R.C.S. LILLE MÉTROPOLE  
PHOTOS : EDOUARD AUFRAY - SUNBRELLA DESIGN + PERFORMANCE™ IS A TRADEMARK AND SUNBRELLA® IS A REGISTERED TRADEMARK OF GLEN RAVEN, INC.



\*BAH PLE INT20\*