

2025

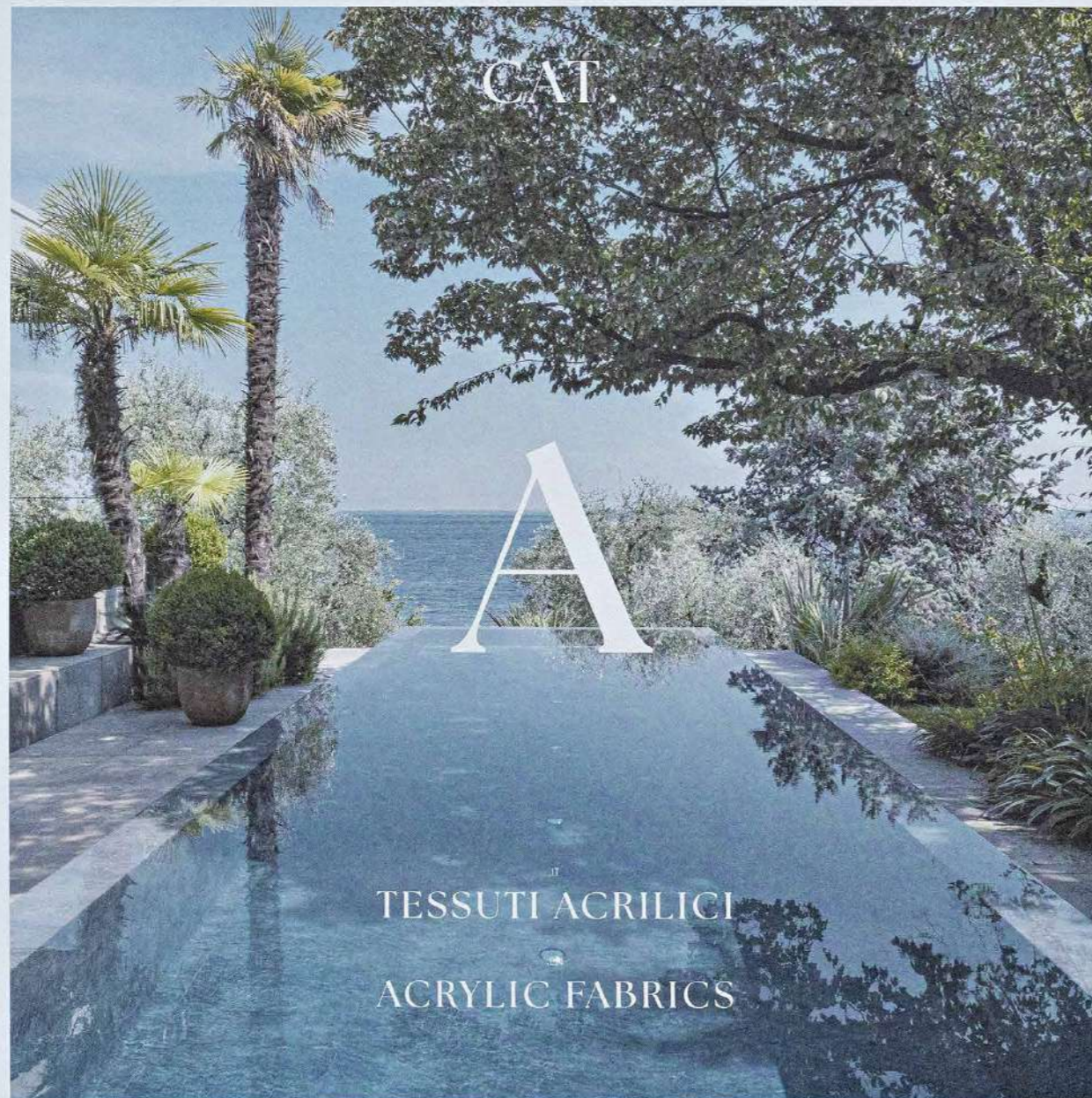
ATMOSPHERA

Outdoor Fabrics and Textiles Collection

2025

ATMOSPHERA

Outdoor Fabrics and Textiles Collection



ATMOSPHERA

CAT. A - Tessuti Acrilici Acrylic Fabrics

Schede Tecniche Tessuti - Fabric Data Sheets

3

Cat. A SJA

Composizione - Composition	100% Sunbrella Acrylic - Non PFAS
Finissaggio - Backing / Finish	Idrorepellente antimacchia Water-repellent & Stain-proof
Peso - Weight	260 g/m ²
Altezza - Width	137 cm
Solidità colori UV - esterno - 1000h Colour fastness UV - outdoor - 1000h	4/5

Utilizzi consigliati - Recommended Uses
Sedute portanti, cuscini da decoro, tende, pergole, ombrelloni
Seating, cushions, curtains, pergolas, umbrellas

QR Code

ISTRUZIONI DI LAVAGGIO - CARE

<< Scheda Tecnica Data Sheet

Cat. A NAT

Composizione - Composition	100% Sunbrella Acrylic - Non PFAS
Finissaggio - Backing / Finish	Idrorepellente antimacchia Water-repellent & Stain-proof
Peso - Weight	290 g/m ²
Altezza - Width	140 cm
Solidità colori UV - esterno - 1000h Colour fastness UV - outdoor - 1000h	4/5

Utilizzi consigliati - Recommended Uses
Sedute portanti, cuscini da decoro, tende
Seating, cushions, curtains

QR Code

ISTRUZIONI DI LAVAGGIO - CARE

<< Scheda Tecnica Data Sheet

Cat. A 15/151, 929, 926, 94/15, 727/15

Composizione - Composition	100% fibra acrilica outdoor tinta in massa 100% acrylic fibre outdoor solution dyed
Finissaggio - Backing / Finish	Idrorepellente con trattamento PFAS free Water-repellent with PFAS free finishing
Peso - Weight	270 g/m ²
Altezza - Width	152 cm
Solidità colori - Colour fastness	grado 4/5 dopo 1000 ore di esposizione scala dei grigi degree 4/5 after 1000 hour of exposure on the grey scale

Utilizzi consigliati - Recommended Uses
Sedute portanti, cuscini da decoro, tende
Seating, cushions, curtains

QR Code

ISTRUZIONI DI LAVAGGIO - CARE

<< Scheda Tecnica Data Sheet

Cat. A 1044/15, 1039/15, 1039/930, 1040/24, 1033/929

Composizione - Composition	100% fibra acrilica outdoor tinta in massa 100% acrylic fibre outdoor solution dyed
Finissaggio - Backing / Finish	Idrorepellente con trattamento PFAS free Water-repellent with PFAS free finishing
Peso - Weight	270 g/m ²
Altezza - Width	152 cm
Solidità colori - Colour fastness	grado 4/5 dopo 1000 ore di esposizione scala dei grigi degree 4/5 after 1000 hour of exposure on the grey scale

Utilizzi consigliati - Recommended Uses
Sedute portanti, cuscini da decoro, tende
Seating, cushions, curtains

QR Code

ISTRUZIONI DI LAVAGGIO - CARE

<< Scheda Tecnica Data Sheet

Cat. A 51377/710

Composizione - Composition	100% fibra acrilica outdoor tinta in massa 100% acrylic fibre outdoor solution dyed
Finissaggio - Backing / Finish	Idrorepellente con trattamento PFAS free Water-repellent with PFAS free finishing
Peso - Weight	280 g/m ²
Altezza - Width	145 cm
Solidità colori - Colour fastness	grado 4/5 dopo 1000 ore di esposizione scala dei grigi degree 4/5 after 1000 hour of exposure on the grey scale

Utilizzi consigliati - Recommended Uses
Sedute portanti, cuscini da decoro, tende
Seating, cushions, curtains

QR Code

ISTRUZIONI DI LAVAGGIO - CARE

<< Scheda Tecnica Data Sheet

- Idrorepellente
Water-repellent
- Ignifugo (vedi certificazioni e normative)
Flame retardant (see specific standards)
- Riciclato
Recycled

ATMOSPHERA

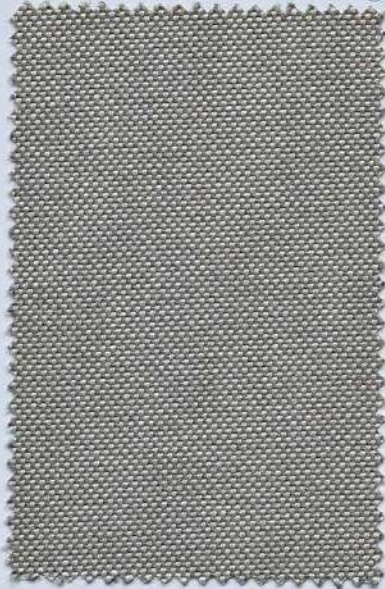
CAT. A - Tessuti Acrilici Acrylic Fabrics



CAT. A CA020 1044/15



CAT. A CA019 1039/15



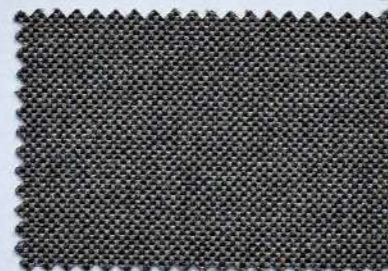
CAT. A CC102 NAT 10155 TAUPE CHALK



CAT. A CC101 NAT 10021 CANVAS



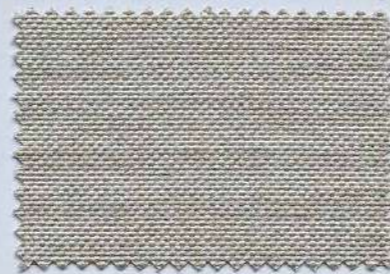
CAT. A CC103 NAT 10065 CARBON BEIGE



CAT. A CC234 NAT 10069 DARK TAUPE



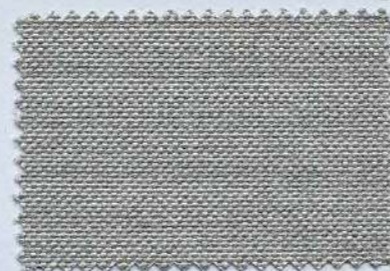
CAT. A CA029 15/151



CAT. A CC104 NAT 10151 LINEN CHALK



CAT. A CA076 SJA 3741 SILVER GREY



CAT. A CC238 NAT 10152 GRAUMEL CHALK



ATMOSPHERA

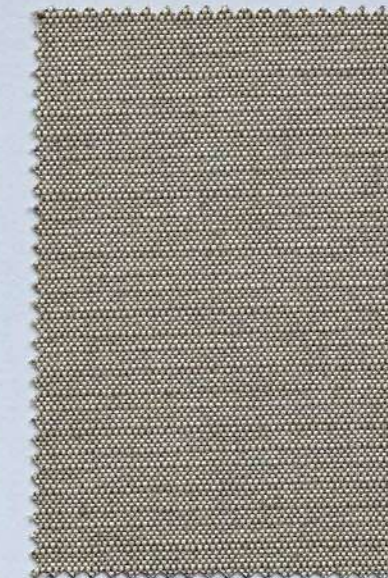
CAT. A - Tessuti Acilici Acrylic Fabrics



CAT. A CC231 NAT 10028 HEATHER BEIGE



CAT. A CC255 NAT P098 MANGO



CAT. A CA040 1039/930



CAT. A CC276 SJA 3996 WALNUT



CAT. A CC270 SJA 3127 MINK BROWN



CAT. A CC278 SJA P102 WADI

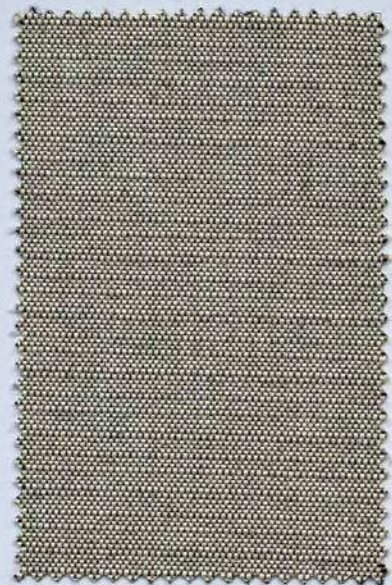


CAT. A CC274 SJA 3907 TAUPE CHINÉ

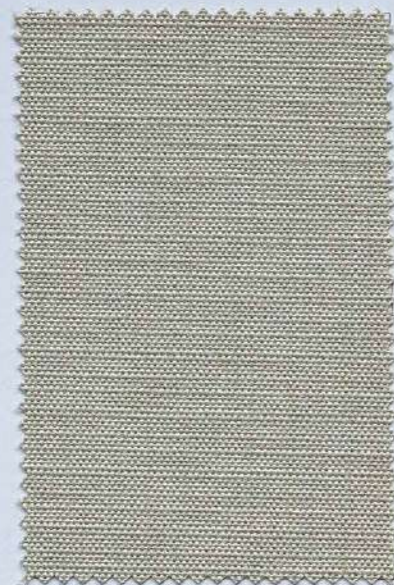


ATMOSPHERA

CAT. A - Tessuti Acilici Acrylic Fabrics



CAT. A CA041 1040/24



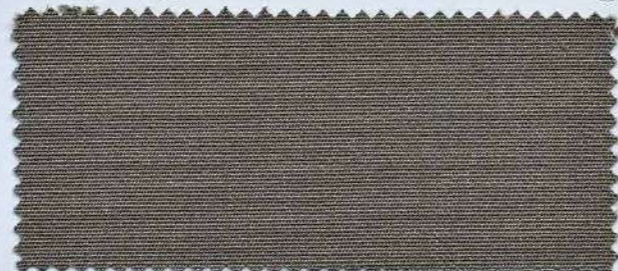
CAT. A CA018 1033/929



CAT. A CA077 929



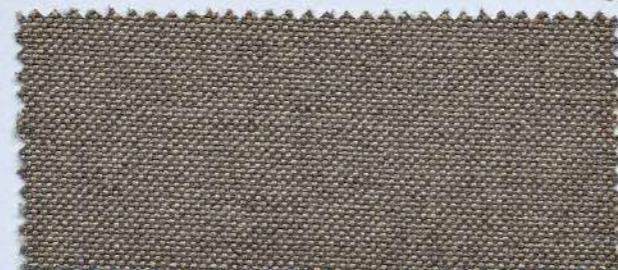
CAT. A CC278 SJA P106 CURCUMA



CAT. A CA005 926



CAT. A CC250 NAT 10250 SUNLIGHT



CAT. A CC232 NAT 10029 HEATHER GREY

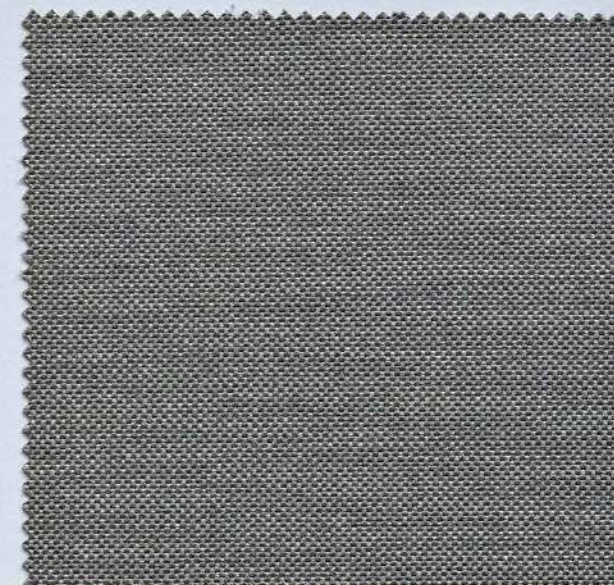


ATMOSPHERA

CAT. A - Tessuti Acrilici Acrylic Fabrics



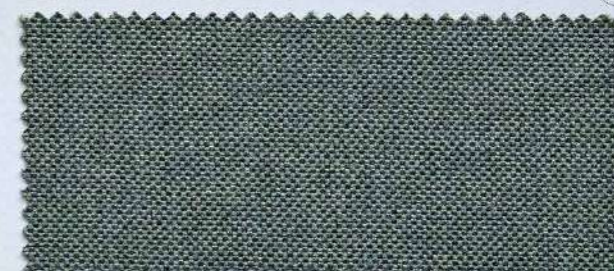
CAT. A CA072 SJA 3970 LICHEN



CAT. A CC233 NAT 10040 NATURE GREY



CAT. A CC277 SJA 3999 CALATHEA



CAT. A CC254 NAT P097 AGAVE



CAT. A CC237 NAT 10112 BAMBOO

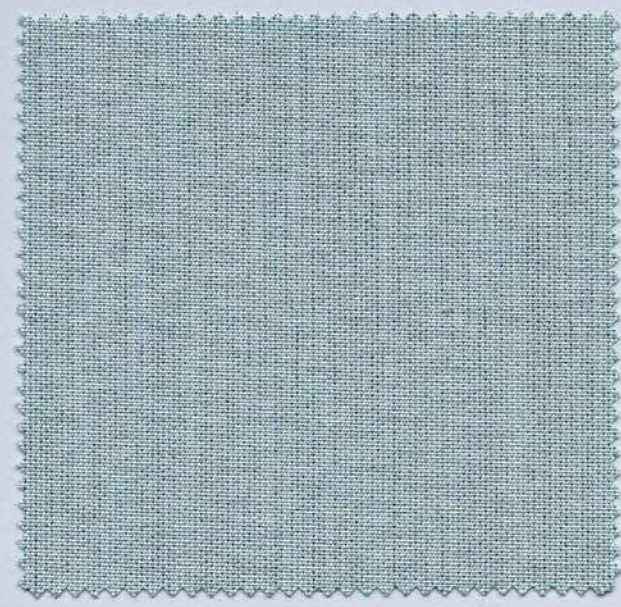


CAT. A CC236 NAT 10111 POSEDONIA

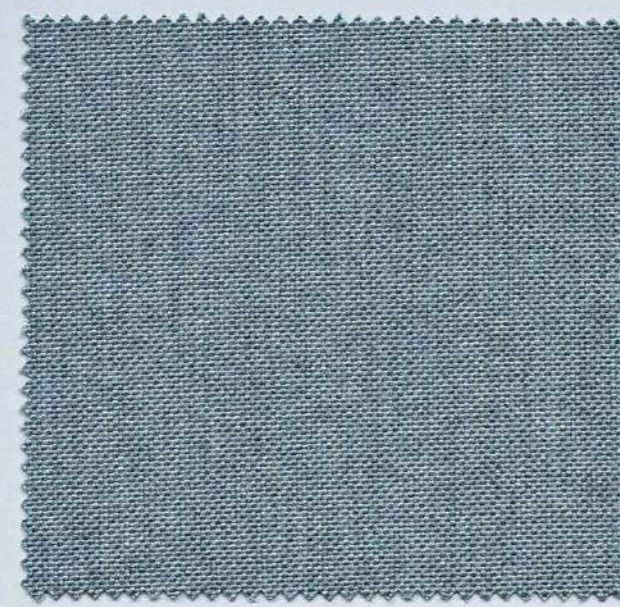


ATMOSPHERA

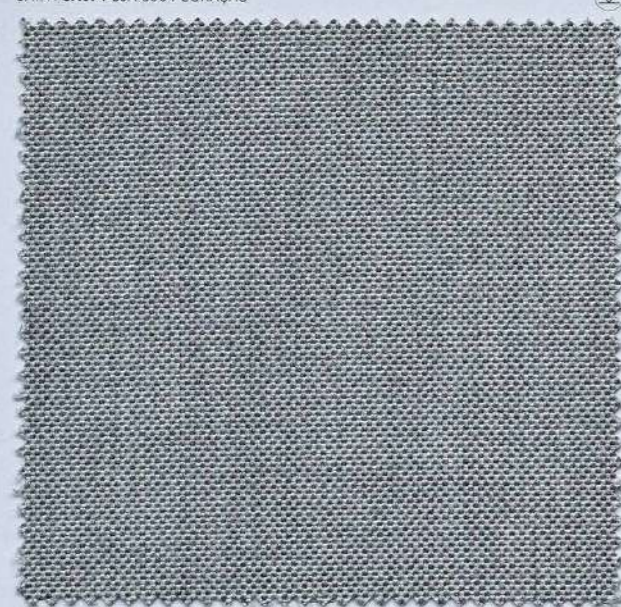
CAT. A - Tessuti Acrilici Acrylic Fabrics



CAT. A **CA074** SJA 3964 CURAÇAO



CAT. A **CC230** NAT 10025 FROSTY CHINE



CAT. A **CC253** NAT 10022 GREY CHINE



CAT. A **CC235** NAT 10064 CARBON SKY



CAT. A **CC275** SJA 3941 ADRIATIC



CAT. A **CA015** 727/15



CAT. A **CC272** SJA 3757 FLANELLE



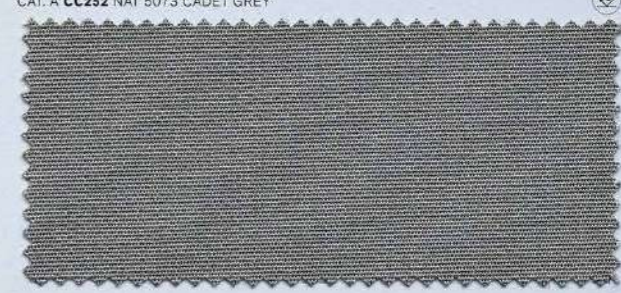
CAT. A **CC273** SJA 3758 SOOTY



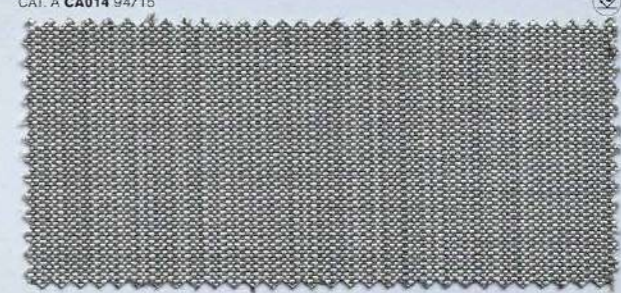
CAT. A **CC271** SJA 3706 SHINGLES



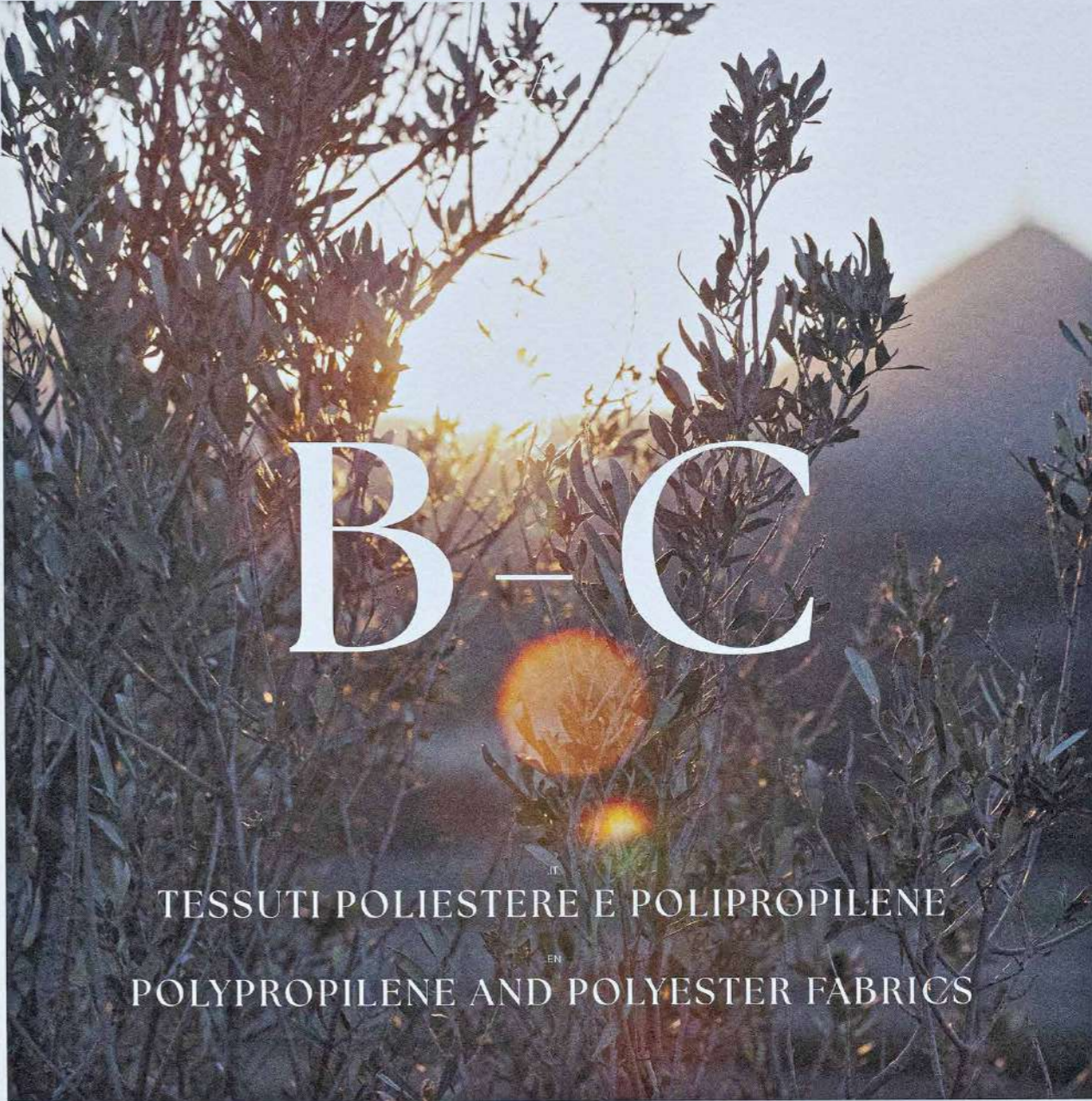
CAT. A **CC252** NAT 5073 CADET GREY



CAT. A **CA014** 94/15



CAT. A **CA022** 51377/710



B-C

IT
EN
TESSUTI POLIESTERE E POLIPROPILENE
POLYPROPYLENE AND POLYESTER FABRICS

ATMOSPHERA

CAT. B CAT. C - Tessuti Poliestere e Polipropilene / Polypropylene and Polyester Fabrics

Cat. C HERBIG

Composizione - Composition: 100% POLYPROPYLENE
 Peso - Weight: 960 (+/-5%) Gr./Mt
 Peso - Weight: 700 (+/-5%) Gr./MQ
 Altezza - Width: 140 cm
 Martindale: 35.000 cicli - cycles
 Solidità alla luce - Lightfastness: 7/8
 Cigarette Test: Pass

ISTRUZIONI DI LAVAGGIO - CARE

<< Scheda Tecnica Data Sheet

Cat. B NEW SANTANDER

Composizione - Composition: 100% POLYPROPYLENE
 Peso - Weight: 760 (+/-5%) Gr./Mt
 Peso - Weight: 545 (+/-5%) Gr./MQ
 Altezza - Width: 140 cm
 Martindale: 40.000 cicli - cycles
 Solidità alla luce - Lightfastness: 7/8
 Cigarette Test: Pass

ISTRUZIONI DI LAVAGGIO - CARE

<< Scheda Tecnica Data Sheet

Cat. B M STRIPE 201

Composizione - Composition: 92% FR POLYPROPYLENE - 8% FR POLYESTER
 Peso - Weight: 540 Gr./Mt
 Altezza - Width: 140 cm
 Martindale: 40.000 cicli - cycles
 FR Normative FR Standards: EN 1021 - 1 AND 1021 - 2 PASS ON FR FOAM CIGARETTE TEST: PASS IMO MSC 307(88) FTP PART 8 - UPHOLSTERY - PASS

ISTRUZIONI DI LAVAGGIO - CARE

<< Scheda Tecnica Data Sheet

Cat. B CASANOVA 1536

Composizione - Composition: 100% POLYPROPYLENE
 Peso - Weight: 630 (+/-4%) Gr./Mt
 Peso - Weight: 450 (+/-4%) Gr./MQ
 Altezza - Width: 140 cm
 Martindale: 65.000 cicli - cycles
 Luce - Artificial light: 7
 Resistenza al pilling - Pilling resistance: 4

ISTRUZIONI DI LAVAGGIO - CARE

<< Scheda Tecnica Data Sheet

Cat. C BLAZE

Composizione - Composition: 100% POLYPROPYLENE
 Peso - Weight: 1.080 (+/-5%) Gr./Mt
 Peso - Weight: 770 (+/-5%) Gr./MQ
 Altezza - Width: 140 cm
 Martindale: 40.000 cicli - cycles
 Solidità alla luce - Lightfastness: 7/8
 Cigarette Test: Pass

ISTRUZIONI DI LAVAGGIO - CARE

<< Scheda Tecnica Data Sheet

Cat. C MS 52

Composizione - Composition: 21% FR POLYPROPYLENE - 79% FR POLYESTER
 Peso - Weight: 500 Gr./Mt
 Altezza - Width: 138 cm
 Martindale: 40.000 cicli - cycles
 FR Normative FR Standards: EN 1021 - 1 AND 1021 - 2 PASS ON FR FOAM CIGARETTE TEST: PASS IMO MSC 307(88) FTP PART 8 - UPHOLSTERY - PASS

ISTRUZIONI DI LAVAGGIO - CARE

<< Scheda Tecnica Data Sheet

Cat. B F 9056

Composizione - Composition: 100% FR POLYPROPYLENE
 Peso - Weight: 370 Gr./Mt
 Altezza - Width: 140 cm
 Martindale: 35.000 cicli - cycles
 FR Normative FR Standards: UNI 8456 - 9174 - CLASS 1 - ITALIAN FIRE SAFETY CLASSIFICATION - PASS BS EN 1021-1: 1994 - SOURCE 0 - CIGARETTE TEST - PASS BS EN 1021-2: 1994 - SOURCE 1 - BUTANE FLAME - PASS ON FR FOAM TB 117 (2013) SECTION 1 POSITIVE B1 ACCORDING TO DIN 4102, PART 1 (MAY 1998)

ISTRUZIONI DI LAVAGGIO - CARE

<< Scheda Tecnica Data Sheet

Cat. B CASANOVA 1539

Composizione - Composition: 100% POLYPROPYLENE
 Peso - Weight: 810 (+/-4%) Gr./Mt
 Peso - Weight: 580 (+/-4%) Gr./MQ
 Altezza - Width: 140 cm
 Martindale: 40.000 cicli - cycles
 Luce - Artificial light: 7
 Resistenza al pilling - Pilling resistance: 4

ISTRUZIONI DI LAVAGGIO - CARE

<< Scheda Tecnica Data Sheet

Cat. C CAPUAL

Composizione - Composition: 99% POLYPROPYLENE, 1% SOLUTION DYED ACRILIC
 Peso - Weight: 890 (+/-5%) g/m
 Altezza - Width: 140 cm
 Martindale: 25.000 cicli - cycles
 CAL TB117: PASS
 Valutazione dell'inflammiabilità Assessment of ignitability: BS5852 source 0/EN1021-1:2006 (Cigaret test): PASS BS5852 source 1/EN1021-2:2006 (Match test): NOT PASS IMO MSC (67) ANEX 1 PART 8RESOLA652(16):1989 OEKO-TEX standard 100 class 1: PASS

ISTRUZIONI DI LAVAGGIO - CARE

<< Scheda Tecnica Data Sheet

Cat. C DELTA

Composizione - Composition: 80% POLYPROPYLENE 20% POLYESTER
 Peso - Weight: 826 (+/-5%) Gr./Mt
 Peso - Weight: 590 (+/-5%) Gr./MQ
 Altezza - Width: 138/140 cm
 Tessitura - Weaving: Jacquard
 Abrasione Martindale - Abrasion Martindale: 80.000 cicli - cycles
 Ignifugazione - Flammability: TB117-2013 / BS5852.0 (Cigarette)

ISTRUZIONI DI LAVAGGIO - CARE

<< Scheda Tecnica Data Sheet

Cat. C DHARMA BARRÉ 601

Composizione - Composition: 97% POLYPROPYLENE 3% POLYESTER OUTDOOR FR
 Peso - Weight: 990 (+/-5%) G./Mt
 Altezza - Width: 140 cm (+/-3%)
 Solidità alle intemperie - Test alla luce Colour fastness to weathering - Xenon test: ≥ 7
 Abrasione Martindale - Abrasion Martindale: ≥ 50.000 giri - rubs
 Reazione al fuoco - Fire Behavior: CALIFORNIA BULLETIN TB 117:2013: PASS

ISTRUZIONI DI LAVAGGIO - CARE

<< Scheda Tecnica Data Sheet

- Idrorepellente Water-repellent
- Ignifugo (vedi certificazioni e normative) Flame retardant (see specific standards)
- Riciclato Recycled

Cat. C OLD PANAMA O

Composizione - Composition: 98% POLYPROPYLENE, 2% SOLUTION DYED ACRILIC
 Peso - Weight: 850 (+/-5%) g/m
 Altezza - Width: 140 cm
 Martindale: 25.000 cicli - cycles
 CAL TB117: PASS
 Valutazione dell'inflammiabilità Assessment of ignitability: BS5852 source 0/EN1021-1:2006 (Cigaret test): PASS BS5852 source 1/EN1021-2:2006 (Match test): NOT PASS IMO MSC (67) ANEX 1 PART 8RESOLA652(16):1989 OEKO-TEX standard 100 class 1: PASS

ISTRUZIONI DI LAVAGGIO - CARE

<< Scheda Tecnica Data Sheet

Cat. C ALTAI

Composizione - Composition: 100% POLYPROPYLENE
 Peso - Weight: 728 (+/-5%) Gr./Mt
 Peso - Weight: 520 (+/-5%) Gr./MQ
 Altezza - Width: 138/140 cm
 Tessitura - Weaving: Jacquard
 Abrasione Martindale - Abrasion Martindale: 62.000 cicli - cycles
 Ignifugazione - Flammability: TB117-2013 / BS5852.0 (Cigarette)

ISTRUZIONI DI LAVAGGIO - CARE

<< Scheda Tecnica Data Sheet

Cat. C DHARMA BARRÉ 401

Composizione - Composition: 70% POLYPROPYLENE 30% POLYESTER OUTDOOR FR
 Peso - Weight: 740 (+/-5%) G./Mt
 Altezza - Width: 140 cm (+/-3%)
 Solidità alle intemperie - Test alla luce Colour fastness to weathering - Xenon test: ≥ 7
 Abrasione Martindale - Abrasion Martindale: ≥ 60.000 giri - rubs
 Reazione al fuoco - Fire Behavior: CALIFORNIA BULLETIN TB 117:2013: PASS

ISTRUZIONI DI LAVAGGIO - CARE

<< Scheda Tecnica Data Sheet

Cat. B REEF

Composizione - Composition: 67% POLYPROPYLENE, 33% POLYESTER
 Peso - Weight: 720 (+/-5%) G./M
 Altezza - Width: 140 cm
 Resistenza all'Abrasione (End Point) Abrasion Resistance Test (Martindale): ≥ 20.000
 Solidità del Colore alla Luce Artificiale Xenotest ISO 105 - B02 Xenotest ISO 105 - B04: ≥ 7 ≥ 4-5
 Riciclabile - Recyclable: 100%

ISTRUZIONI DI LAVAGGIO - CARE

<< Scheda Tecnica Data Sheet



CAT. B FO001 F 9055 COL. T38/1



CAT. B MA020 M STRIPE 201 COL. 38/1



CAT. C CC179 OLD PANAMA0 A4100



CAT. C CC181 CAPUAL A4200



CAT. B RE001 REEF 0100



CAT. B FO002 F 9055 COL. T0/1



CAT. B RE003 REEF 0007



CAT. B CB025 CASANOVA 1539 COL. 07



CAT. B RE002 REEF 0025



CAT. C CC300 DELTA 03



CAT. B FO003 F 9056 COL. T79/2



CAT. B MA021 M STRIPE 201 COL. T79/1



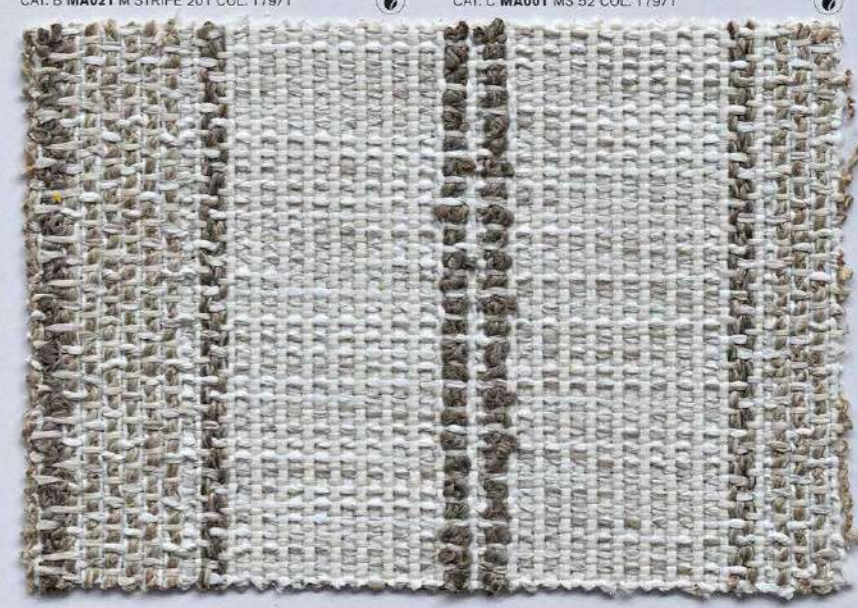
CAT. C MA001 MS 52 COL. T79/1



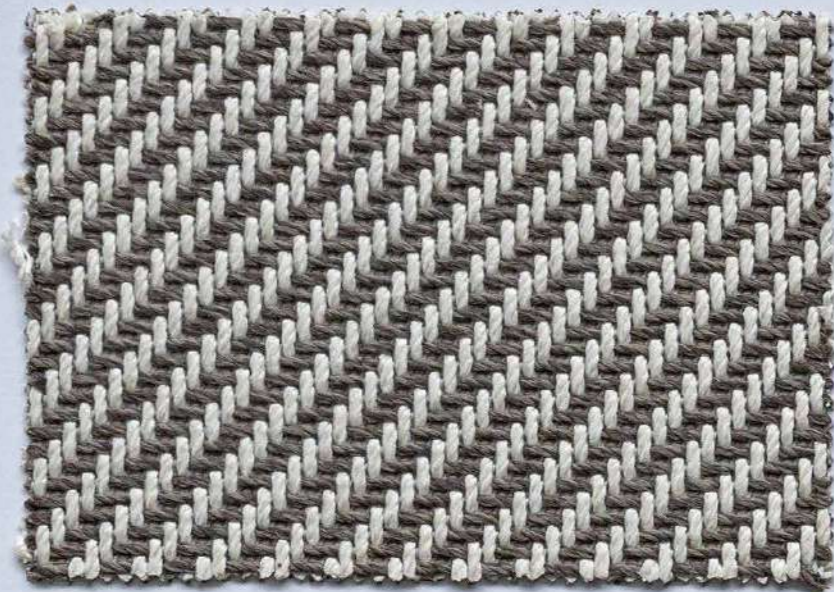
CAT. C CC182 OLD PANAMA0 A4101



CAT. C CC180 CAPUAL A4201



CAT. C DH100 DHARMA BARRÉ 601



CAT. C HE001 HERBIG 33



CAT. C BL001 BLAZE 04



CAT. C CC307 DELTA 01



CAT. B NE001 NEW SANTANDER 06



CAT. C CC306 DELTA 90

ATMOSPHERA

CAT. B CAT. C - Tessuti Poliestere e Polipropilene Polypropilene and Polyester Fabrics



CAT. C CC302 DELTA 45



CAT. C CC303 DELTA 01/1



CAT. C MA003 MS 52 COL. T0/1



CAT. C CC301 DELTA 02



CAT. C DH001 DHARMA BARRE 401



CAT. C MA002 MS 52 COL. T101/4



CAT. C BL002 BLAZE 09



CAT. B NE002 NEW SANTANDER 05



CAT. C HE002 HERBIG 31

ATMOSPHERA

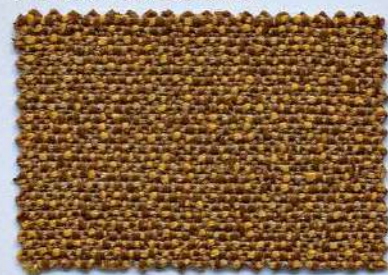
CAT. B CAT. C - Tessuti Poliestere e Polipropilene Polypropilene and Polyester Fabrics



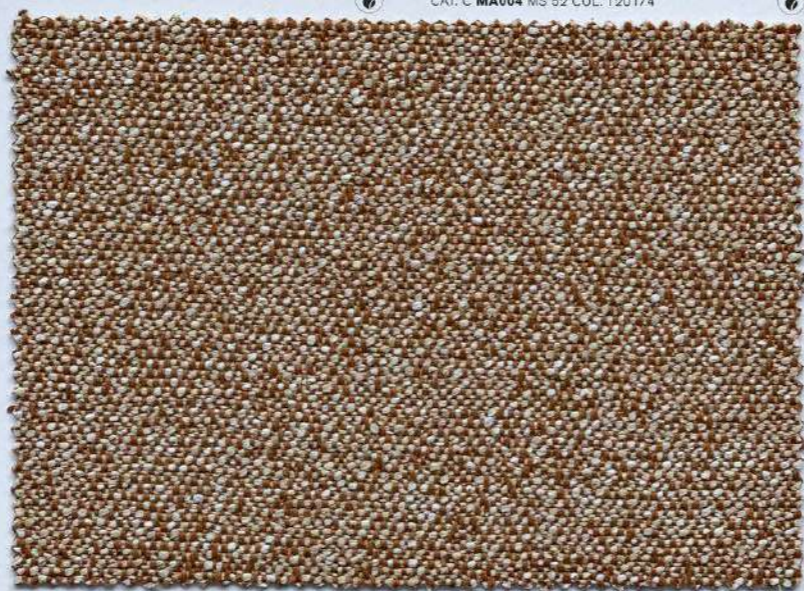
CAT. B MA022 M STRIPE 201 COL. 23/7



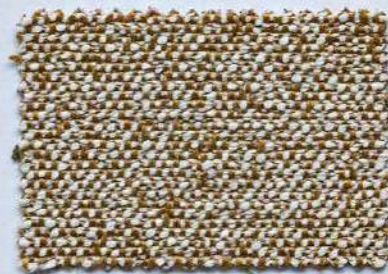
CAT. C MA004 MS 52 COL. T20 1/4



CAT. C CC202 ALTAI 12/15



CAT. C CC203 ALTAI 16/4



CAT. C CC204 ALTAI 12/5

ATMOSPHERA

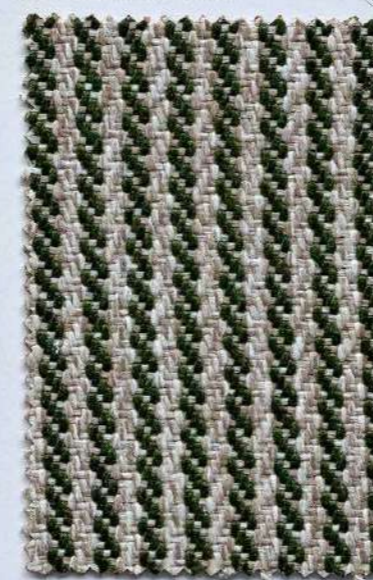
CAT. B CAT. C - Tessuti Poliestere e Polipropilene Polypropylene and Polyester Fabrics



CAT. C MA005 MS 52 COL. T17/3



CAT. B MA023 M STRIPE 201 COL. 23/1



CAT. B CB022 CASANOVA 1539 COL. 11



CAT. B CB031 CASANOVA 1536 COL. 11



CAT. B F0004 F 9056 COL. T50/1

ATMOSPHERA

CAT. B CAT. C - Tessuti Poliestere e Polipropilene Polypropylene and Polyester Fabrics



CAT. C **CC183** OLD PANAMA A4104



CAT. C **CC184** OLD PANAMA A4105



CAT. C **CC305** DELTA 01/5



CAT. C **BL003** BLAZE 03



CAT. B **NE003** NEW SANTANDER 11



CAT. C **HE003** HERBIG 30

ATMOSPHERA

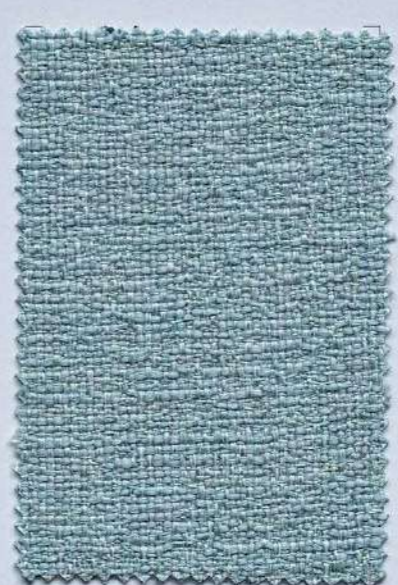
CAT. B CAT. C : Tessuti Poliestere e Polipropilene Polypropylene and Polyester Fabrics



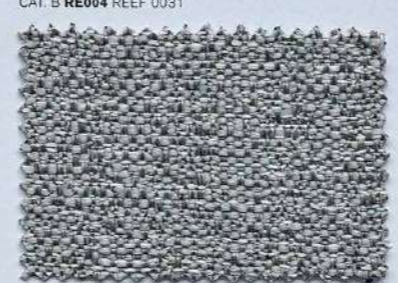
CAT. B **FO006** F 9056 COL. T39/1



CAT. B **RE004** REEF 0031



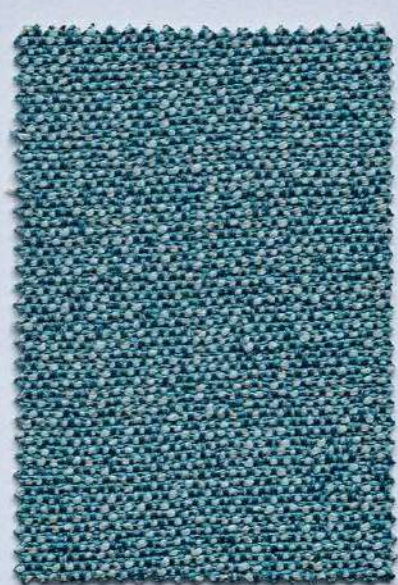
CAT. B **FO005** F 9056 COL. T85/3



CAT. B **FO007** F 9056 COL. T29/1



CAT. C **CC177** CAPUAL A4209



CAT. C **CC201** ALTAI 21/25



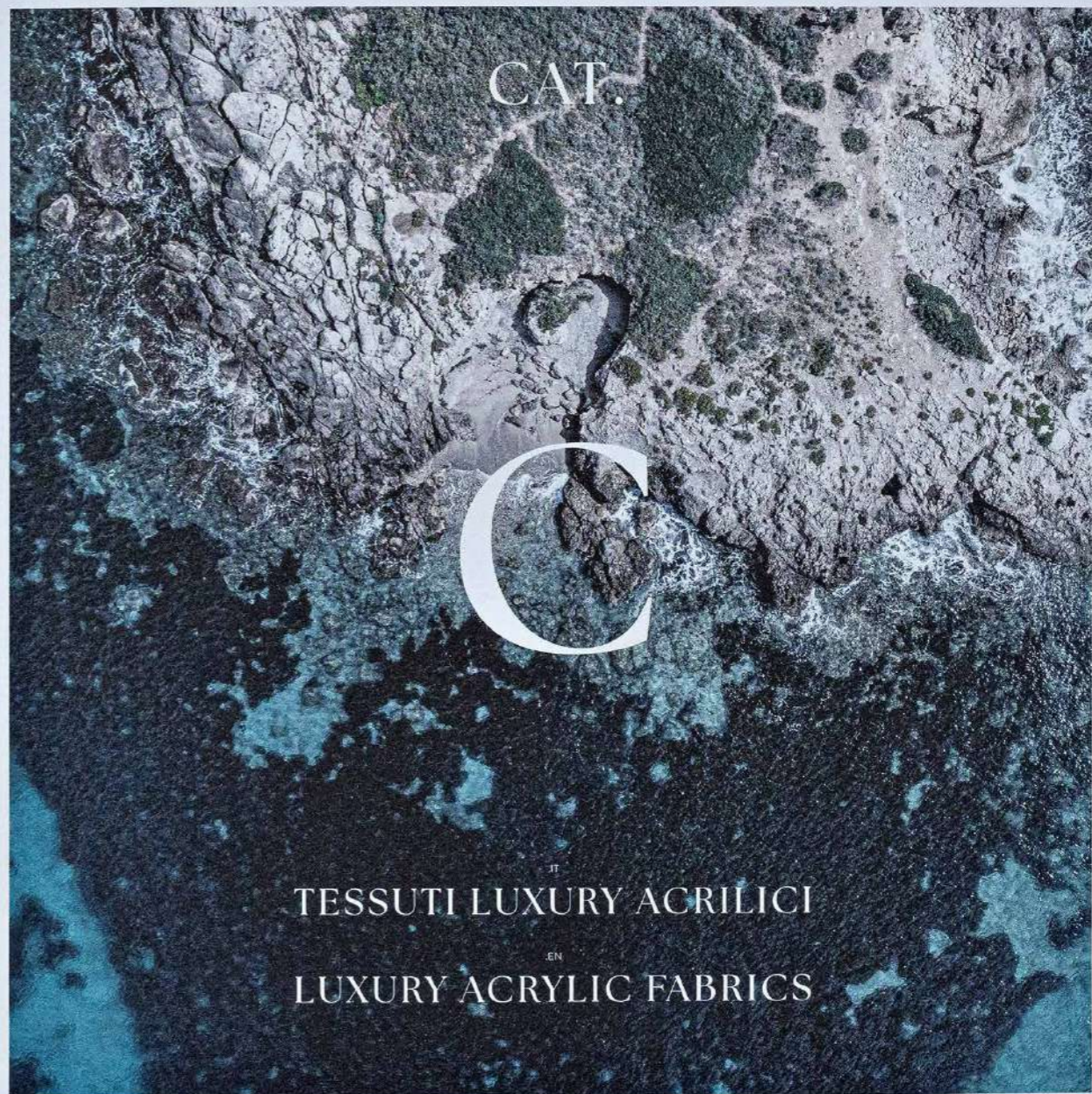
CAT. C **CC178** OLD PANAMA A4109



CAT. B **MA024** M STRIPE 201 COL. 39/4

ATMOSPHERA

CAT. B CAT. C : Tessuti Poliestere e Polipropilene Polypropylene and Polyester Fabrics



CAT.

C

IT
TESSUTI LUXURY ACRILICI

EN
LUXURY ACRYLIC FABRICS

ATMOSPHERA

CAT. C. - Tessuti Luxury Acrilici - Luxury Acrylic Fabrics

Cat. C ERFOUD

Composizione - Composition: 100% solution-dyed acrylic
 Peso - Weight: 630 gr/m
 Altezza - Width: 140 cm
 Martindale: 50.000 cicli - cycles
 Solidità alla luce - Light fastness: 7/8

Performance: Utilizzo interno ed esterno, idrorepellente, antimacchia, antimuffa, traspirante, lavabile con candeggina, elevata resistenza all'abrasione, colori resistenti alla luce, antiscolorimento.
 In-outdoor use, water repellent, stain resistant, mould resistant, breathable, bleach cleanable, high abrasion resistant, colour fast to light, fade proof.


Utilizzi consigliati - Recommended Uses:  << Scheda Tecnica Data Sheet


ISTRUZIONI DI LAVAGGIO - CARE: 

Cat. C FALESIA

Composizione - Composition: 100% solution-dyed acrylic
 Peso - Weight: 930 gr/m
 Altezza - Width: 138 cm
 Martindale: 50.000 cicli - cycles
 Solidità alla luce - Light fastness: 7/8

Performance: Utilizzo interno ed esterno, idrorepellente, antimacchia, antimuffa, traspirante, lavabile con candeggina, elevata resistenza all'abrasione, colori resistenti alla luce, antiscolorimento.
 In-outdoor use, water repellent, stain resistant, mould resistant, breathable, bleach cleanable, high abrasion resistant, colour fast to light, fade proof.

Utilizzi consigliati - Recommended Uses:  << Scheda Tecnica Data Sheet

ISTRUZIONI DI LAVAGGIO - CARE: 

Cat. C KOLYMBETRA

Composizione - Composition: 100% solution-dyed acrylic
 Peso - Weight: 850 gr/m
 Altezza - Width: 140 cm
 Martindale: 20.000 cicli - cycles
 Solidità alla luce - Light fastness: 7/8

Performance: Utilizzo interno ed esterno, idrorepellente, antimacchia, antimuffa, traspirante, lavabile con candeggina, elevata resistenza all'abrasione, colori resistenti alla luce, antiscolorimento.
 In-outdoor use, water repellent, stain resistant, mould resistant, breathable, bleach cleanable, high abrasion resistant, colour fast to light, fade proof.

Utilizzi consigliati - Recommended Uses:  << Scheda Tecnica Data Sheet

ISTRUZIONI DI LAVAGGIO - CARE: 

Cat. C ONDA

Composizione - Composition: 100% solution-dyed acrylic
 Peso - Weight: 880 gr/m
 Altezza - Width: 136 cm
 Martindale: 85.000 cicli - cycles
 Solidità alla luce - Light fastness: 7/8

Performance: Utilizzo interno ed esterno, idrorepellente, antimacchia, antimuffa, traspirante, lavabile con candeggina, elevata resistenza all'abrasione, colori resistenti alla luce, antiscolorimento.
 In-outdoor use, water repellent, stain resistant, mould resistant, breathable, bleach cleanable, high abrasion resistant, colour fast to light, fade proof.


Utilizzi consigliati - Recommended Uses:  << Scheda Tecnica Data Sheet


ISTRUZIONI DI LAVAGGIO - CARE: 

Cat. C SPUGNA

Composizione - Composition: 100% solution-dyed acrylic
 Peso - Weight: 1380 gr/m
 Altezza - Width: 140 cm
 Martindale: 50.000 cicli - cycles
 Solidità alla luce - Light fastness: 7/8

Performance: Utilizzo interno ed esterno, idrorepellente, antimacchia, antimuffa, traspirante, lavabile con candeggina, elevata resistenza all'abrasione, colori resistenti alla luce, antiscolorimento.
 In-outdoor use, water repellent, stain resistant, mould resistant, breathable, bleach cleanable, high abrasion resistant, colour fast to light, fade proof.


Utilizzi consigliati - Recommended Uses:  << Scheda Tecnica Data Sheet


ISTRUZIONI DI LAVAGGIO - CARE: 




Cat. C ZAGORA

Composizione - Composition: 100% solution-dyed acrylic
 Peso - Weight: 930 gr/m
 Altezza - Width: 140 cm
 Martindale: 50.000 cicli - cycles
 Solidità alla luce - Light fastness: 7/8

Performance: Utilizzo interno ed esterno, idrorepellente, antimacchia, antimuffa, traspirante, lavabile con candeggina, elevata resistenza all'abrasione, colori resistenti alla luce, antiscolorimento.
 In-outdoor use, water repellent, stain resistant, mould resistant, breathable, bleach cleanable, high abrasion resistant, colour fast to light, fade proof.

Utilizzi consigliati - Recommended Uses:  << Scheda Tecnica Data Sheet


ISTRUZIONI DI LAVAGGIO - CARE: 


-  Idrorepellente / Water-repellent
-  Ignifugo (vedi certificazioni e normative) / Flame retardant (see specific standards)
-  Riciclato / Recycled

Cat. C LOP

Composizione - Composition: 100% Sunbrella Acrilic - Non PFAS
 Finitaggio - Backing / Finish: Idrorepellente antimacchia / Water-repellent & Stain-proof
 Peso - Weight: 680 g/m²
 Altezza - Width: 140 cm
 Solidità colori agli UV - esterno - 1000h / Colour fastness UV - outdoor - 1000h

Utilizzi consigliati - Recommended Uses: Sedute portanti, cuscini da decoro / Seating, cushions


Utilizzi consigliati - Recommended Uses:  << Scheda Tecnica Data Sheet


ISTRUZIONI DI LAVAGGIO - CARE: 

Cat. C HER

Composizione - Composition: 50% Riciclato Sunbrella Acrilico, 47% Sunbrella Acrilico, 3% Poliestere / 50% Recycled Sunbrella Acrylic, 47% Sunbrella Acrylic, 3% Polyester
 Finitaggio - Backing / Finish: Non PFAS - Idrorepellente antimacchia / Water-repellent & Stain-proof
 Peso - Weight: 335 g/m²
 Altezza - Width: 140 cm
 Solidità colori agli UV - esterno - 1000h / Colour fastness UV - outdoor - 1000h

Utilizzi consigliati - Recommended Uses: Sedute portanti, cuscini da decoro / Seating, cushions


Utilizzi consigliati - Recommended Uses:  << Scheda Tecnica Data Sheet


ISTRUZIONI DI LAVAGGIO - CARE: 




Cat. C SLO

Composizione - Composition: 83% Riciclato Sunbrella Acrilico, 65% Sunbrella Acrilico, 2% Poliestere / 83% Recycled Sunbrella Acrylic, 65% Sunbrella Acrylic, 2% Polyester
 Finitaggio - Backing / Finish: Non PFAS - Idrorepellente antimacchia / Water-repellent & Stain-proof
 Peso - Weight: 470 g/m²
 Altezza - Width: 140 cm
 Solidità colori agli UV - esterno - 1000h / Colour fastness UV - outdoor - 1000h

Utilizzi consigliati - Recommended Uses: Sedute portanti, cuscini da decoro / Seating, cushions

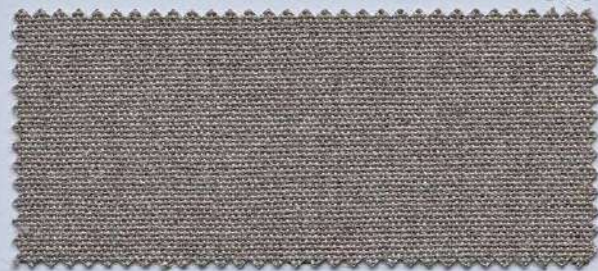
Utilizzi consigliati - Recommended Uses:  << Scheda Tecnica Data Sheet

ISTRUZIONI DI LAVAGGIO - CARE: 

-  Idrorepellente / Water-repellent
-  Ignifugo (vedi certificazioni e normative) / Flame retardant (see specific standards)
-  Riciclato / Recycled



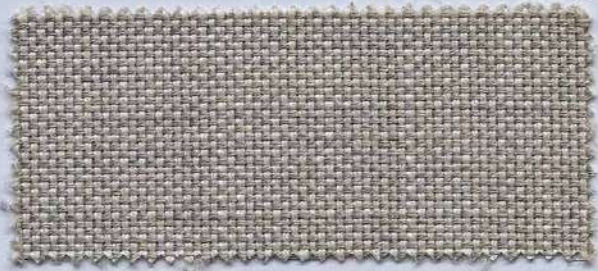
CAT. C **CC081** HER 18006 PAPYRUS



CAT. C **CC080** HER 18001 ASH



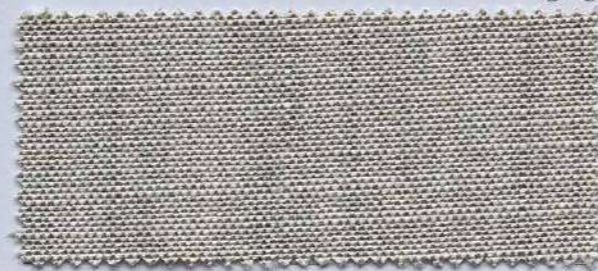
CAT. C **CC128** ZAGORA 9315



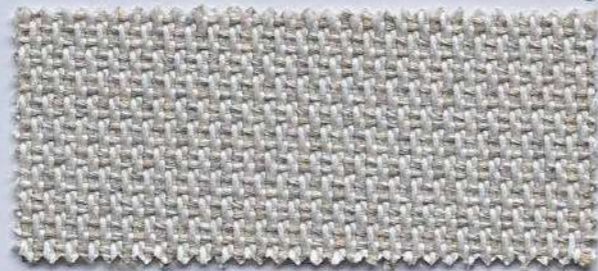
CAT. C **CC129** ZAGORA 93102



CAT. C **CC256** SLO 19101 FARAFRA



CAT. C **CC120** ERFOUD 10215



CAT. C **CC220** LOP R018 MARBLE



CAT. C **CC221** LOP R033 SNOW



CAT. C **CC140** SPUGNA 20



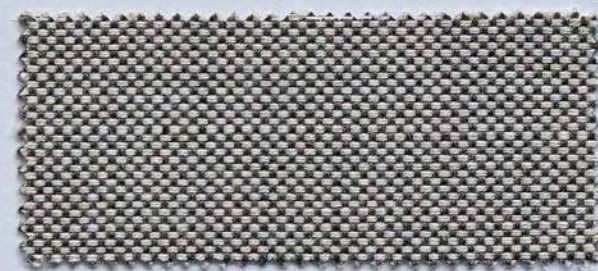
CAT. C **ON001** ONDA 20



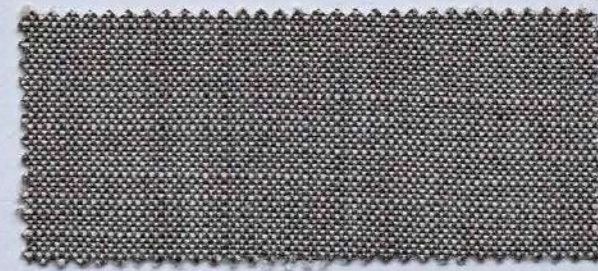
CAT. C **FA001** FALESIA 20



CAT. C **K0001** KOLYMBETRA 20

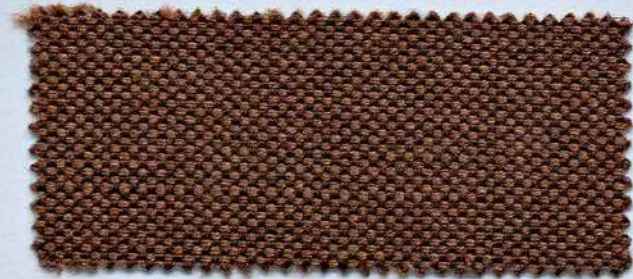


CAT. C **CC135** ZAGORA 92693



CAT. C **CC123** ERFOUD 92693





CAT. C **CC136** ZAGORA 62



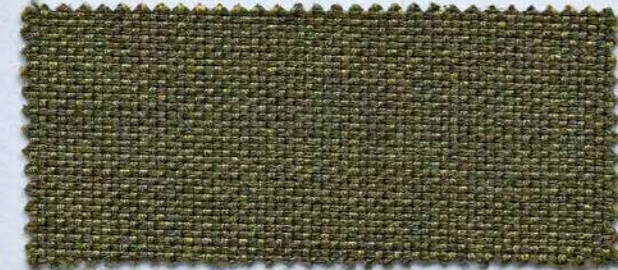
CAT. C **CC195** ERFOUD 18062



CAT. C **CC190** ERFOUD 62



CAT. C **CC147** ZAGORA 181



CAT. C **CC138** ZAGORA 74



CAT. C **CC193** ERFOUD 18174



CAT. C **CC192** ERFOUD 74



ATMOSPHERA

CAT. C - Tessuti Luxury Acrilici Luxury Acrylic Fabrics



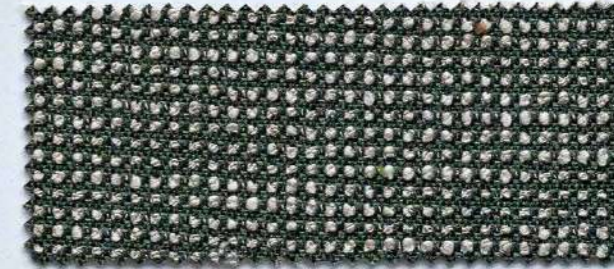
CAT. C **CC258** SLO 19107 SPIREA



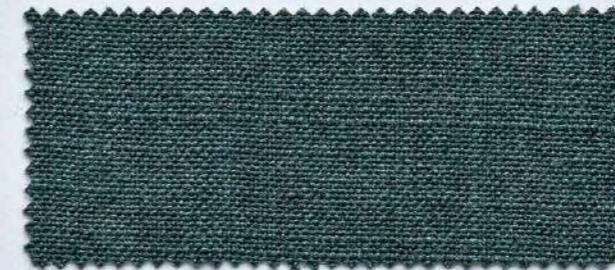
CAT. C **CC060** HER 18011 LEAF



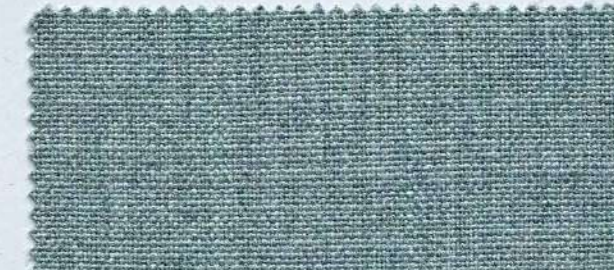
CAT. C **CC114** HER 18012 MOSS



CAT. C **CC257** SLO 19106 FERN



CAT. C **CC096** ERFOUD 71



CAT. C **CC095** ERFOUD 80



CAT. C **CC097** ZAGORA 8271



ATMOSPHERA

CAT. C - Tessuti Luxury Acrilici Luxury Acrylic Fabrics



CAT. C **CC139** ZAGORA 82



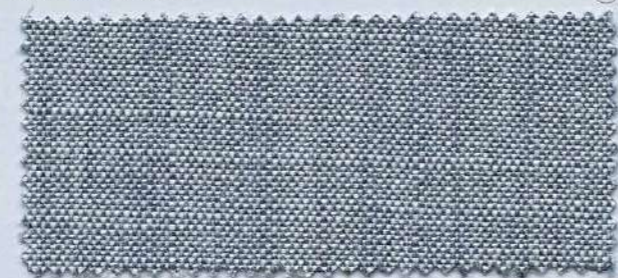
CAT. C **ON002** ONDA 80



CAT. C **CC194** ERFOUD 7587



CAT. C **CC050** ERFOUD 87



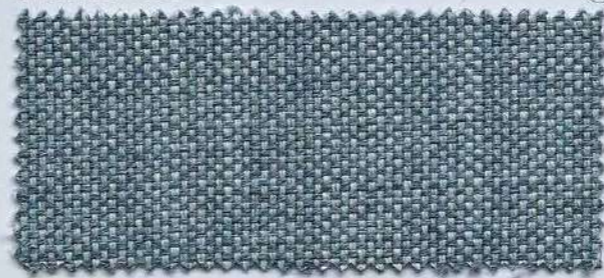
CAT. C **CC049** ERFOUD 8715

ATMOSPHERA

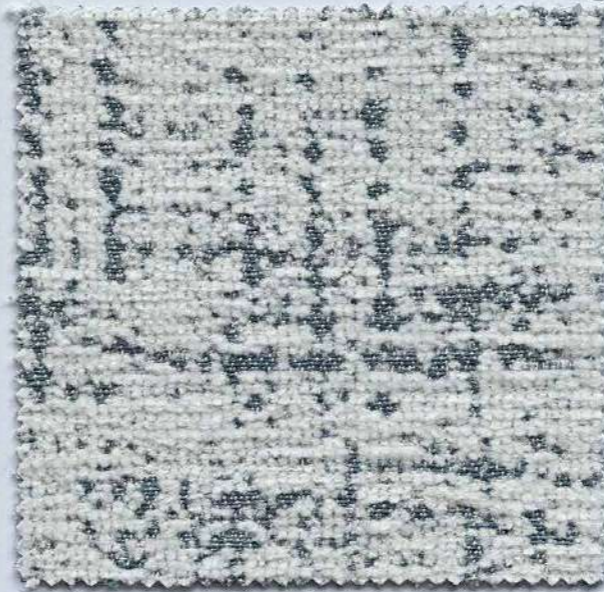
CAT. C : Tessuti Luxury Acrilici *Luxury Acrylic Fabrics*



CAT. C **CC122** ERFOUD 81



CAT. C **CC125** ZAGORA 8281



CAT. C **FA002** FALESIA 81

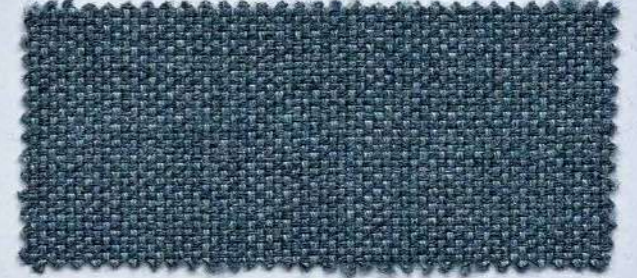
ATMOSPHERA



CAT. C **KO002** KOLYMBETRA 80

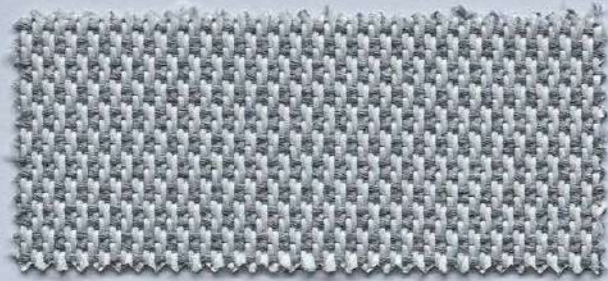


CAT. C **CC142** SPUGNA 81

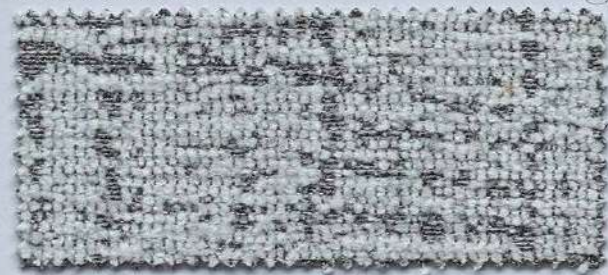


CAT. C **CC145** ZAGORA 8183

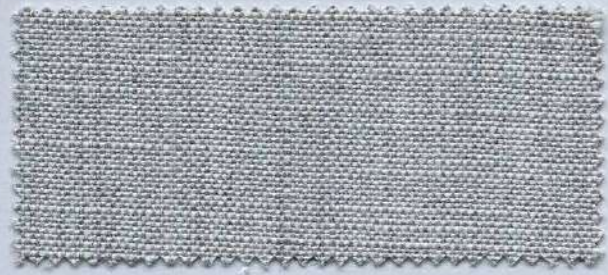
CAT. C : Tessuti Luxury Acrilici *Luxury Acrylic Fabrics*



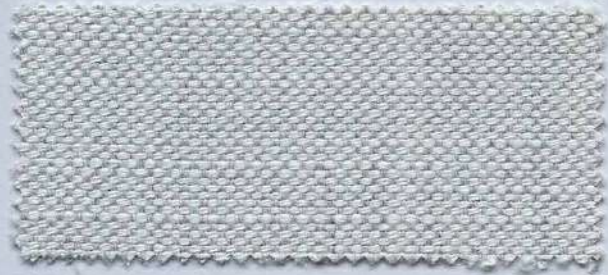
CAT. C **CC222** LOP R043 ASH



CAT. C **FA003** FALESIA 171



CAT. C **CC079** ERFUOD 7915



CAT. C **CC146** ZAGORA 2010



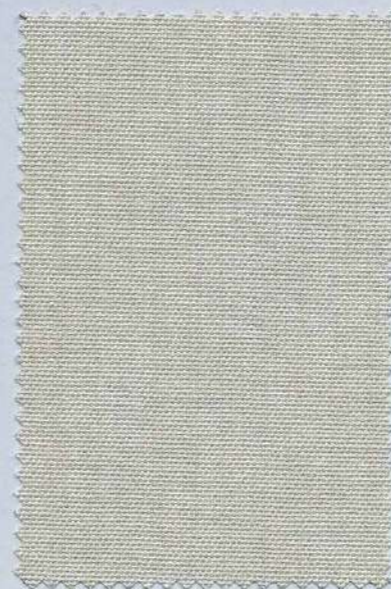
CAT. C **CC141** SPUGNA 170



CAT. C **ON003** ONDA 170

CAT. C - Tessuti Luxury Acrilici Luxury Acrylic Fabrics

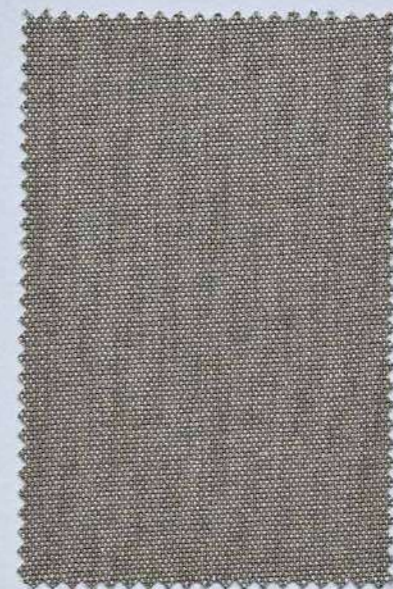
ATMOSPHERA



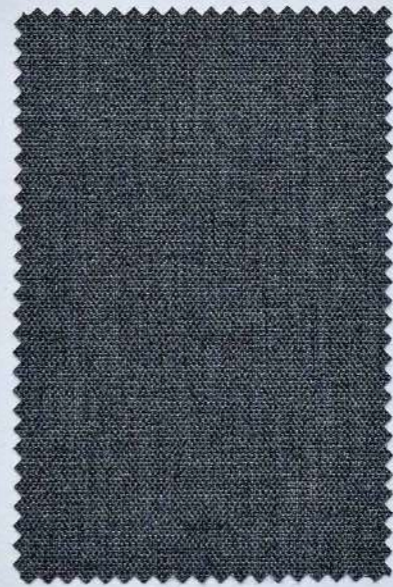
CAT. A **CE005** 15/151



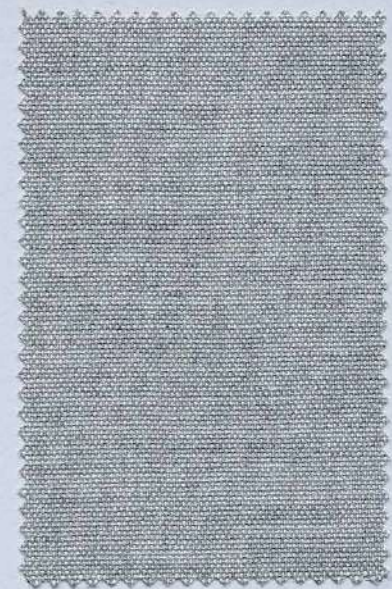
COVER **TDC 01**



CAT. A **CE003** 929/926



COVER **TDC 02**



CAT. A **CE001** 15/727

ETAMINE
Tenda Curtain
CAT. A **CE005** 15/151

ETAMINE
Tenda Curtain
CAT. A **CE003** 929/926

ETAMINE
Tenda Curtain
CAT. A **CE001** 15/727

Telo di copertura
Cover
COVER **TDC 01**

Telo di copertura
Cover
COVER **TDC 02**

Scheda Tecnica
Data Sheet



Scheda Tecnica
Data Sheet



ATMOSPHERA

