

DEN
OUTDOOR



SAMUELE MAZZA OUTDOOR COLLECTION
Materials and Finishes Maintenance



Synthetic Resin

Materials and Finishes Maintenance

Synthetic Resin



White



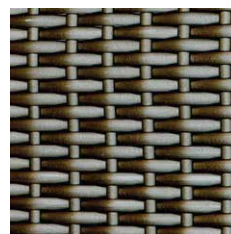
Ivory



Brown



Black



Grey Olive



Bronze

The synthetic rattan that we use is a fiber made of HDPE High Density Polyethylene with the following features:

- UV and weather resistant
- Environmental friendly
- Washable and durable
- 100% recyclable
- Non-fading
- Easy maintenance
- High tensile strength
- Non-toxic

Standard maintenance:

To clean, use a soft cloth / brush with water and, if necessary, a neutral detergent.

Do not use solvents or alkaline detergents which could damage the strings. Avoid chemical detergents, aggressive solvents, rigid brushes and high pressure water, this in order not to deteriorate the surface of the rope itself.

Never scrape the surface.

Remove the dirt on the surface by washing with water, use non-aggressive detergent products with the help of sponges and / or soft rags.

Rinse thoroughly until all detergent or soap residues are completely eliminated. If the dirt persists, repeat the operation.

Cleaning tips:

- Spray Cleaner (Chanteclair or similar) on the surface and let cleaning solution sit 1 minute.
- Brush the surface repeatedly in a circular motion using a soft bristle brush.
- Flush with plenty of water, as it is very important to avoid residue drying on surface. Wipe with a dry cloth.



Rattan - Wicker - Rawhide

Materials and Finishes Maintenance

Rattan - Wicker - Rawhide



Rattan



Wicker



Rawhide

Rattan and wicker: Vegetal fibers.

Rattan is obtained from the thin and flexible stem of some climbing palms widespread in tropical and sub-tropical areas.

The wicker is obtained from the innermost part of the rattan.

Rawhide: It is obtained from untanned animal skin and is composed of collagen.

Standard maintenance:

For cleaning, we recommend dusting with a soft brush and, if necessary, a cloth dampened with water. Alcohol or solvents of any kind are not recommended as they can damage the surface.

To preserve the durability of these natural materials avoid exposure to direct sun and rain.

Keep your indoor natural wicker furniture cleaned regularly. Use a vacuum cleaner with a brush attachment to regularly clean the dust out from between the weave. Dirt that builds up in the weave can become very difficult to remove if left go for long periods of time. So, if your home tends to have high dust or dirt in the air or on your clothes, you should be sweeping your furniture at least every few months. Doing so will ensure that the finish stays clear of dirt and grime.

When your natural wicker furniture becomes dirty and will not clean up with regular vacuuming, you need to get a little more serious about your cleaning method. It's time to break out the cleaning tools and products that clean the dirt off, but leave the natural wicker unmarred from the cleaning process.

To spot clean, you will need an old tooth brush and follow these steps:

- Use a small container about the size of a 12 oz. soup can. Add a few drops of dish soap into the container and dilute it by filling the container about half way with hot or warm tap water.
- Dampen the tooth brush with the diluted solutions and spot scrub your wicker.
- After cleaning the spot with the brush, wipe up the residual soap on the spot using an old wash cloth with cold water until the excess water is removed.
- Wiping and rinsing several times will nicely remove any soapy residue, but leave the natural wicker damp.
- Allow the damp wicker to thoroughly dry. This may take several hours depending on how much water is absorbed into the natural wicker fibers and the humidity in the air. Direct sunshine and high air flow will speed up the drying process.



Steel

Plain paints / Embossed paints / Special paints

Materials and Finishes Maintenance

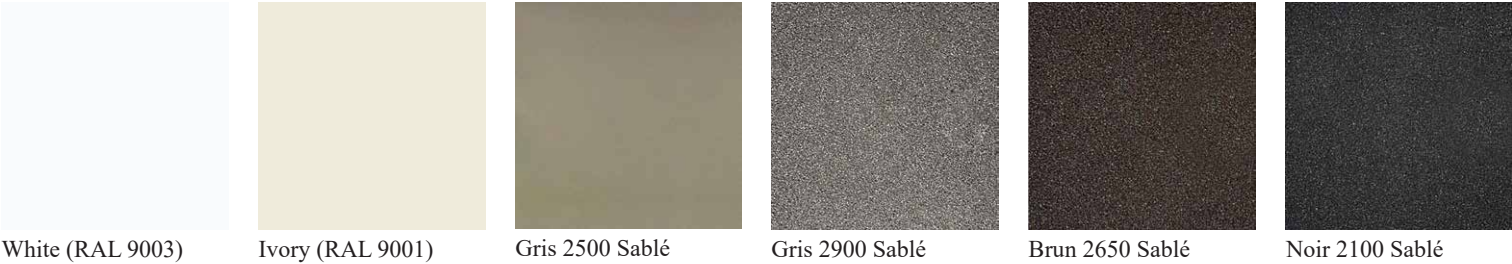
Steel - Plain paints / Embossed paints / Special paints



PLAIN PAINTS



EMBOSSSED PAINTS



SPECIAL PLAIN PAINTS



Maintenance of painted iron furniture products

Our products made of iron undergo special processing and painting cycles to make them suitable for use in outdoor environments in order to counteract the natural process of corrosion.

The phenomenon of corrosion is the deterioration of a material caused by exposure to atmospheric agents, chemicals, etc.

The rate of corrosion depends, among other things:

- on the aggressiveness of the environment in which the product is placed
- on the maintenance of the product

- Aggressiveness of the environment

The classification in Italy is regulated by the UNI EN ISO 12944-2 standard, which correlated the type of outdoor environment to a corrosion class:

Corrosion class	Typical outdoor environments
C2 - Low	Areas with low level of pollution, mainly rural areas.
C3 - Medium	Urban and industrial areas, modest pollution by sulphur dioxide. Coastal areas with low salinity.
C4 - High	Industrial and coastal areas with moderate salinity.
C5M - Very high (marine)	Coastal and offshore areas with high salinity.
C5I - Very high (industrial)	Industrial areas with high humidity and aggressive atmosphere.

Materials and Finishes Maintenance

Steel - Plain paints / Embossed paints / Special paints



Cleaning tips

- Products

Before using a cleaning agent, make sure that it is suitable for cleaning painted surfaces (see technical data sheet).
If a strong cleaning agent is to be used to remove heavy soiling, it must always be diluted and tested on small areas that are not visible in order to check their suitability.
Under no circumstances may abrasive or polish cleaners or any detergents containing solvents or solutions containing chloride hydrocarbons, esters or ketones be used.

- Frequency

- The frequency of cleaning depends on:
- The environment in which the surface is located, that is, rural, marine, industrial or a combination of these environments, etc.;
 - The levels of air pollution;
 - Whether placed indoors or outdoors;
 - If the surface is subject to an erosive action of the coating, due to sand, dust, etc.;

Corrosion class	Typical outdoor environments	Checking and cleaning frequency
C2 - Low	Areas with low level of pollution, mainly rural areas.	12 months
C3 - Medium	Urban and industrial areas, modest pollution by sulphur dioxide. Coastal areas with low salinity.	6 months
C4 - High	Industrial and coastal areas with moderate salinity.	3 months
C5M - Very high (marine)	Coastal and offshore areas with high salinity.	2 months
C5I - Very high (industrial)	Industrial areas with high humidity and aggressive atmosphere.	2 months

- Maintenance / Restoration

- In case of need for a restoration of the painted surface due to:
- Heavy soiling due to incorrect cleaning;
 - Normal degradation over time;
 - Accidentally damaged coating (the damaged area should be repaired as soon as possible to avoid oxidation/rusting triggers);
- It is recommended to use companies/operators with appropriate skills.



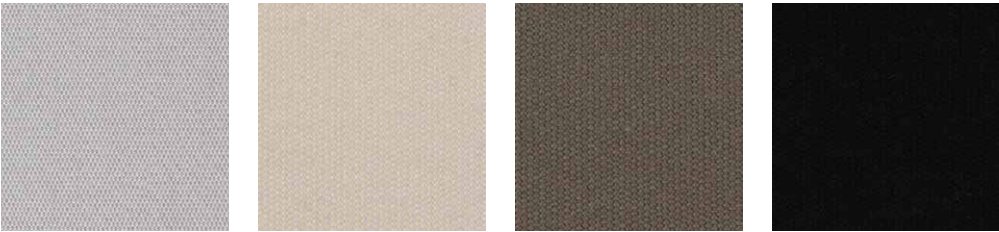
Fabrics for Gazebo Cover

Materials and Finishes Maintenance

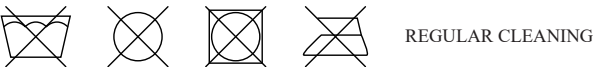
Fabrics for Gazebo Cover



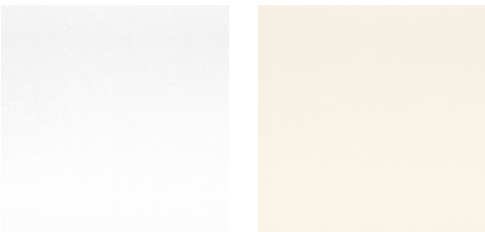
DICKSON ORCHESTRA - Cat.C



6196120 Pierre 7133120 Naturel 7559120 Taupe 6028120 Noir



DICKSON TEXTURA - Cat.C



7311 Natural 7462 Nacre



The fabrics used for gazebo covers are treated with a special finish which delays the forming and accumulation of dirt.
In order not to spoil this treatment, cleaning of the fabric must be done regularly respecting the following recommendations:

Standard maintenance:

- Dust and dry awning as thoroughly as possible to remove all surface particles by vacuuming, air blasting, beating or brushing.

Stain removal:

- For fingerprints or grease stains, use soapy water.
- For watermarks, sponge out as much as you can and rub gently with a moist cloth. Never use detergents or other chemical products.
- Do not machine wash.
- Do not use pressure washer machine.



Fade Resistant



Water & Stain Resistant



Protects from the UV and Heat



Tear Resistant



Mold Resistant



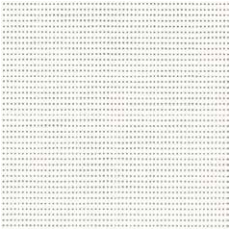
Easy Care

Materials and Finishes Maintenance

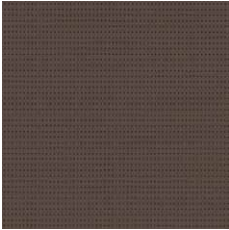
Fabrics for Gazebo Cover



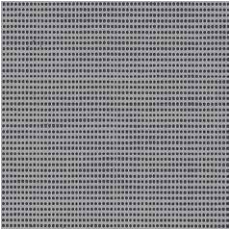
SOLTIS 86



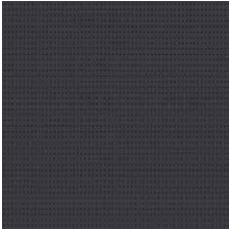
2044 White



2043 Bronze



2045 Beaten metal



2047 Anthracite



REGULAR CLEANING

SOLTIS textiles has a surface treatment that contains an anti-grip to withstand the pollution.

To avoid sedimentation of polluting agents however, cleaning must be carried out regularly.

How to make regular cleaning.

- Ensure the SOLTIS textile is rolled out.
- Spray a detergent like chanteclair
- According to the severity of the dirt or stain, leave for 2 to 3 minutes.
- Rub with a soft brush or a white cloth.
- Rinse with clean water or wipe with a wet sponge.
- In case of deep staining, repeat the above procedure.

Chemical products are forbidden

- Leave the SOLTIS textile to dry, spread out in the open air if weather conditions allow.



Fade Resistant



Water & Stain Resistant



Protects from the UV and Heat



Tear Resistant



Mold Resistant



Easy Care



Curtains Fabrics

All our fabric does not promote mildew growth, however, mildew may grow on dirt and other foreign substances that are not removed from the fabric.

Regular cleaning is therefore recommended to keep fabrics in good condition.

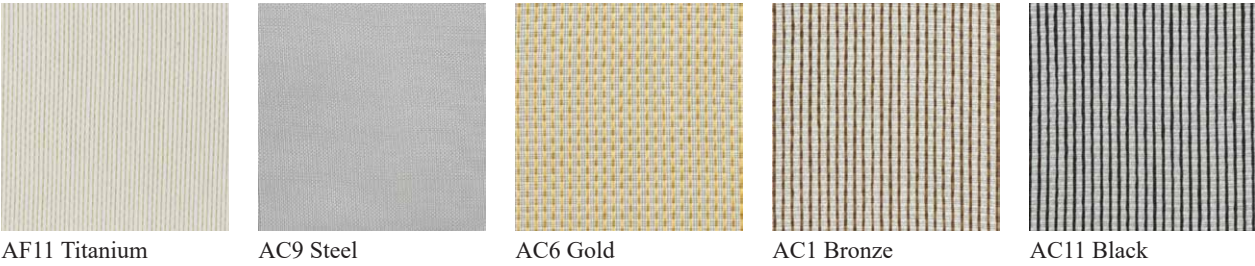
For tough stain please refer to DFN customer care.

Materials and Finishes Maintenance

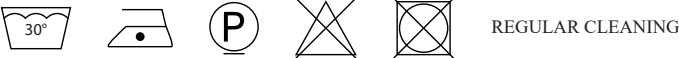
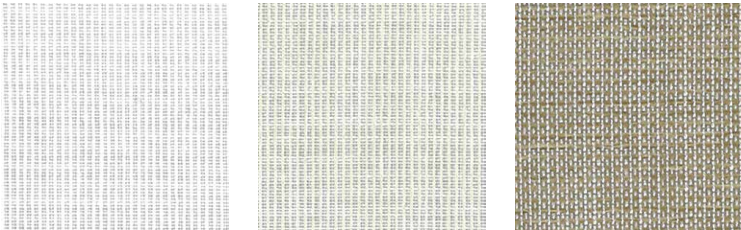
Curtains fabrics



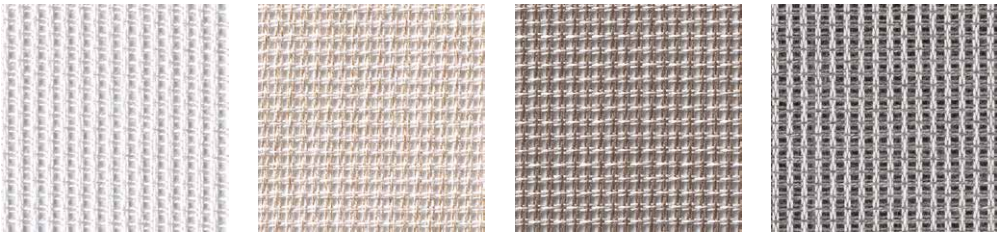
TULLE - Cat.C



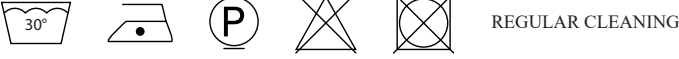
COLORVIRA 1 - CAT.C



ALBIS - Cat.C



LINESTYLE 1- Cat.C





Fabrics

All our fabric does not promote mildew growth, however, mildew may grow on dirt and other foreign substances that are not removed from the fabric.

Regular cleaning is therefore recommended to keep fabrics in good condition.

For tough stain please refer to DFN customer care.

Materials and Finishes Maintenance

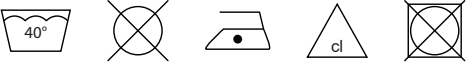
Fabrics



SUNBRELLA - Cat.C

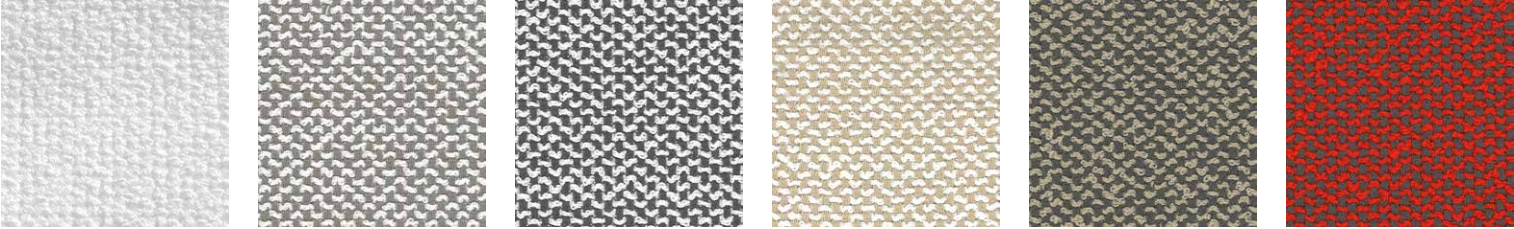


5404 Natural 5453 Canvas 3729 Taupe 5432 Bay Brown 5408 Black

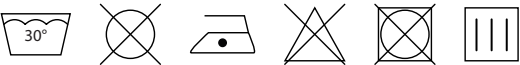


REGULAR CLEANING

CAMELIA - Cat.E

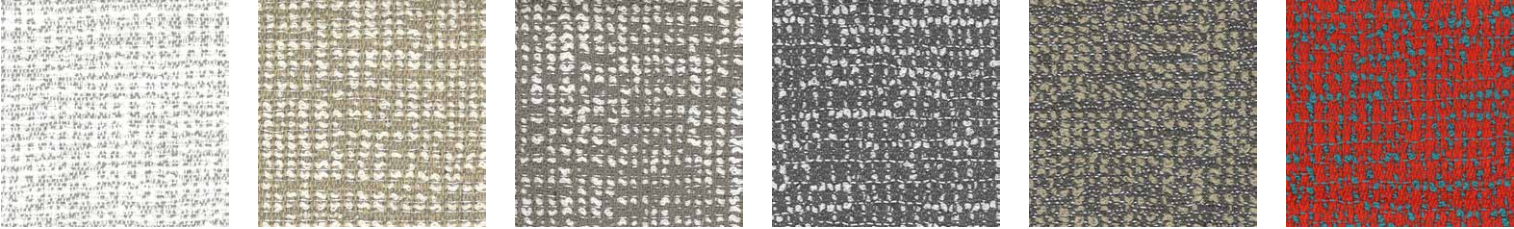


001 White 018 Grey 017 Steel 014 Canvas 022 Taupe 028 Pepper



REGULAR CLEANING

AMARILLIDE - Cat.E



021 Ash 014 Canvas 018 Grey 017 Steel 022 Taupe 029 Mineral Red



REGULAR CLEANING

BRANDED SAMUELE MAZZA OUTDOOR - Cat.E



15 Bianco 79 Grigio 151 Champagne 926 Tortora 81 Marrone



REGULAR CLEANING

Materials and Finishes Maintenance

Fabrics



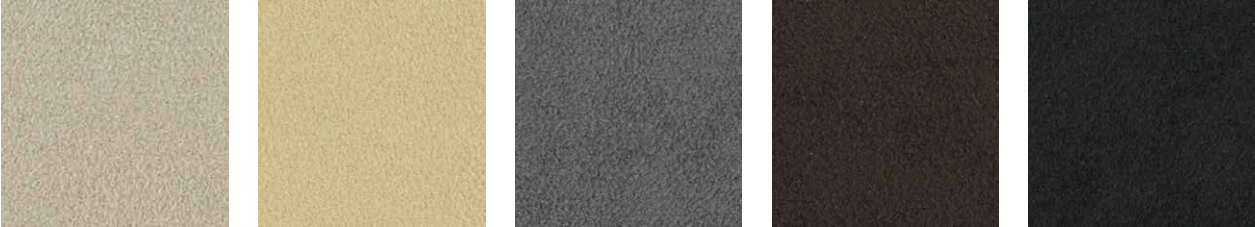
PIERRE FREY - VELOUR HYERES - Cat.F



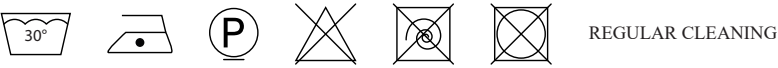
Ecrú Tapir Florida Moutarde Jeune pousse



ALCANTARA OUTDOOR - Cat.G



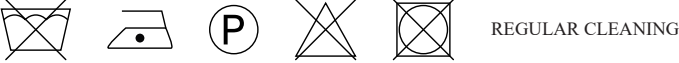
1205 Tortora 1313 Beige 3883 Grigio 9550 Marrone 9604 Nero



SATIN- Cat.G



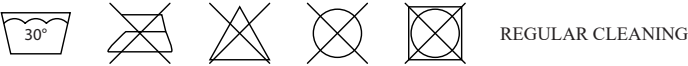
White Champagne



PIERRE FREY - SARGI - Cat.G



F3835001 - Calcaire



Materials and Finishes Maintenance

Fabrics



PIERRE FREY - ERCOLE - Cat.G



Beige Celadon

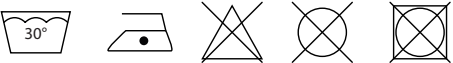


REGULAR CLEANING

PIERRE FREY - PINETO - Cat.S



Sable blanc



REGULAR CLEANING

PIERRE FREY - BARI - Cat.S



Sable Sauge



REGULAR CLEANING

PERENNIALS - DIAMONDS ARE FOREVER - Cat.S



Paper Bag - Front Paper Bag - Reverse Cerulean - Front Cerulean - Reverse Cherry Bomb - Front Cherry Bomb - Reverse Noir - Front Noir - Reverse



REGULAR CLEANING

Materials and Finishes Maintenance

Fabrics



PERENNIALS - FEEL THE HEAT - Cat.S



White Hot - Front



White Hot - Reverse



Fireside - Front



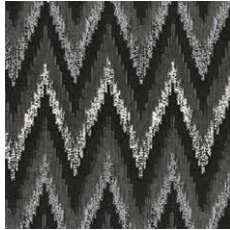
Fireside - Reverse



Blue Blazes - Front



Blue Blazes - Reverse



Flame Noir - Front



Flame Noir - Reverse



REGULAR CLEANING

PERENNIALS - EASTERN EDEN - Cat.S



Bone



Cerulean



REGULAR CLEANING

JIM THOMPSON - MAYA BAY - Cat.S



Sunflower



Marine



Steel



Sand



REGULAR CLEANING

JIM THOMPSON - SAMPAN STRIPE - Cat.S



Golden bamboo



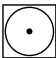
Marine



Pebble



Sand



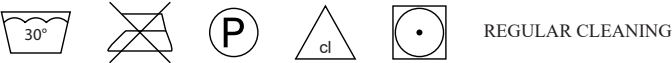
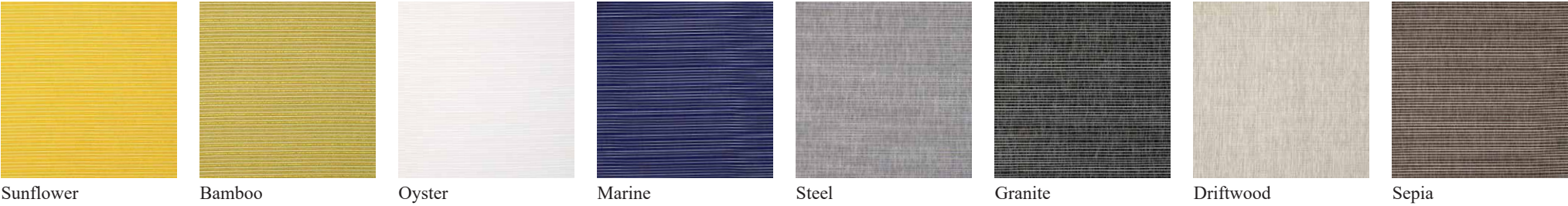
REGULAR CLEANING

Materials and Finishes Maintenance

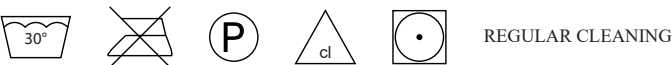
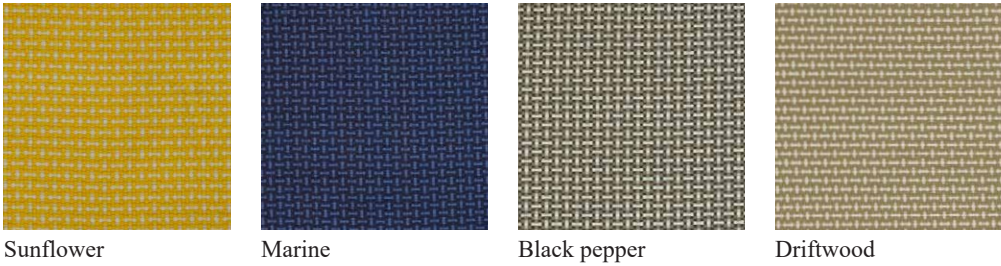
Fabrics



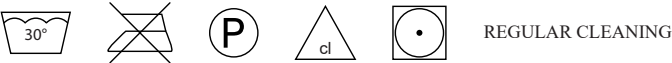
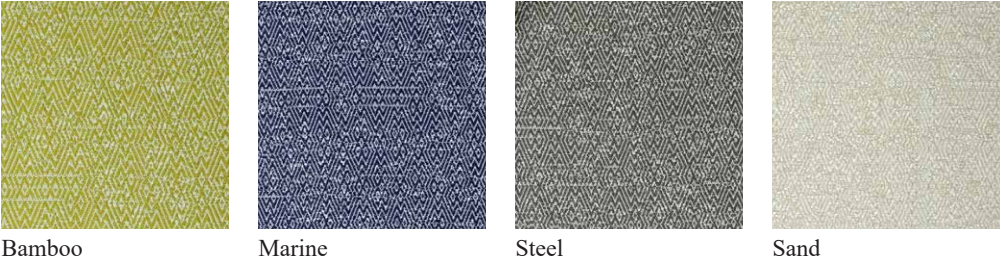
JIM THOMPSON - PADANG - Cat.S



JIM THOMPSON - BINGIN - Cat.S



JIM THOMPSON - JAVA - Cat.S





Eco-leather and Marine

All our fabric does not promote mildew growth, however, mildew may grow on dirt and other foreign substances that are not removed from the fabric.

Regular cleaning is therefore recommended to keep fabrics in good condition.

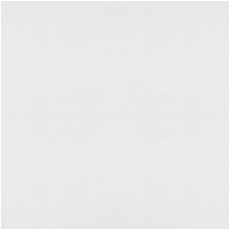
For tough stain please refer to DFN customer care.

Materials and Finishes Maintenance

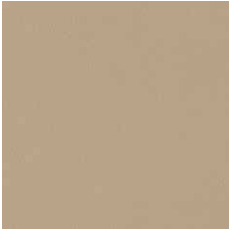
Eco-leather and marine



YACHT REGATTA - Cat.C



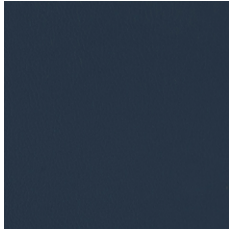
111 Off white



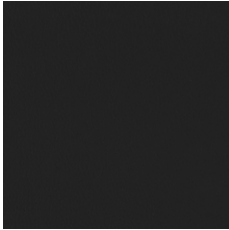
101 Canvas



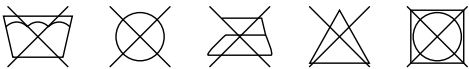
402 Brown



701 Blue



200 Black

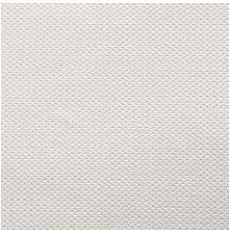


REGULAR CLEANING

FOR ALL TYPES OF STAIN

Remove stain by dabbing spot with a white cotton cloth soaked in a mild liquid detergent or a white cotton cloth soaked in a neutral soap solution (5 g/l).
Rinse with water and dry the surface well using a dry white cloth.

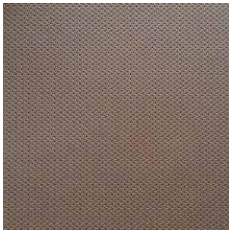
TEXTURE - Cat.D



42161 White



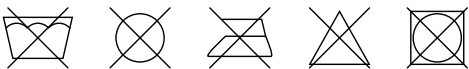
42163 Canvas



42166 Bronze



42171 Black



REGULAR CLEANING

FOR ALL TYPES OF STAIN

Remove stain by dabbing spot with a white cotton cloth soaked in a mild liquid detergent or a white cotton cloth soaked in a neutral soap solution (5 g/l).
Rinse with water and dry the surface well using a dry white cloth.

TERASKIN NAPPA - Cat.F



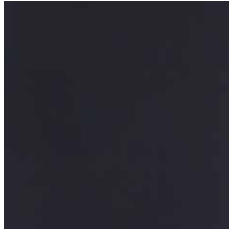
111 White



103 Oyster



408 Chocolate



700 Navy



200 Black



REGULAR CLEANING

FOR ALL TYPES OF STAIN

Remove stain by dabbing spot with a white cotton cloth soaked in pure Ethyl Alcohol (colourless liquid used in alcoholic beverages)

IMPORTANT SUGGESTIONS FOR COMBINATION STAINS es. jeans, ballpoint pen, permanent marker, lipstick, paints ecc.

Wait for the colour on the eco-leather surface to harden, then use an eraser to remove the stain.



Protective Covers

Materials and Finishes Maintenance

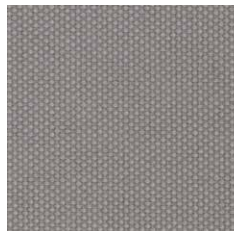
Eco-leather and marine - Protective covers



DICKSON SURLAST



Blue



Light grey



Stain Resistant



Easy Maintenance



For a correct use, it is recommended to cover the furniture only if perfectly clean and dry and to insert the cover in the correct position on the article.

If the cover is placed on damp or wet furniture, take care to remove it within a few hours and allow both the furniture and the cover to dry well.

Never store or fold wet or damp covers, but allow them to dry in a well-ventilated area.

One of the best ways to keep your protective cover made on Surlast looking good is to hose fabrics off on a monthly basis with clear water.

When it's time for a thorough cleaning, Surlast can be cleaned while still on site or, size permitting, they can be removed for cleaning in a washing machine.

General cleaning

- Brush the fabric to remove surface dirt.
- Spray the fabric with cold water.
- Prepare a mixture of soap and water. 1/4 cup mild soap, such as Woolite or Dawn dishwashing liquid, per gallon of lukewarm water.
- Rub the mixture onto the fabric with a soft brush.
- Allow the mixture to act on the fabric.
- Rinse thoroughly with clean water until the cleaning solution is completely removed.
- Allow the fabric to dry in the open air.

Spot stains cleaning

- Prepare a mixture of soap and water. 1/4 cup mild soap, such as Woolite or Dawn dishwashing liquid, per gallon of lukewarm water.
- Apply the mixture using a spray bottle.
- Work the solution into the stain by lightly scrubbing the area with a sponge or very soft bristle brush.
- Rinse thoroughly to remove all soap residue.
- Blot excess moisture with a clean, soft towel or sponge.
- Wet-vacuum or blot excess water.
- Air dry. Repeat steps 3 and 4 until all soap residue is removed.

To get rid of mould, use a solution of 1/10 bleach, 2/10 soap and 7/10 water instead of the mixture of soap and water.

For removable Surlast covers

Hand washing

- Soak fabric in a solution of 1/4 cup mild soap per gallon of lukewarm water.
- Use a sponge or a soft bristle brush as necessary.
- Rinse thoroughly to remove all soap residue.
- Air dry.

Machine washing

Machine wash in cold water. Depending on wash load size, use normal amounts of mild laundry detergent and add 1 cup of bleach. Allow fabric to air dry.

Tips

DO NOT dry clean. Surlast air-dries very quickly. Machine drying is not necessary. If fabric has some wrinkling, use an iron, if necessary, but only on the synthetic setting. As some irons exceed the recommended temperature on the synthetic setting, test a small inconspicuous area before ironing entire piece.

DO NOT use a steamer or iron set to steam setting.

Materials and Finishes Maintenance

Key to symbols



do not wash



wash at or below 30°



wash at or below 40°



do not dry clean



do not iron



iron low temperature



no steam



dry clean - any solvent except trichloroethylene



dry clean - any solvent except trichloroethylene - DELICATE



do not bleach



clorine bleach



do not wring



do not tumble dry



tumble dry low temperature



drip dry



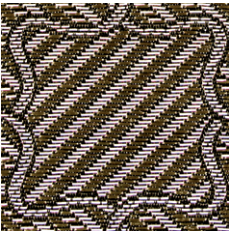
Rugs

Materials and Finishes Maintenance

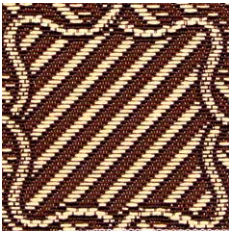
Rugs



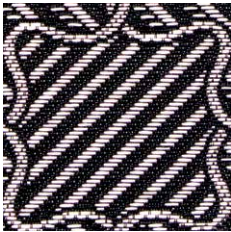
RUG - BRANDED SAMUELE MAZZA



Gold



Brown



Black

Weft : PVC+RAFFIA VISCOSE
Wrap : POLYESTER

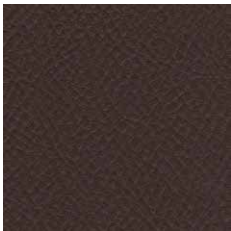
RUG EDGE - ECO-LEATHER



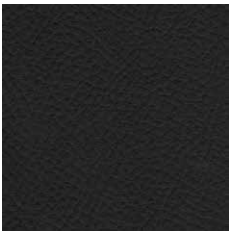
13030 Ivory



13081 Grey Olive



13036 Brown



13045 Black

High-performance materials for an unique rug that is both extremely durable and easy-to-maintain.

Despite its woven textile, the Zibal rug guarantees an **excellent resistance** to liquid, dust and dirt. The warp and weft yarns are joined to a non-slip base layer for a greater stability on the floor.

The technical threads that compose the rug are resistant to mildew and fungus.

Furthermore, the **completely waterproof textile** makes the Zibal rug suitable to be used in any kind of outdoor area, without having any problem with direct sunlight or rain.

The Zibal rug by Samuele Mazza outdoor collection is the perfect accessory to decorate even the most refined and precious outdoor space combining **fashion and high-performances**.

Daily maintenance:

- Brushless vacuum cleaner

Periodic maintenance:

- Dry cleaning or steam cleaning

Stains:

- Dab with a clean cloth; act with specific detergents following the manufacturer's instructions carefully.



Abrasion Resistant



Water Resistant



UV Resistant



Stain Resistant



Easy Maintenance



Marble, Ceramic and Glass

Materials and Finishes Maintenance

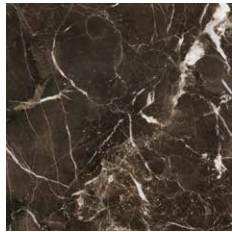
Natural Marbles



Travertino



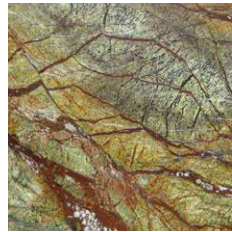
Oriental Portoro



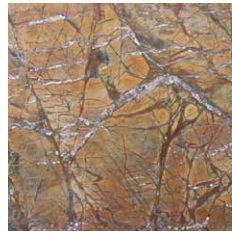
Dark Emperador



Silver Dragon



Rainforest Green



Rainforest Brown

Our marbles are of natural stone and therefore have tones and veins that can vary, which make each piece unique and unimitable.

Each top is treated with silicon wax which is water repellent, that with time loses its effectiveness, for this reason we advise to repeat the process with wax for marble that you can easily find in a hardware store.

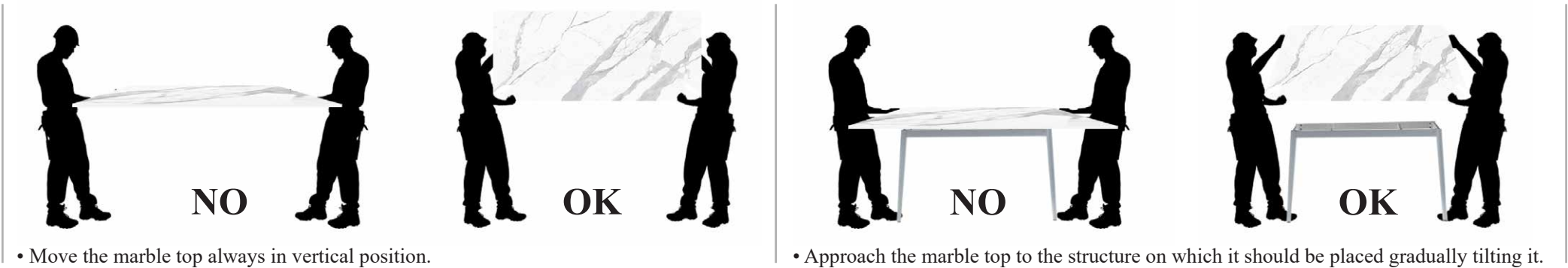
Regular maintenance

For normal cleaning it will be sufficient to pass the surface with water and a neutral detergent or alcohol, ensure not to use detergents that are too aggressive (very high or very low Ph), and in particular to remember to dry immediately the top with a clean cotton cloth.

Precautions

Avoid exposing the surface to chemical substances or solvents, in particular those for paints, that contain trichloroethylene or Methylene chloride, solvents for nails, ammonia or detergents that contain ammonia, brighteners, indelible pens or ink, oily soap, coffee, wine, oil or residues of food, like lemon or tomatoes.

If the tops were to come into contact with any of these substances wash immediately with plenty of water. Active and quick maintenance is fundamental for maintaining the integrity of the marble which is a live and natural product that has the tendency to absorb all substances with which it comes into contact with.



Materials and Finishes Maintenance

Ceramics



CERAMIC MARBLES



04 Statuario



05 Calacatta Gold



27 Calacatta



26 Eternal Gold



18 Rêve Perle



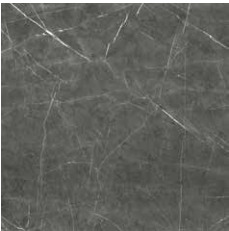
19 Rêve Bleu



20 Rêve Noisette



21 Rêve Choco



24 Marble Gray



25 Yamuna



28 Alpine Gray



29 Alpine Brown



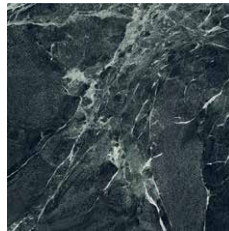
08 Onice Verde



09 Onice Grigio



10 Onice Avorio



32 Aosta Green



31 Connemarle Irish



30 Statuario Delicato

Ceramic tops do not require any particular maintenance, thanks to the high resistance and stability of the material.

Regular maintenance

Cleaning can be carried out very simply using soft and clean cloths soaked in water, possibly adding neutral liquid detergent.

Dry the surface after cleaning is complete.

Do not use metal or abrasive brushes.

Precautions

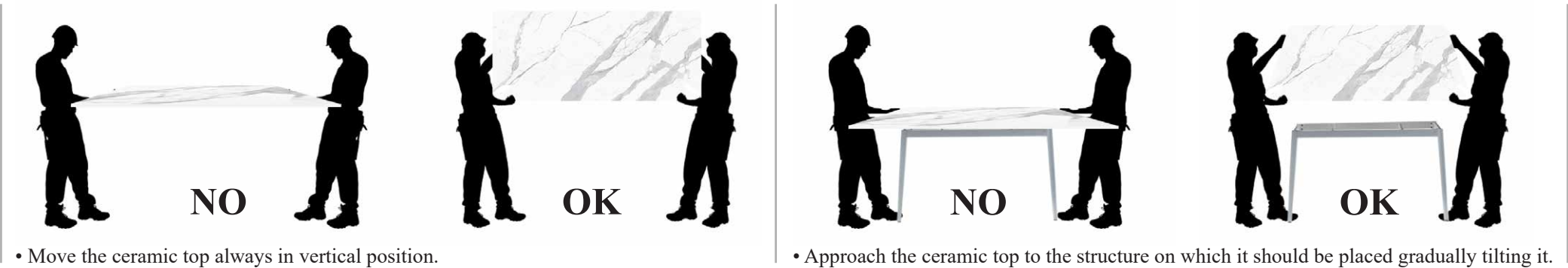
The use of products containing waxes, brighteners, strong acids (eg hydrofluoric, sulfuric, etc.) is not recommended because they could permanently damage the surface.

Remove any spills of staining liquids (like coffee, tea, red wine),caustic substances (such as oven cleaner), acids and colorants as soon as possible and rinse with water.

Ceramic tops are particularly resistant to thermal shocks, however we recommend the use of trivets to protect the surface over time.

Ceramic knives can damage the surface; therefore, we recommend to use cutting boards.

Avoid hitting the surface.

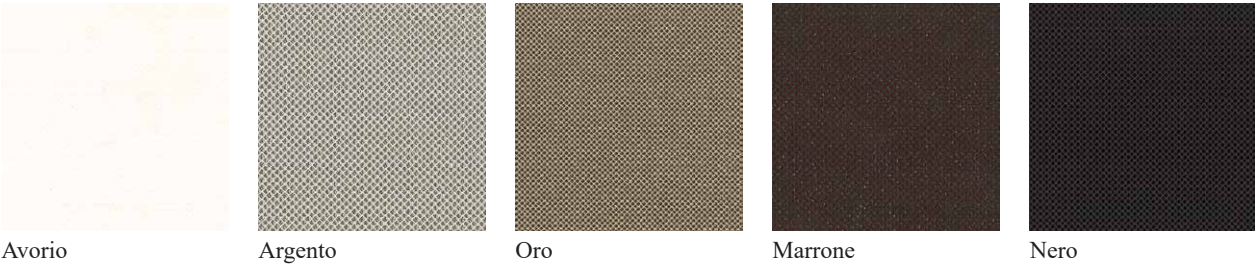


Materials and Finishes Maintenance

Ceramics



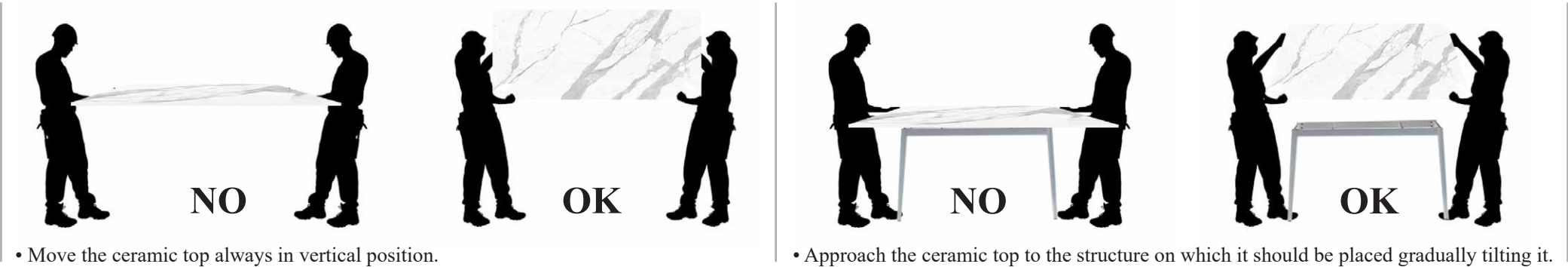
CERAMIC MARBLES WITH METALLIC EFFECT



Ceramic tops do not require any particular maintenance, thanks to the high resistance and stability of the material.

Regular maintenance
Cleaning can be carried out very simply using soft and clean cloths soaked in water, possibly adding neutral liquid detergent.
Dry the surface after cleaning is complete.
Do not use metal or abrasive brushes.

Precautions
The use of products containing waxes, brighteners, strong acids (eg hydrofluoric, sulfuric, etc.) is not recommended because they could permanently damage the surface.
Remove any spills of staining liquids (like coffee, tea, red wine),caustic substances (such as oven cleaner), acids and colorants as soon as possible and rinse with water.
Ceramic tops are particularly resistant to thermal shocks, however we recommend the use of trivets to protect the surface over time.
Ceramic knives can damage the surface; therefore, we recommend to use cutting boards.
Avoid hitting the surface.



Materials and Finishes Maintenance

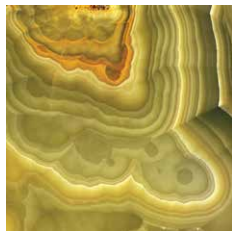
Glass Marbles



Rose Quartz



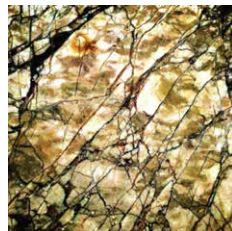
Blue Labradorite



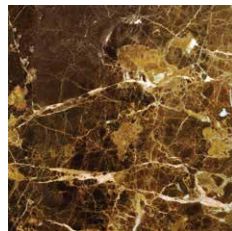
Green Onyx



Yellow Onyx



Dark Onyx



Brown Marble

Glass tops do not require any particular maintenance, thanks to the high resistance and stability of the material.

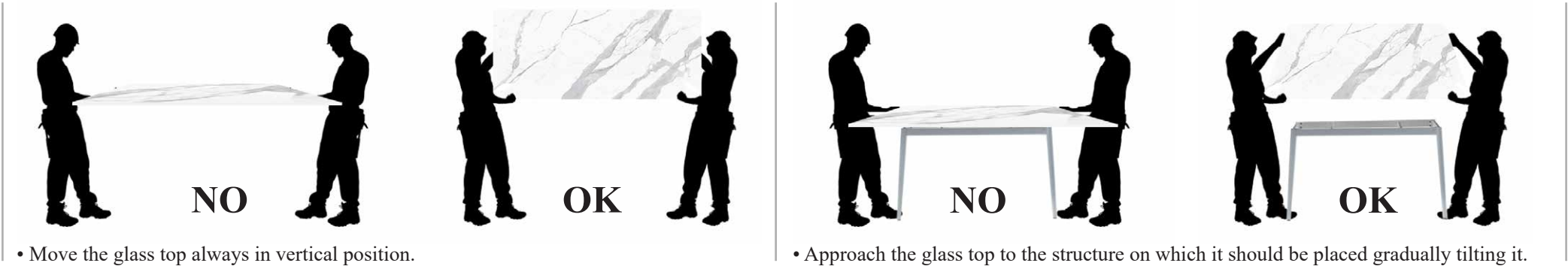
Regular maintenance

Cleaning can be carried out very simply using soft and clean cloths soaked in water, possibly adding neutral liquid detergent.
Dry the surface after cleaning is complete.
Do not use metal or abrasive brushes.

Precautions

Ceramic knives can damage the surface; therefore, we recommend to use cutting boards.

Avoid hitting the surface.





Accessories

Materials and Finishes Maintenance

Accessories



KNOBS



HANDLES



Brass plus galvanized chrome or gold finishing with protective treatment

ANIMAL HEADS



Horse



Wolf



Dog



Horse saddle



Duck

Brass plus galvanized chrome or gold finishing with protective treatment

PLATES



Brass plus galvanized chrome or gold finishing with protective treatment

FEET



CHAIN



SLED



Stainless steel AISI 316 PLUS galvanized finishing chrome or gold with protective treatment

Regular cleaning:

- Use warm soapy water, rubbing vigorously with non-abrasive cloths and sponges.
- Rinse thoroughly with cold water and rub again with clean cloths until completely dry, to avoid streaks.
- Do not use bleach and all related products. Under no circumstances should bleach come into contact with stainless steel.
- Avoid all cleaning products that contain chlorine, nitric acid, sulfuric acid, products with abrasive particles.

More stubborn stains:

- Mix a glass of boiling water with white wine vinegar and 2 tablespoons of baking soda. Dip the sponge in this solution and wipe it over the steel surface.
- Rub vigorously.
- Rinse and dry immediately with a clean cloth.

To keep the steel parts clean and shiny, regular cleaning on a monthly basis is required.

WARNING: accidental impacts can damage the surface finish and favor the appearance of oxidation



Is a trademark licensed to

DFN
OUTDOOR

DFN srl - Italy
via Luigi Einaudi 114 G - 61032 – Fano (PU)
T. 00 39 0721 1835821

e-mail: info@dfnsrl.com

www.dfnsrl.com