



CICCAR

ACRILMARE



modello Classic
ACRILMARE AM6 / 1

ACRILICO

* DISPONIBILI IN MAGAZZINO / AVAILABLE IN STOCK.

BASIC

5
years

260
g/m²



AW1S/ F10



AW1S/ F20

*Acrilico (basic) 100% acrylic fiber.

ACRILMARE

* DISPONIBILI IN MAGAZZINO / AVAILABLE IN STOCK.

PRO

5
years

260
g/m²



AM6 / 119



AM6 / 11



AM6 / 411



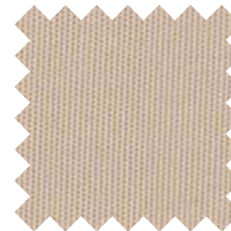
AM6 / 100



AM6 / 118



AM6 / 16



AM6 / 110



AM6 / 116



AM6 / 20



AM6001 / 213



AM6 / 10



AM6 / 24

ACRILMARE

* DISPONIBILI IN MAGAZZINO / AVAILABLE IN STOCK.

PRO

5
years

260
g/m²



AM6 / 14



AM6 / 43



AM6 / 4



AM6 / 29



AM6 / 9



AM6 / 5



AM6 / 15



AM6 / 115



AM6 / 37



AM6 / 17



AM6 / 55



AM6 / 111



AM6 / 7



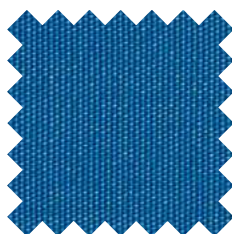
AM6 / 113



AM6 / 114



AM6 / 62



AM6 / 34



AM6 / 162



AM6 / 1



AM6 / 112

ACRILMARE MELANGE

* DISPONIBILI IN MAGAZZINO / AVAILABLE IN STOCK.

PRO

5
years

260
g/m²



AM6003 / 16



AM6003 / 11



AM6003 / 711



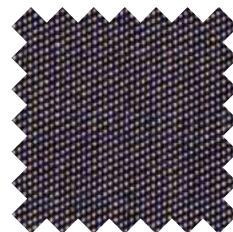
AM6003 / 511



AM6002 / 3



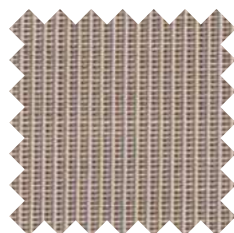
AM6003 / 19



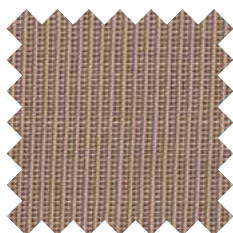
AM6002 / 1



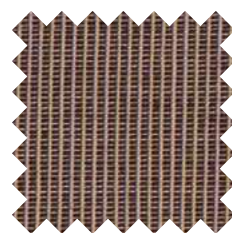
AM6108 / 002



AM6021 / 3



AM6021 / 7



AM6021 / 2



AM6021 / 1



AM6108 / 012

PERFORMANCES



UV PROTECTION
98%



WATER OIL
REPELLENT



MOULD & SOIL
RESISTANT

SPESSORE / THICKNESS	0.5 mm	0.5 mm
PESO / WEIGHT	ca 260 g/m ²	ca 260 g/m ²
COMPOSIZIONE / FIBER ANALYSIS	100% FIBRA ACRILICA TINATA IN MASSA-DOLAN	100% ACRYLIC FIBER SOLUTION DYED-DOLAN
COSTRUZIONE / CONSTRUCTION	ordito Nm 2/34 trama Nm 2/34	ordito Nm 2/34 trama Nm 2/34
RESISTENZA ALL' ABRASIONE / RUBBER TEST	Martindale UNI EN ISO 5470-2 > 20.000 cicli	ASTM D4157 > 15.000 cycles
RESISTENZA COLORE / COLOR RESISTANCE	UNI EN ISO 105-B04 8	UNI EN ISO 105-B04 8
IGNIFUGAZIONE / IGNITION RATE	PASSA IL TEST	MEETS THE REQUIREMENTS

