

ATMOSPHERA

Outdoor Fabrics
and Textiles Collection

2025

ATMOSPHERA

Outdoor Fabrics and Textiles Collection



Cat. A SJA	
Composizione · <i>Composition</i>	100% Sunbrella Acrilica · Non PFAS
Finissaggio · <i>Backing / Finish</i>	Idrorepellente antimacchia <i>Water-repellent & Stain-proof</i>
Peso · <i>Weight</i>	260 g/m ²
Altezza · <i>Width</i>	137 cm
Solidità colori agli UV - esterno - 1000h <i>Colour fastness UV - outdoor - 1000h</i>	4/5
Utilizzi consigliati · <i>Recommended Uses</i>	Sedute portanti, cuscini da decoro, tende, pergola, ombrelloni <i>Seating, cushions, curtains, pergola, umbrella</i>



 << **Scheda Tecnica**
Data Sheet

ISTRUZIONI DI LAVAGGIO · *CARE*








Cat. A 15/151, 929, 926, 94/15, 727/15	
Composizione · <i>Composition</i>	100% fibra acrilica outdoor tinta in massa <i>100% acrylic fibre outdoor solution dyed</i>
Finissaggio · <i>Backing / Finish</i>	Idrorepellente con trattamento PFAS free <i>Water-repellent with PFAS free finishing</i>
Peso · <i>Weight</i>	270 g/m ²
Altezza · <i>Width</i>	152 cm
Solidità colori · <i>Colour fastness</i>	grado 4/5 dopo 1000 ore di esposizione scala dei grigi <i>degree 4/5 after 1000 hour of exposure on the grey scale</i>
Utilizzi consigliati · <i>Recommended Uses</i>	Sedute portanti, cuscini da decoro, tende <i>Seating, cushions, curtains</i>



 << **Scheda Tecnica**
Data Sheet

ISTRUZIONI DI LAVAGGIO · *CARE*







Cat. A 51377/710	
Composizione · <i>Composition</i>	100% fibra acrilica outdoor tinta in massa <i>100% acrylic fibre outdoor solution dyed</i>
Finissaggio · <i>Backing / Finish</i>	Idrorepellente con trattamento PFAS free <i>Water-repellent with PFAS free finishing</i>
Peso · <i>Weight</i>	280 g/m ²
Altezza · <i>Width</i>	145 cm
Solidità colori · <i>Colour fastness</i>	grado 4/5 dopo 1000 ore di esposizione scala dei grigi <i>degree 4/5 after 1000 hour of exposure on the grey scale</i>
Utilizzi consigliati · <i>Recommended Uses</i>	Sedute portanti, cuscini da decoro, tende <i>Seating, cushions, curtains</i>






 << **Scheda Tecnica**
Data Sheet

ISTRUZIONI DI LAVAGGIO · *CARE*







-  Idrorepellente
Water-repellent
-  Ignifugo (vedi certificazioni e normative)
Flame retardant (see specific standards)
-  Riciclato
Recycled

Cat. A NAT	
Composizione · <i>Composition</i>	100% Sunbrella Acrilica · Non PFAS
Finissaggio · <i>Backing / Finish</i>	Idrorepellente antimacchia <i>Water-repellent & Stain-proof</i>
Peso · <i>Weight</i>	290 g/m ²
Altezza · <i>Width</i>	140 cm
Solidità colori agli UV - esterno - 1000h <i>Colour fastness UV - outdoor - 1000h</i>	4/5
Utilizzi consigliati · <i>Recommended Uses</i>	Sedute portanti, cuscini da decoro, tende <i>Seating, cushions, curtains</i>



 << **Scheda Tecnica**
Data Sheet



ISTRUZIONI DI LAVAGGIO · *CARE*











Cat. A 1044/15, 1039/15, 1039/930, 1040/24, 1033/929	
Composizione · <i>Composition</i>	100% fibra acrilica outdoor tinta in massa <i>100% acrylic fibre outdoor solution dyed</i>
Finissaggio · <i>Backing / Finish</i>	Idrorepellente con trattamento PFAS free <i>Water-repellent with PFAS free finishing</i>
Peso · <i>Weight</i>	270 g/m ²
Altezza · <i>Width</i>	152 cm
Solidità colori · <i>Colour fastness</i>	grado 4/5 dopo 1000 ore di esposizione scala dei grigi <i>degree 4/5 after 1000 hour of exposure on the grey scale</i>
Utilizzi consigliati · <i>Recommended Uses</i>	Sedute portanti, cuscini da decoro, tende <i>Seating, cushions, curtains</i>



 << **Scheda Tecnica**
Data Sheet

ISTRUZIONI DI LAVAGGIO · *CARE*



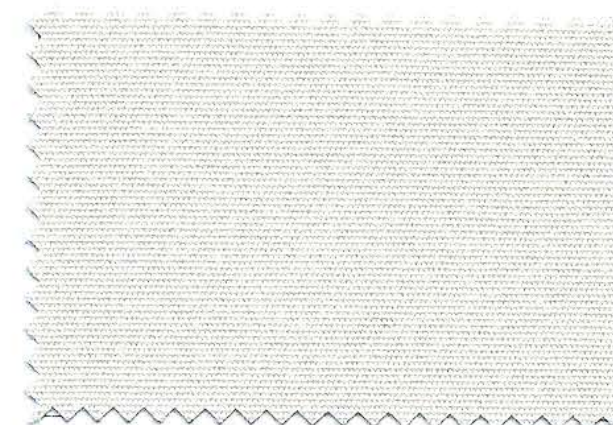

CAT. A **CA020** 1044/15



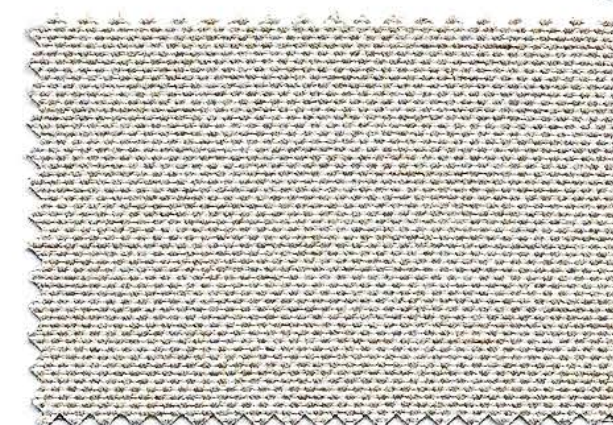
CAT. A **CA019** 1039/15



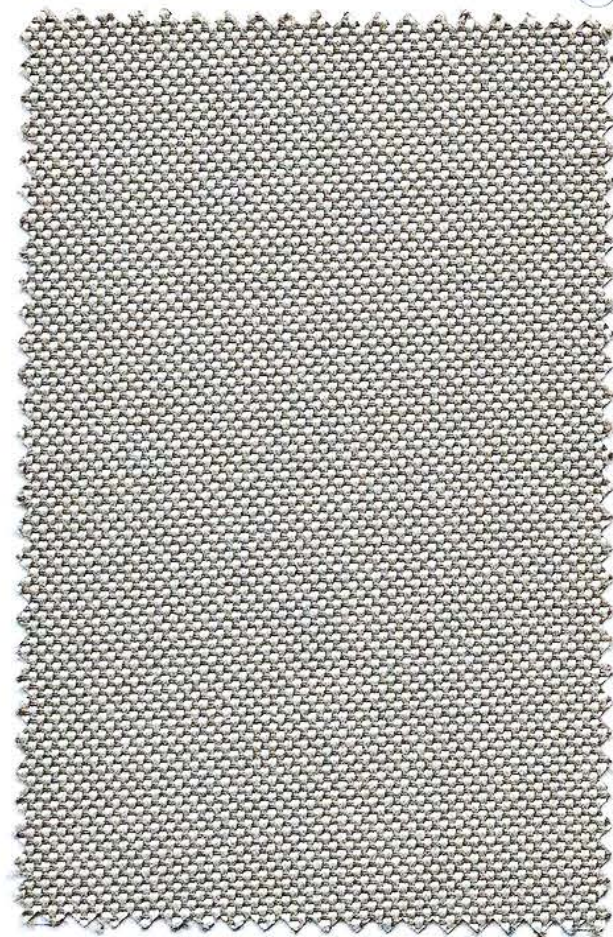
CAT. A **CC101** NAT 10021 CANVAS



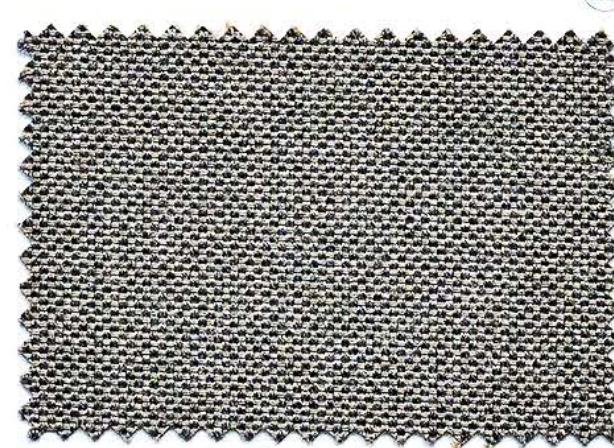
CAT. A **CA029** 15/151



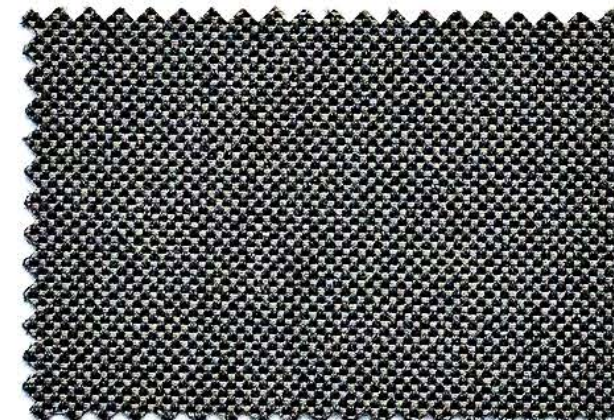
CAT. A **CC104** NAT 10151 LINEN CHALK



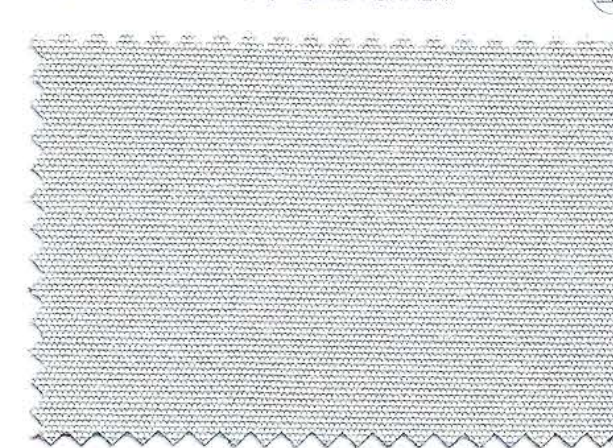
CAT. A **CC102** NAT 10155 TAUPE CHALK



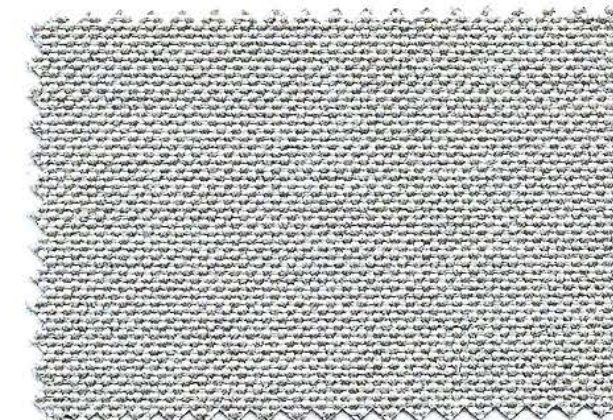
CAT. A **CC103** NAT 10065 CARBON BEIGE



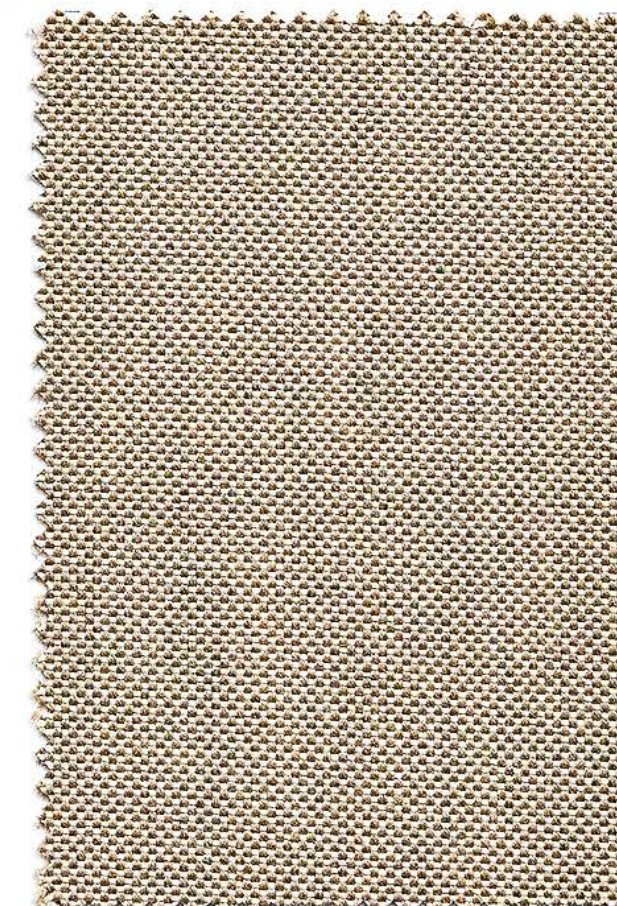
CAT. A **CC234** NAT 10059 DARK TAUPE



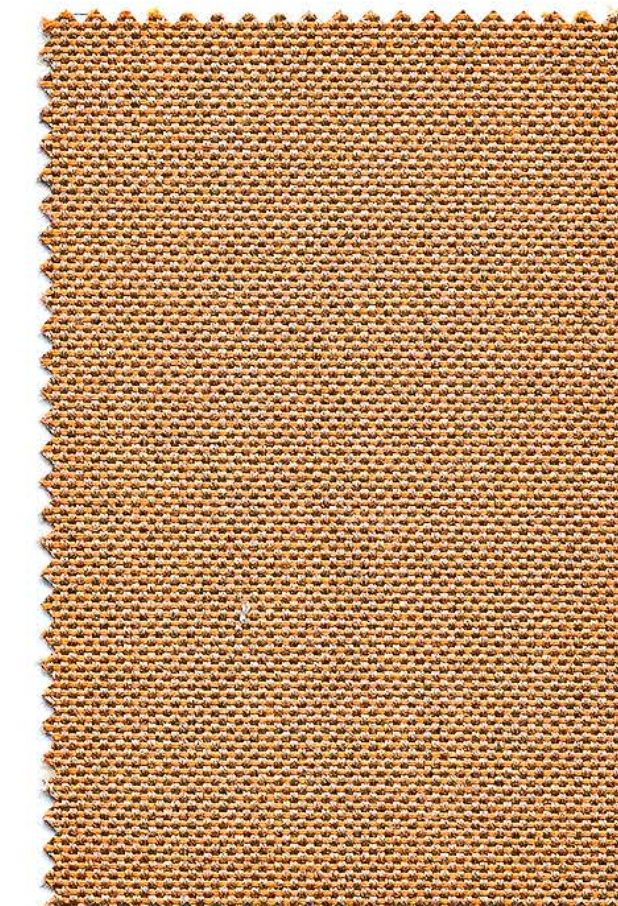
CAT. A **CA076** SJA 3741 SILVER GREY



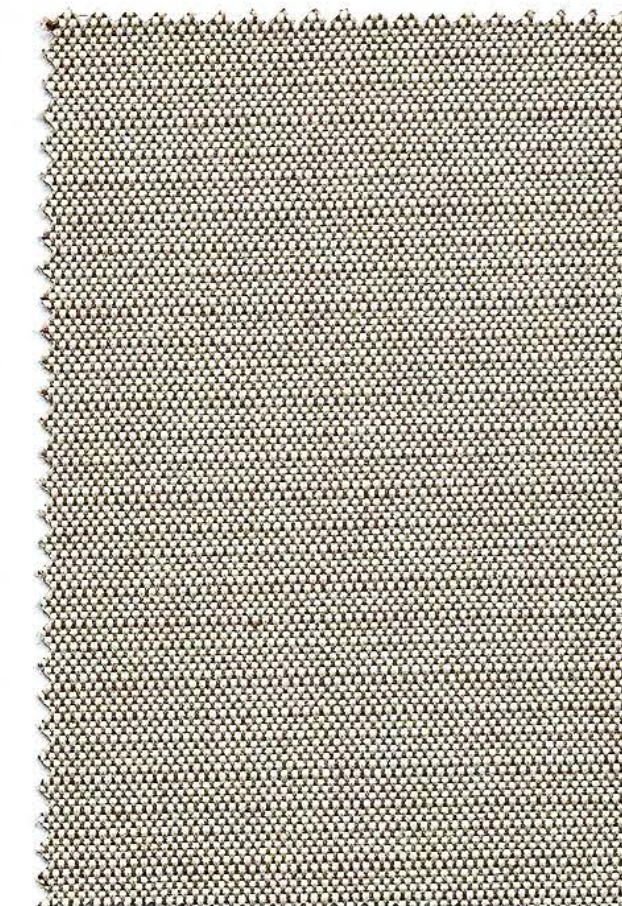
CAT. A **CC238** NAT 10152 GRAUMEL CHALK



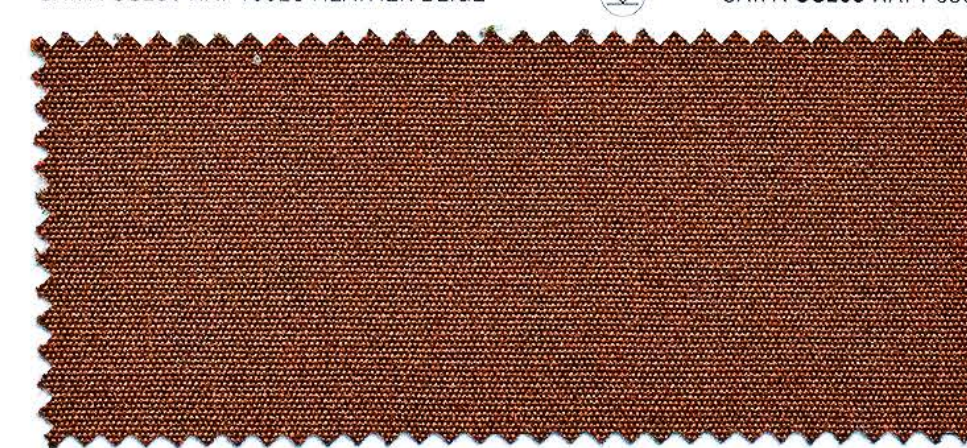
CAT. A **CC231** NAT 10028 HEATHER BEIGE



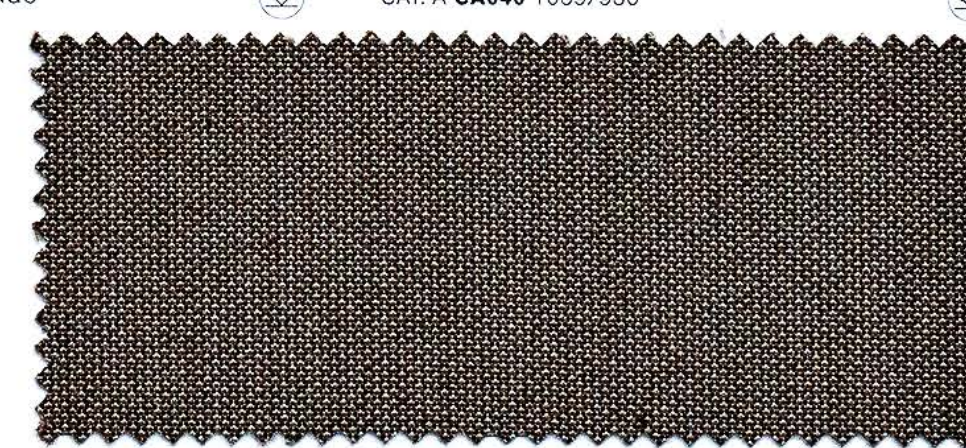
CAT. A **CC255** NAT P098 MANGO



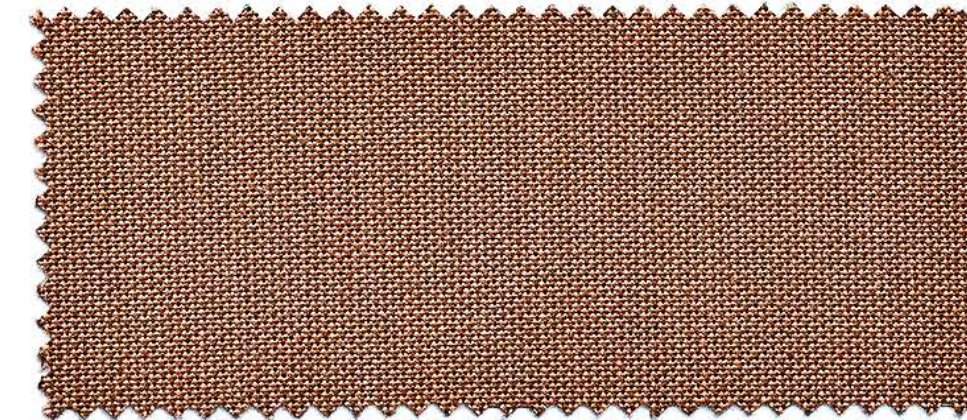
CAT. A **CA040** 1039/930



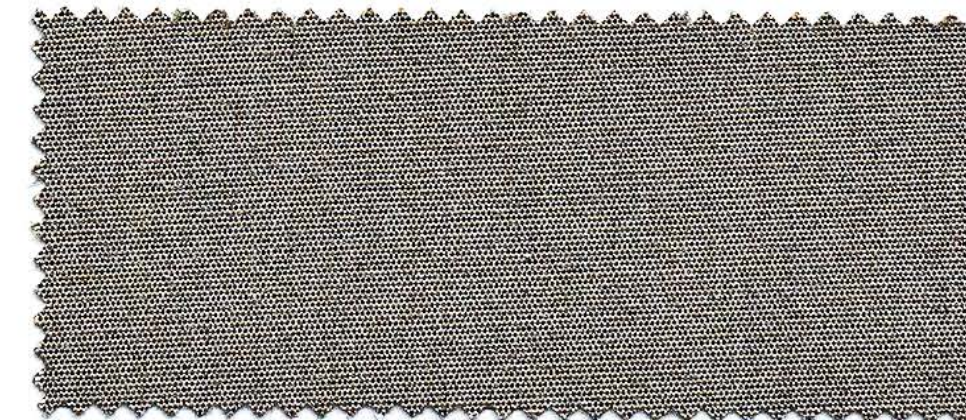
CAT. A **CC276** SJA 3996 WALNUT



CAT. A **CC270** SJA 3127 MINK BROWN

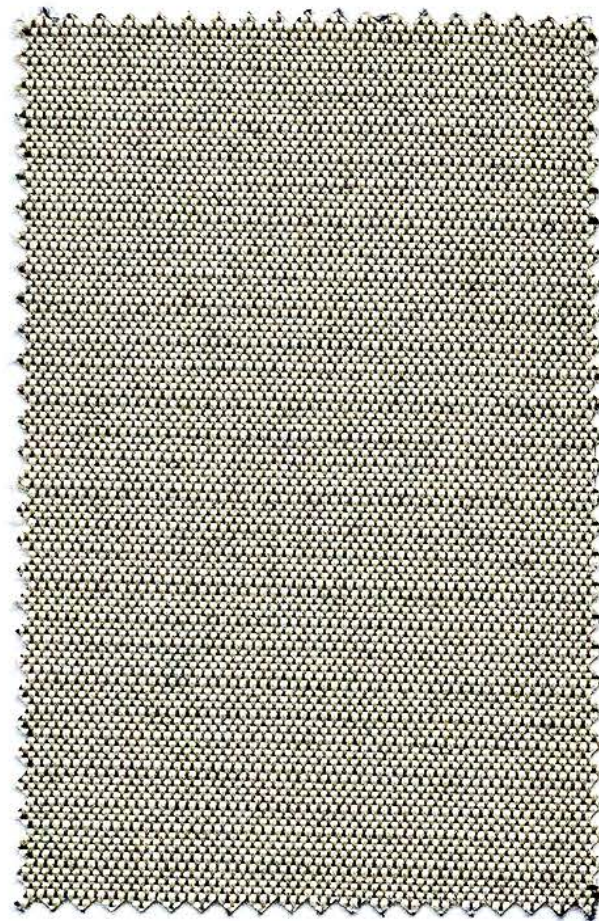


CAT. A **CC278** SJA P102 WADI

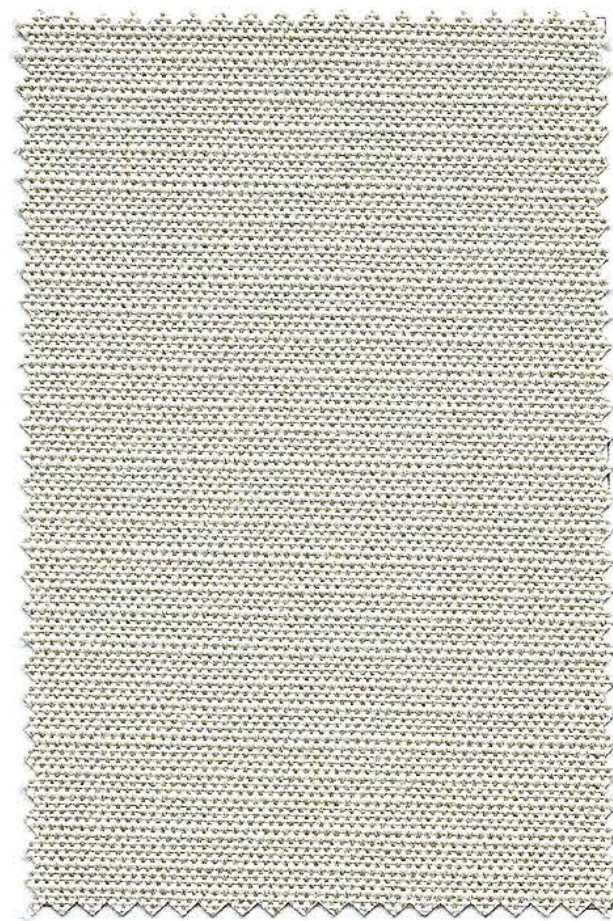


CAT. A **CC274** SJA 3907 TAUPE CHINÉ

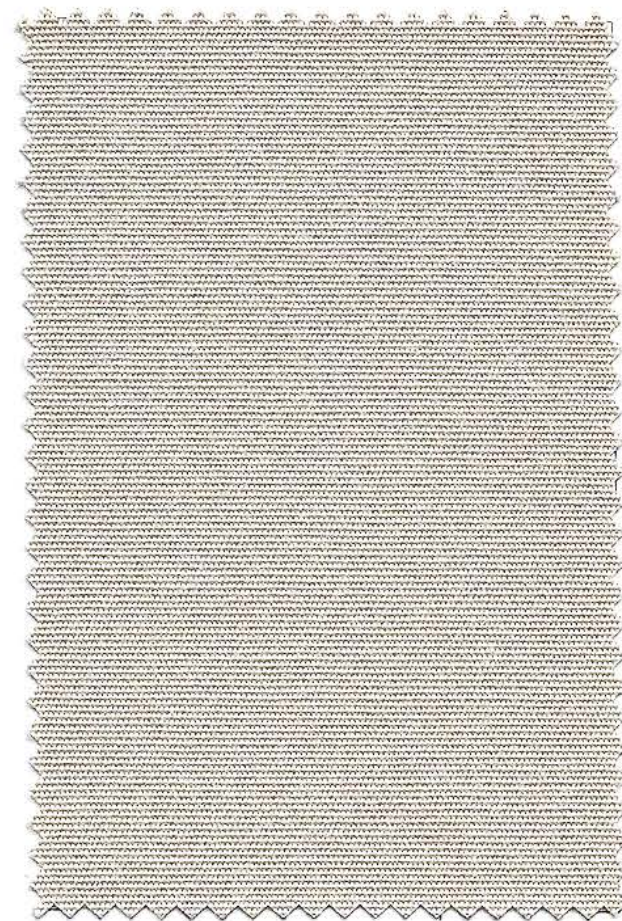




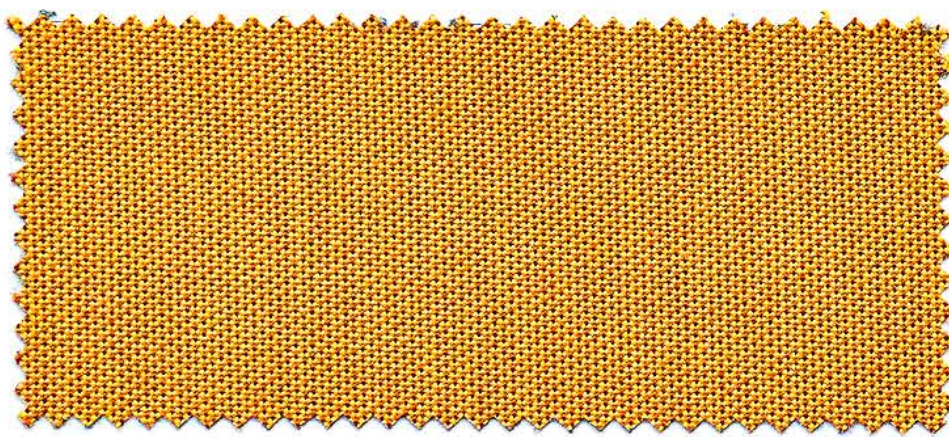
CAT. A **CA041** 1040/24



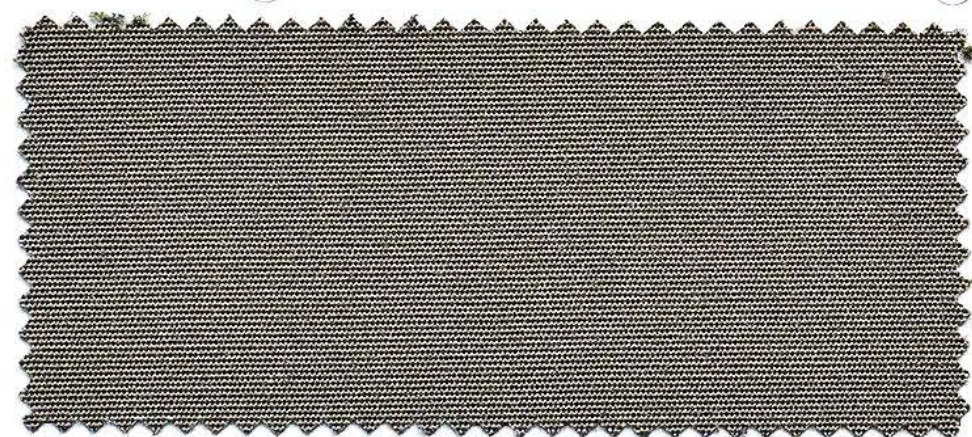
CAT. A **CA018** 1033/929



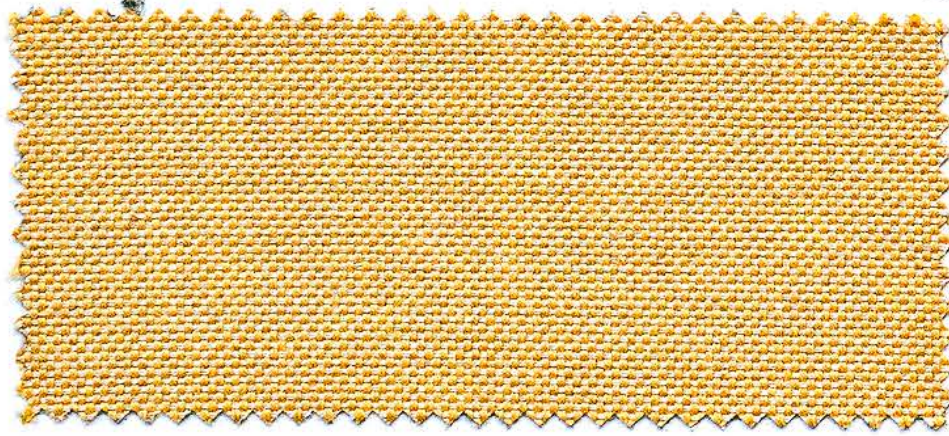
CAT. A **CA077** 929



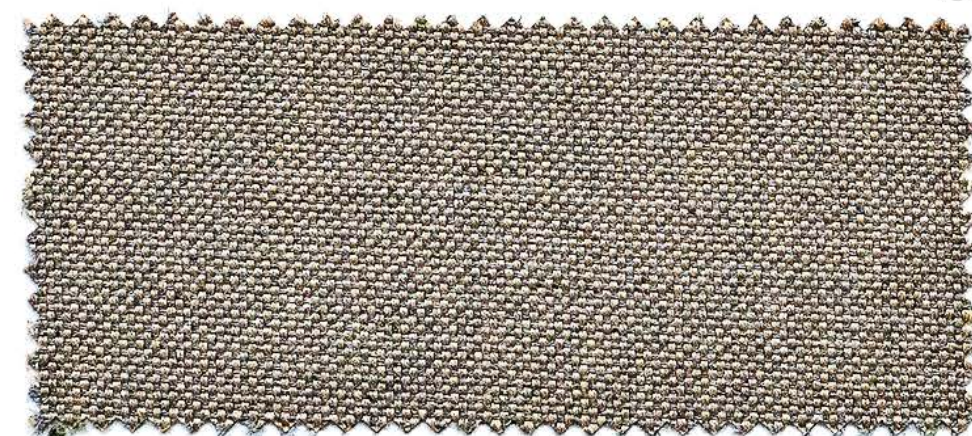
CAT. A **CC279** SJA P106 CURCUMA



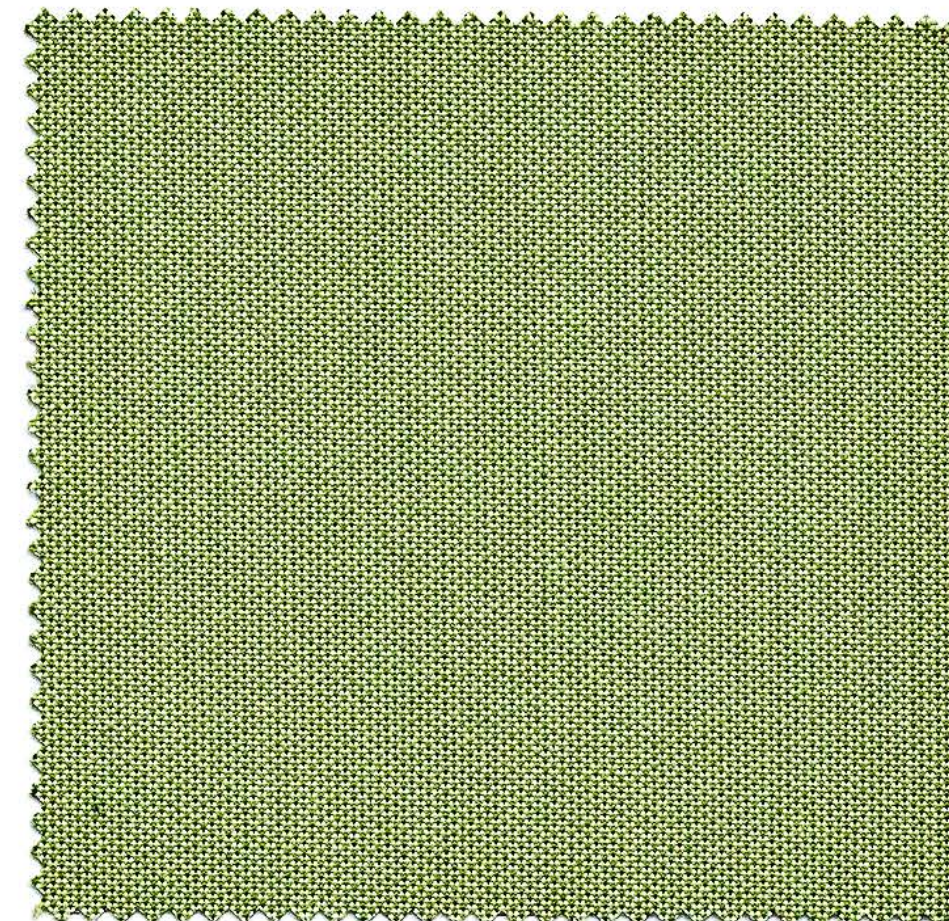
CAT. A **CA005** 926



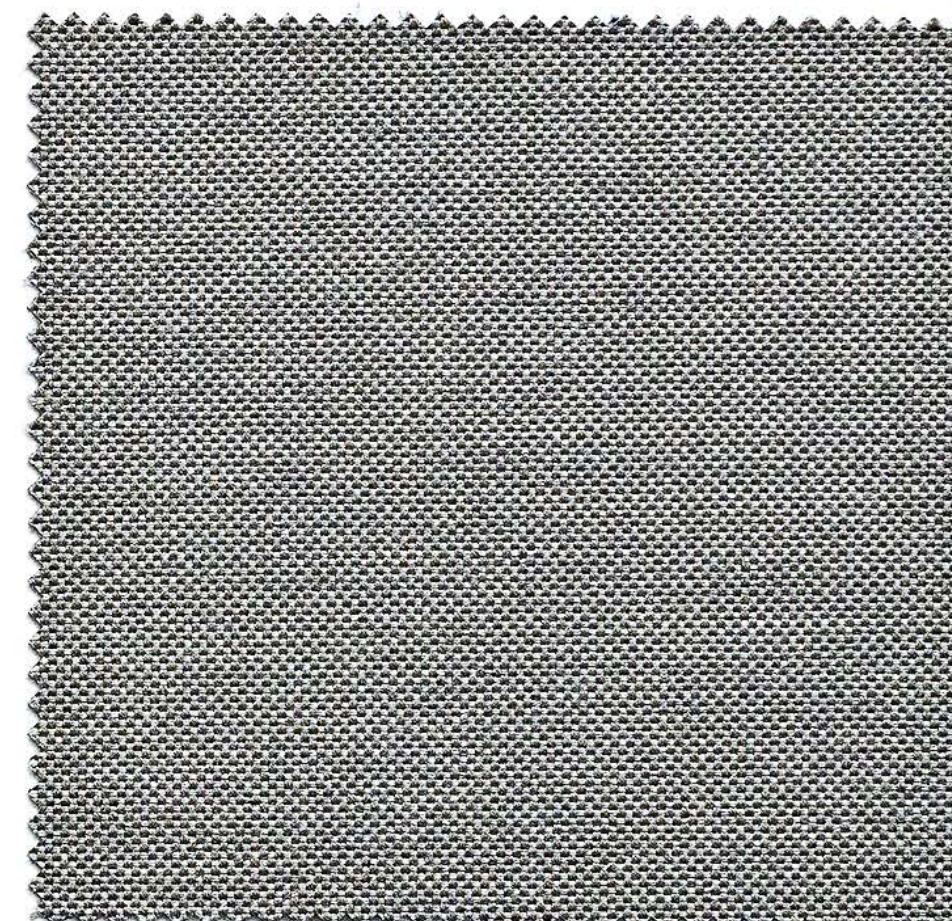
CAT. A **CC250** NAT 10250 SUNLIGHT



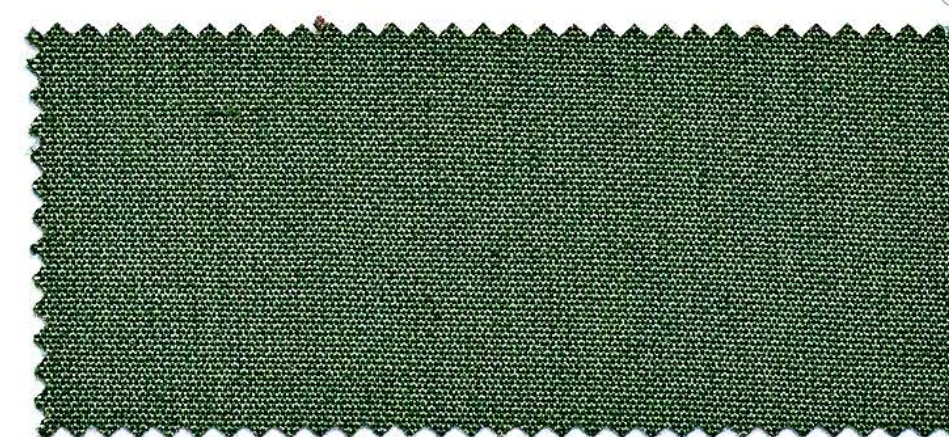
CAT. A **CC232** NAT 10029 HEATHER GREY



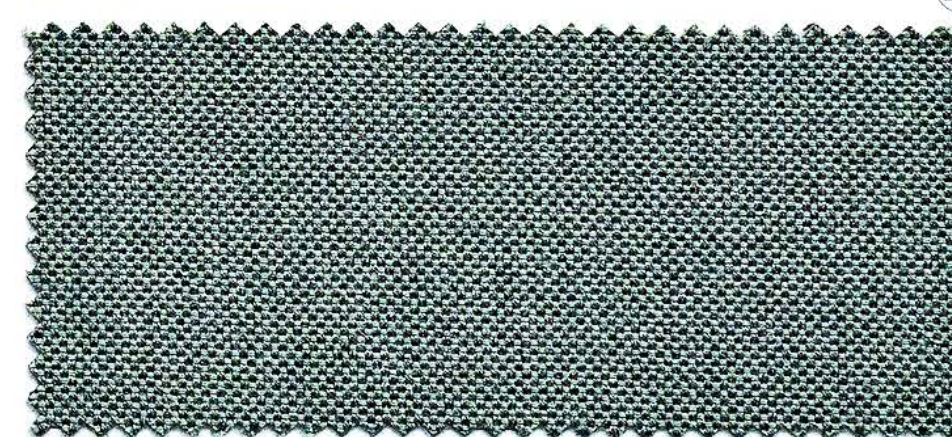
CAT. A **CA072** SJA 3970 LICHEN



CAT. A **CC233** NAT 10040 NATURE GREY



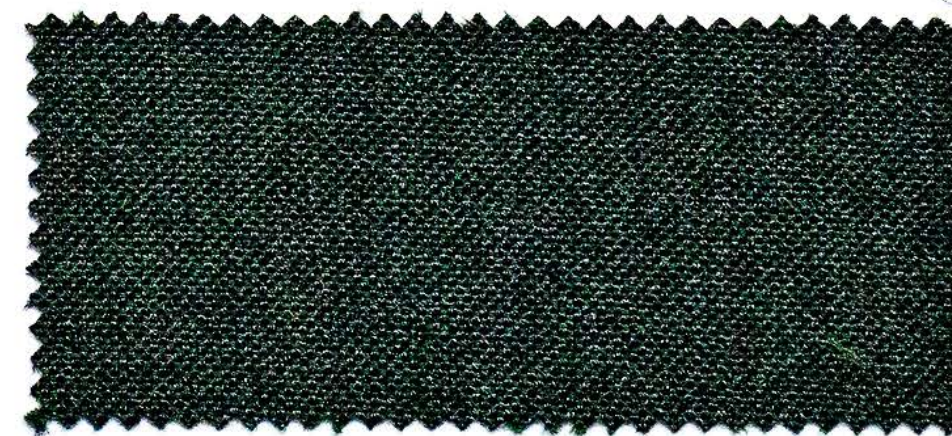
CAT. A **CC277** SJA 3999 CALATHEA



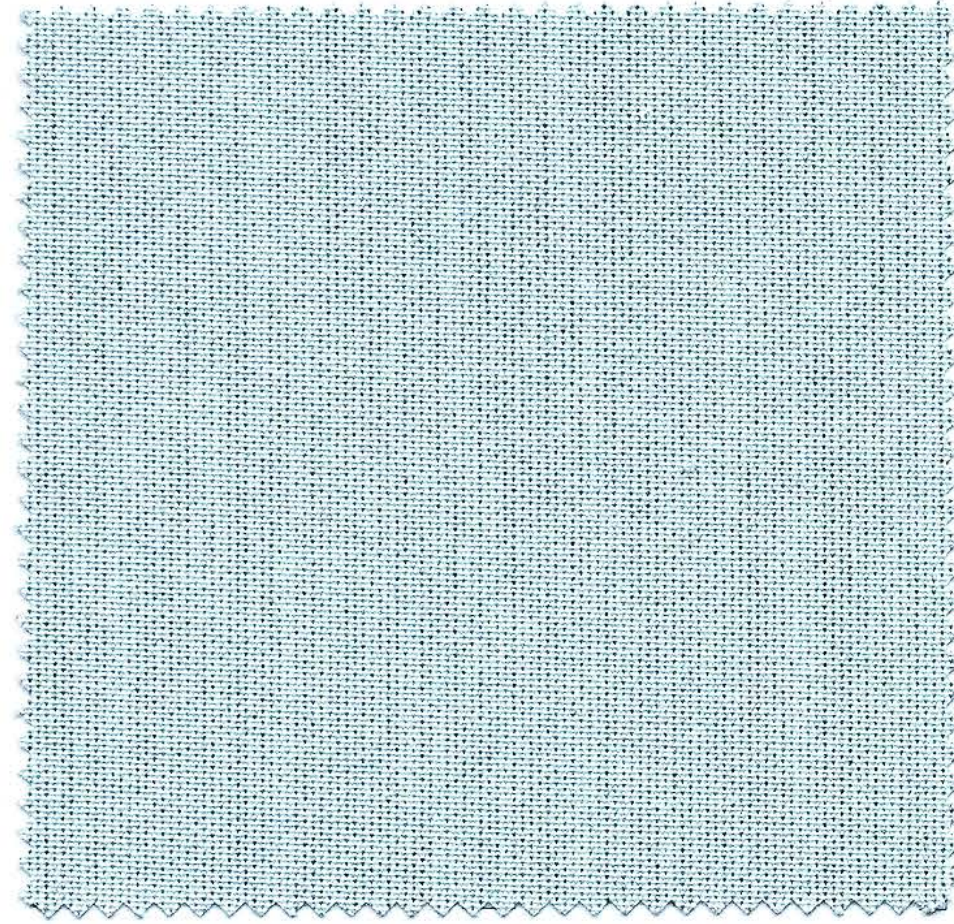
CAT. A **CC254** NAT P097 AGAVE



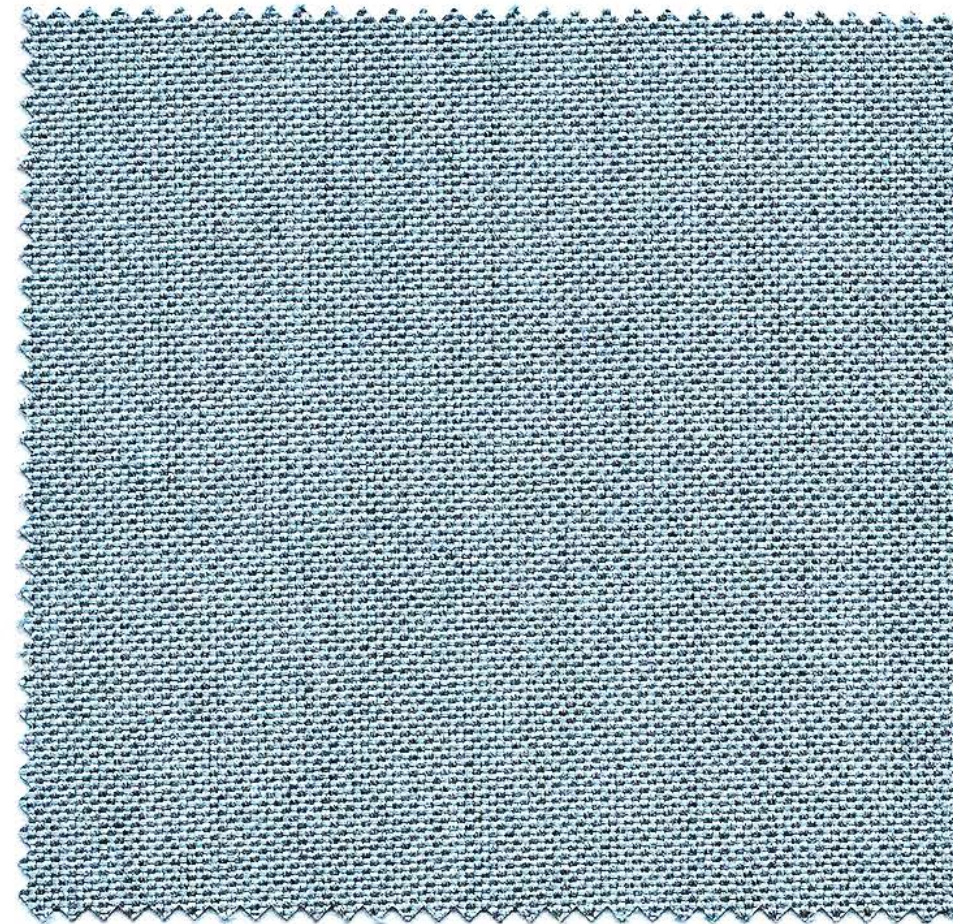
CAT. A **CC237** NAT 10112 BAMBOO



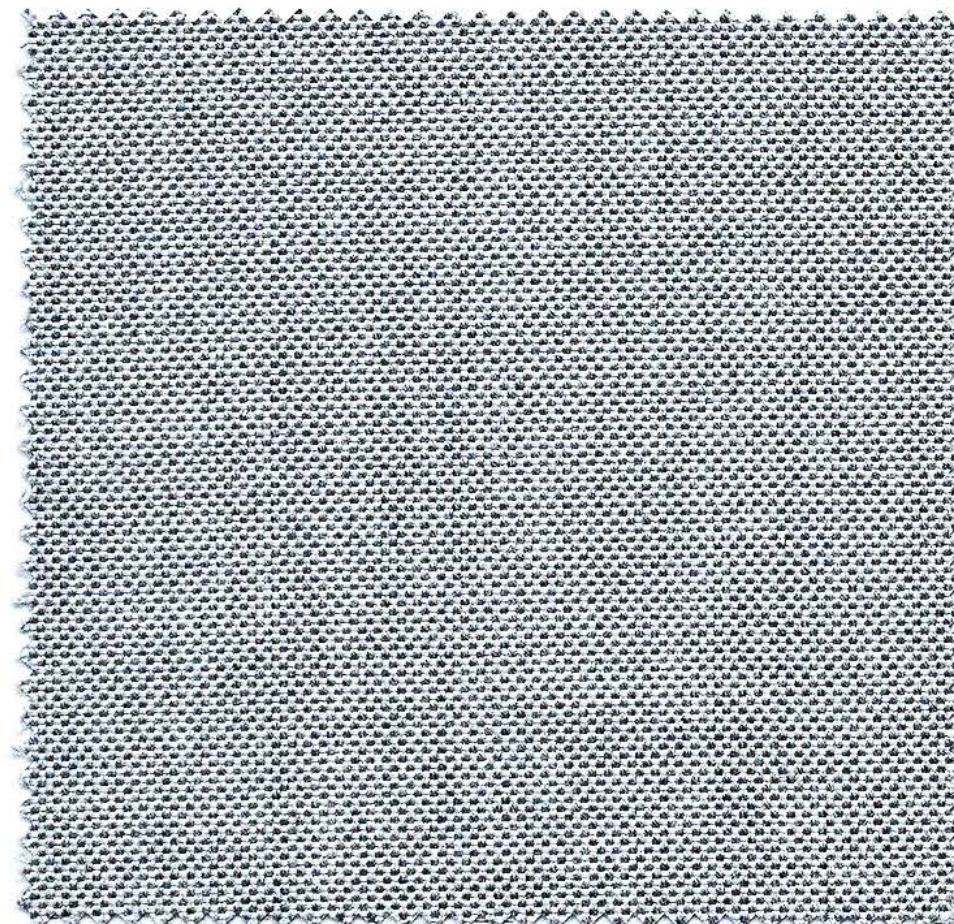
CAT. A **CC236** NAT 10111 POSEDONIA



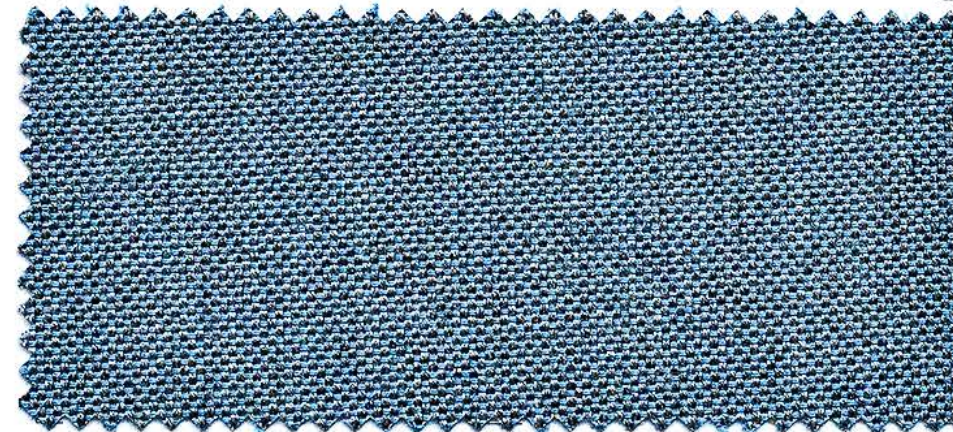
CAT. A **CA074** SJA 3964 CURAÇÃO



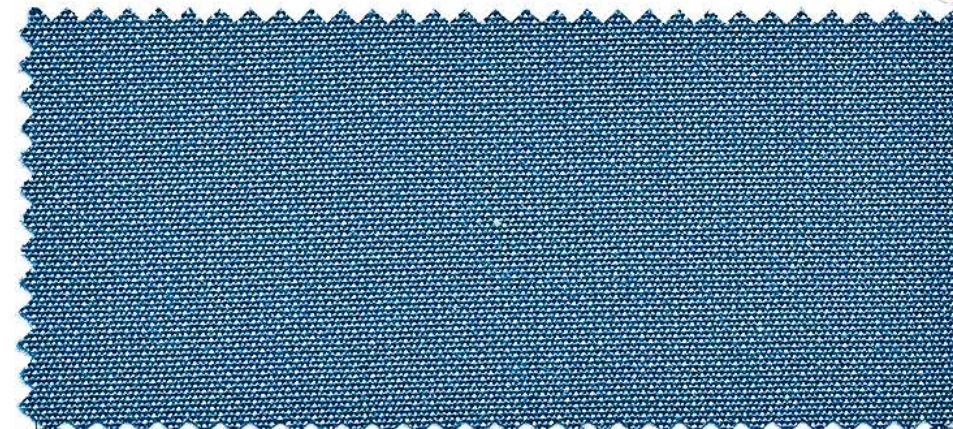
CAT. A **CC230** NAT 10025 FROSTY CHINÈ



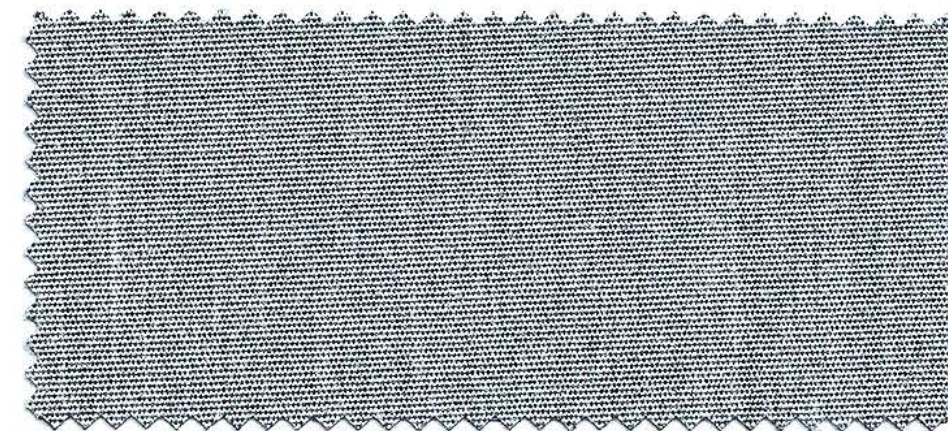
CAT. A **CC253** NAT 10022 GREY CHINÈ



CAT. A **CC235** NAT 10064 CARBON SKY



CAT. A **CC275** SJA 3941 ADRIATIC



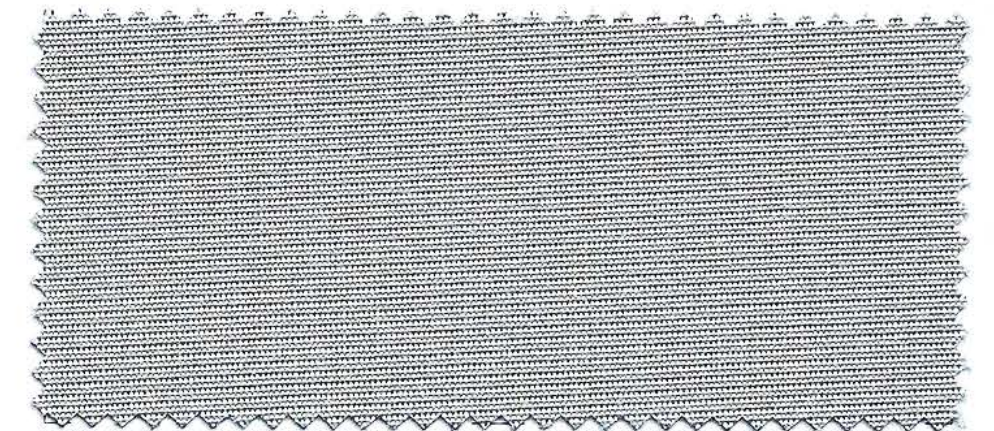
CAT. A **CA015** 727/15



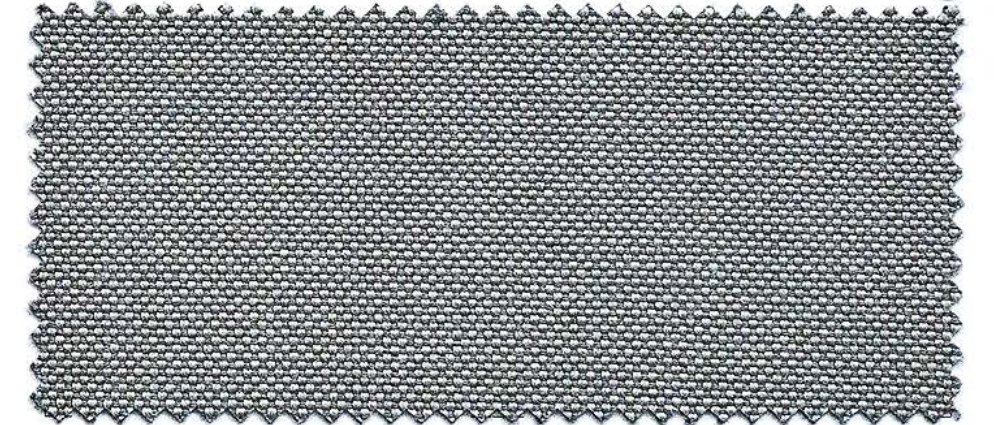
CAT. A **CC272** SJA 3757 FLANELLE



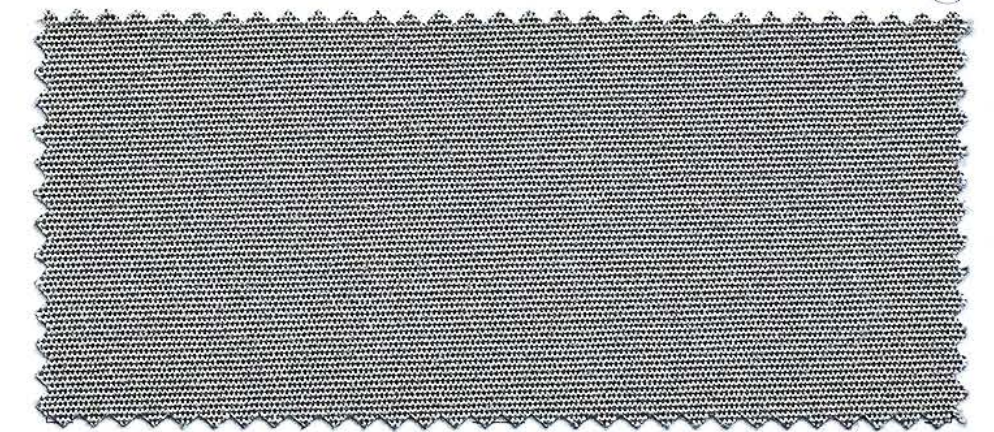
CAT. A **CC273** SJA 3758 SOOTY



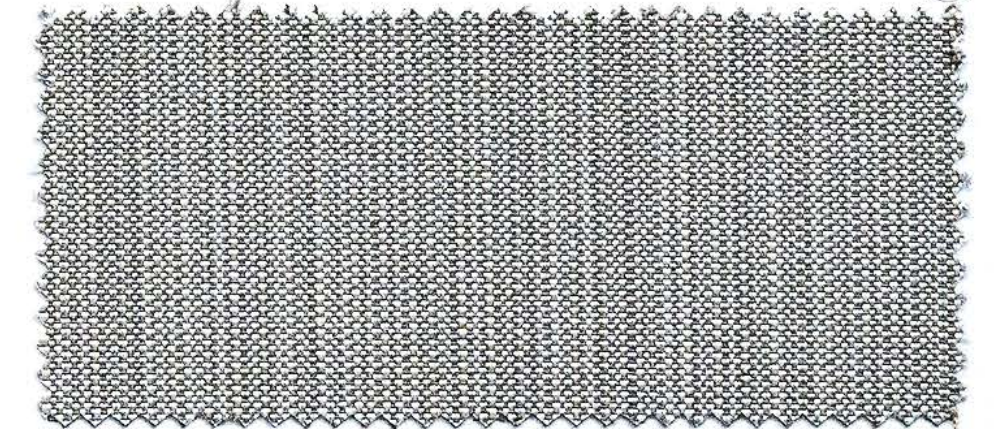
CAT. A **CC271** SJA 3706 SHINGLES



CAT. A **CC252** NAT 5073 CADET GREY



CAT. A **CA014** 94/15



CAT. A **CA022** 51377/710





CAT.


B-C

.IT
TESSUTI POLIESTERE E POLIPROPILENE


.EN
POLYPROPYLENE AND POLYESTER FABRICS

Cat. C HERBIG

Composizione · <i>Composition</i>	100% POLYPROPYLENE
Peso · <i>Weight</i>	980 (+/-5%) Gr./Mtl
Peso · <i>Weight</i>	700 (+/-5%) Gr./MQ
Altezza · <i>Width</i>	140 cm
Martindale	35.000 cicli · <i>cycles</i>
Solidità alla luce · <i>Lightfastness</i>	7/8
Cigarette Test	Pass

 << **Scheda Tecnica**
Data Sheet

ISTRUZIONI DI LAVAGGIO · *CARE*



Cat. C BLAZE

Composizione · <i>Composition</i>	100% POLYPROPYLENE
Peso · <i>Weight</i>	1.080 (+/-5%) Gr./Mtl
Peso · <i>Weight</i>	770 (+/-5%) Gr./MQ
Altezza · <i>Width</i>	140 cm
Martindale	40.000 cicli · <i>cycles</i>
Solidità alla luce · <i>Lightfastness</i>	7/8
Cigarette Test	Pass


 << **Scheda Tecnica**
Data Sheet

ISTRUZIONI DI LAVAGGIO · *CARE*



Cat. C CAPUAL

Composizione · <i>Composition</i>	99% POLYPROPYLENE, 1% SOLUTION DYED ACRILIC
Peso · <i>Weight</i>	880 (+/-5%) g/m
Altezza · <i>Width</i>	140 cm
Martindale	25.000 cicli · <i>cycles</i>
Valutazione dell'infiammabilità <i>Assessment of ignitability</i>	CAL TB117: PASS BS5852 source 0/EN1021-1:2006 (Cigaret test): PASS BS5852 source 1/EN1021-2:2006 (Match test): NOT PASS IMO MSC (67) ANEX 1 PART 8RESOLA652(16):1989 OEKO-TEX standard 100 class 1: PASS

 << **Scheda Tecnica**
Data Sheet

ISTRUZIONI DI LAVAGGIO · *CARE*



Cat. C OLD PANAMAO

Composizione · <i>Composition</i>	98% POLYPROPYLENE, 2% SOLUTION DYED ACRILIC
Peso · <i>Weight</i>	850 (+/-5%) g/m
Altezza · <i>Width</i>	140 cm
Martindale	25.000 cicli · <i>cycles</i>
Valutazione dell'infiammabilità <i>Assessment of ignitability</i>	CAL TB117: PASS BS5852 source 0/EN1021-1:2006 (Cigaret test): PASS BS5852 source 1/EN1021-2:2006 (Match test): NOT PASS IMO MSC (67) ANEX 1 PART 8RESOLA652(16):1989 OEKO-TEX standard 100 class 1: PASS

 << **Scheda Tecnica**
Data Sheet

ISTRUZIONI DI LAVAGGIO · *CARE*



Cat. B NEW SANTANDER

Composizione · <i>Composition</i>	100% POLYPROPYLENE
Peso · <i>Weight</i>	760 (+/-5%) Gr./Mtl
Peso · <i>Weight</i>	545 (+/-5%) Gr./MQ
Altezza · <i>Width</i>	140 cm
Martindale	40.000 cicli · <i>cycles</i>
Solidità alla luce · <i>Lightfastness</i>	7/8
Cigarette Test	Pass


 << **Scheda Tecnica**
Data Sheet

ISTRUZIONI DI LAVAGGIO · *CARE*




Cat. C MS 52

Composizione · <i>Composition</i>	21% FR POLYPROPYLENE - 79 % FR POLYESTER
Peso · <i>Weight</i>	600 Gr./M ²
Altezza · <i>Width</i>	138 cm
Martindale	40.000 cicli · <i>cycles</i>
FR Normative FR Standards	EN 1021 - 1 AND 1021 - 2 PASS ON FR FOAM CIGARETTE TEST: PASS IMO MSC 307(88) FTP PART 8 – UPHOLSTERY – PASS

 << **Scheda Tecnica**
Data Sheet

ISTRUZIONI DI LAVAGGIO · *CARE*



Cat. C DELTA

Composizione · <i>Composition</i>	80% POLYPROPYLENE 20% POLYESTER
Peso · <i>Weight</i>	826 (+/-5%) Gr./Mtl
Peso · <i>Weight</i>	590 (+/-5%) Gr./ M ²
Altezza · <i>Width</i>	138/140 cm
Tessitura · <i>Weaving</i>	Jacquard
Abrasiono Martindale · <i>Abrasion Martindale</i> Ignifugazione · <i>Flammability</i>	80.000 cicli · <i>cycles</i> TB117-2013 / BS5852.0 (Cigarette)

 << **Scheda Tecnica**
Data Sheet

ISTRUZIONI DI LAVAGGIO · *CARE*



Cat. C ALTAI

Composizione · <i>Composition</i>	100% POLYPROPYLENE
Peso · <i>Weight</i>	728 (+/-5%) Gr./Mtl
Peso · <i>Weight</i>	520 (+/-5%) Gr./M ²
Altezza · <i>Width</i>	138/140 cm
Tessitura · <i>Weaving</i>	Jacquard
Abrasiono Martindale · <i>Abrasion Martindale</i> Ignifugazione · <i>Flammability</i>	62.000 cicli · <i>cycles</i> TB117-2013 / BS5852.0 (Cigarette)


 << **Scheda Tecnica**
Data Sheet

ISTRUZIONI DI LAVAGGIO · *CARE*




Cat. B M STRIPE 201

Composizione · <i>Composition</i>	92% FR POLYPROPYLENE - 8 % FR POLYESTER
Peso · <i>Weight</i>	540 Gr./M ²
Altezza · <i>Width</i>	140 cm
Martindale	40.000 cicli · <i>cycles</i>
FR Normative FR Standards	EN 1021 - 1 AND 1021 - 2 PASS ON FR FOAM CIGARETTE TEST: PASS IMO MSC 307(88) FTP PART 8 – UPHOLSTERY – PASS

 << **Scheda Tecnica**
Data Sheet

ISTRUZIONI DI LAVAGGIO · *CARE*



Cat. B F 9056

Composizione · <i>Composition</i>	100% FR POLYPROPYLENE
Peso · <i>Weight</i>	370 Gr./M ²
Altezza · <i>Width</i>	140 cm
Martindale	35.000 cicli · <i>cycles</i>
FR Normative FR Standards	UNI 8456 - 9174 - CLASS 1 - ITALIAN FIRE SAFETY CLASSIFICATION - PASS BS EN 1021.1: 1994 - SOURCE 0 - CIGARETTE TEST - PASS BS EN 1021.2: 1994 - SOURCE 1 - BUTANE FLAME - PASS ON FR FOAM T.B. 117 (2013): SECTION 1 POSITIVE B1 ACCORDING TO DIN 4102, PART 1 (MAY 1998)


 << **Scheda Tecnica**
Data Sheet

ISTRUZIONI DI LAVAGGIO · *CARE*




Cat. C DHARMA BARRÈ 601

Composizione · <i>Composition</i>	97% POLYPROPYLENE 3% POLYESTER OUTDOOR FR
Peso · <i>Weight</i>	950 (+/-5%) G./MI
Altezza · <i>Width</i>	140 cm (+/-3%)
Solidità alle intemperie - Test alla luce · <i>Colour fastness to weathering – Xenon test</i>	≥ 7
Abrasiono Martindale · <i>Abrasion Martindale</i> Reazione al fuoco · <i>Fire Behavior</i>	≥ 50.000 giri · <i>rubs</i> CALIFORNIA BULLETIN TB 117:2013: PASS


 << **Scheda Tecnica**
Data Sheet

ISTRUZIONI DI LAVAGGIO · *CARE*




Cat. C DHARMA BARRÈ 401

Composizione · <i>Composition</i>	70% POLYPROPYLENE 30% POLYESTER OUTDOOR FR
Peso · <i>Weight</i>	740 (+/-5%) G./MI
Altezza · <i>Width</i>	140 cm (+/-3%)
Solidità alle intemperie - Test alla luce · <i>Colour fastness to weathering – Xenon test</i>	≥ 7
Abrasiono Martindale · <i>Abrasion Martindale</i> Reazione al fuoco · <i>Fire Behavior</i>	≥ 60.000 giri · <i>rubs</i> CALIFORNIA BULLETIN TB 117:2013: PASS

 << **Scheda Tecnica**
Data Sheet

ISTRUZIONI DI LAVAGGIO · *CARE*



Cat. B CASANOVA 1536

Composizione · <i>Composition</i>	100% POLYPROPYLENE
Peso · <i>Weight</i>	630 (+/-4%) Gr./Mtl
Peso · <i>Weight</i>	450 (+/-4%) Gr./MQ
Altezza · <i>Width</i>	140 cm
Martindale	65.000 cicli · <i>cycles</i>
Luce · <i>Artificial light</i>	7
Resistenza al pilling · <i>Pilling resistance</i>	4

 << **Scheda Tecnica**
Data Sheet

ISTRUZIONI DI LAVAGGIO · *CARE*



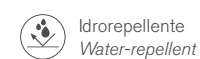
Cat. B CASANOVA 1539

Composizione · <i>Composition</i>	100% POLYPROPYLENE
Peso · <i>Weight</i>	810 (+/-4%) Gr./Mtl
Peso · <i>Weight</i>	580 (+/-4%) Gr./MQ
Altezza · <i>Width</i>	140 cm
Martindale	40.000 cicli · <i>cycles</i>
Luce · <i>Artificial light</i>	7
Resistenza al pilling · <i>Pilling resistance</i>	4

 << **Scheda Tecnica**
Data Sheet

ISTRUZIONI DI LAVAGGIO · *CARE*





Idrorepellente
Water-repellent



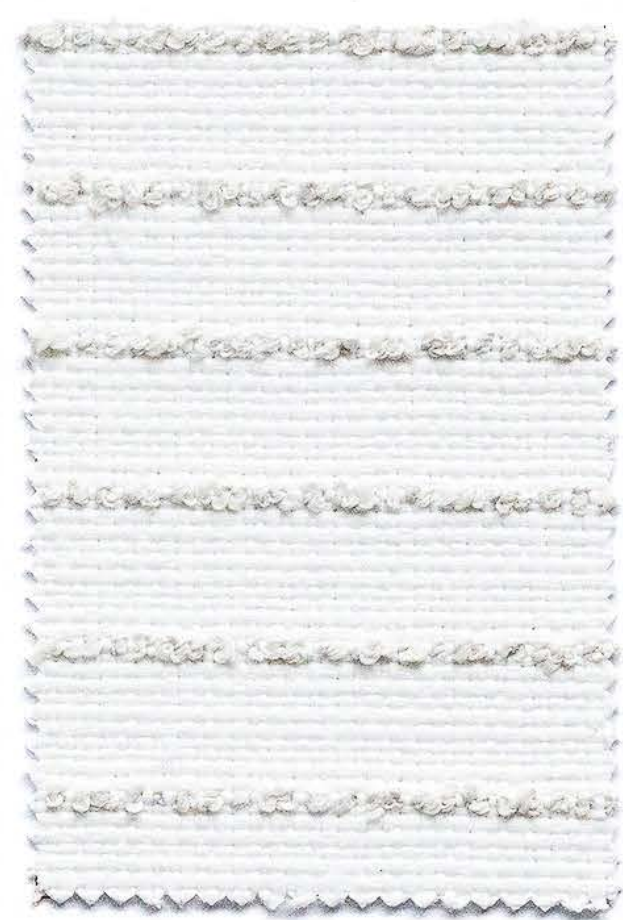
Ignifugo (vedi certificazioni e normative)
Flame retardant (see specific standards)



Riciclato
Recycled



CAT. B **FO001** F 9056 COL. T38/1



CAT. B **MA020** M STRIPE 201 COL. 38/1



CAT. C **CC179** OLD PANAMAO A4100



CAT. C **CC181** CAPUAL A4200



CAT. B **RE001** REEF 0100



CAT. B **FO002** F 9056 COL. T0/1



CAT. B **RE003** REEF 0007



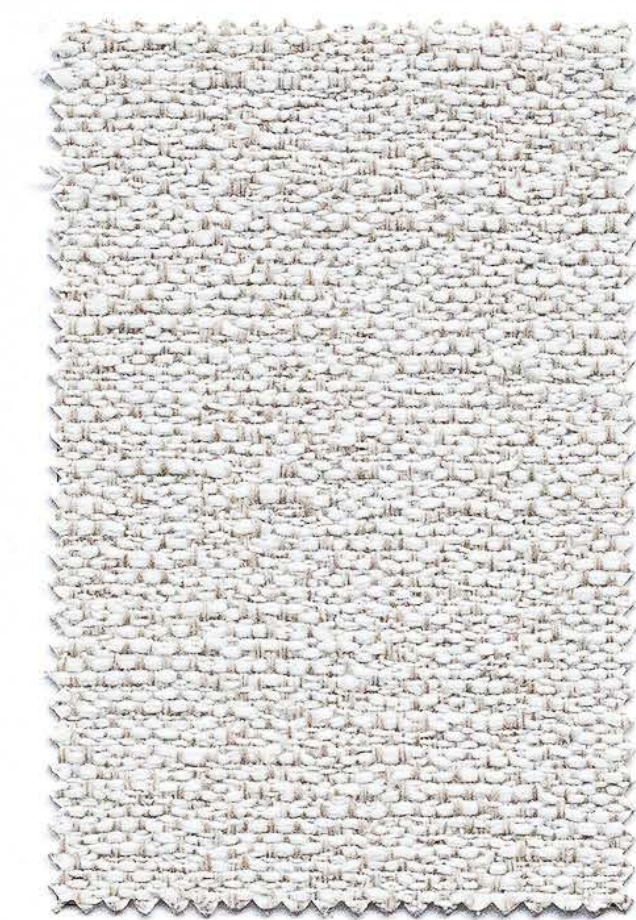
CAT. B **RE002** REEF 0025



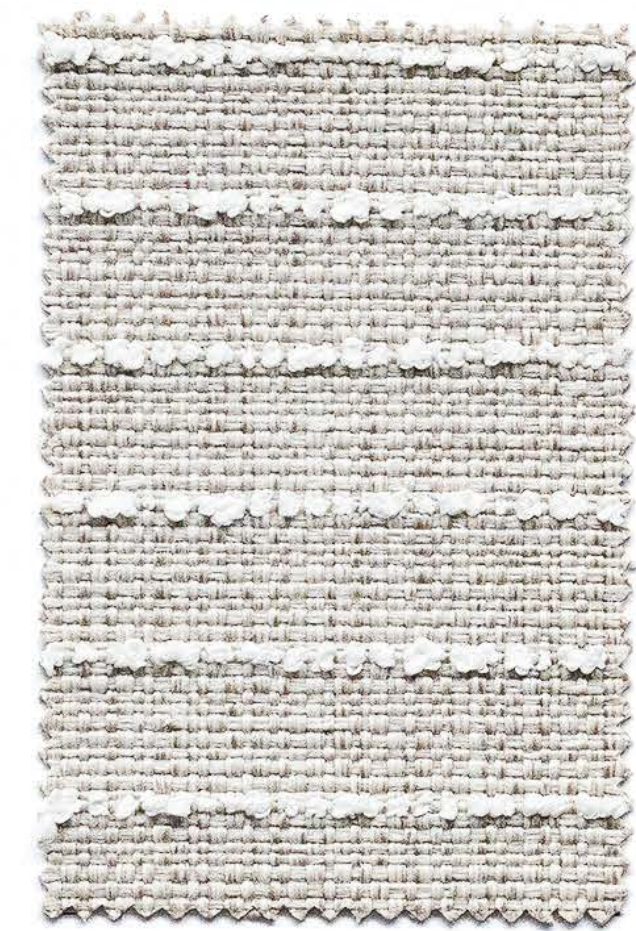
CAT. C **CC300** DELTA 03



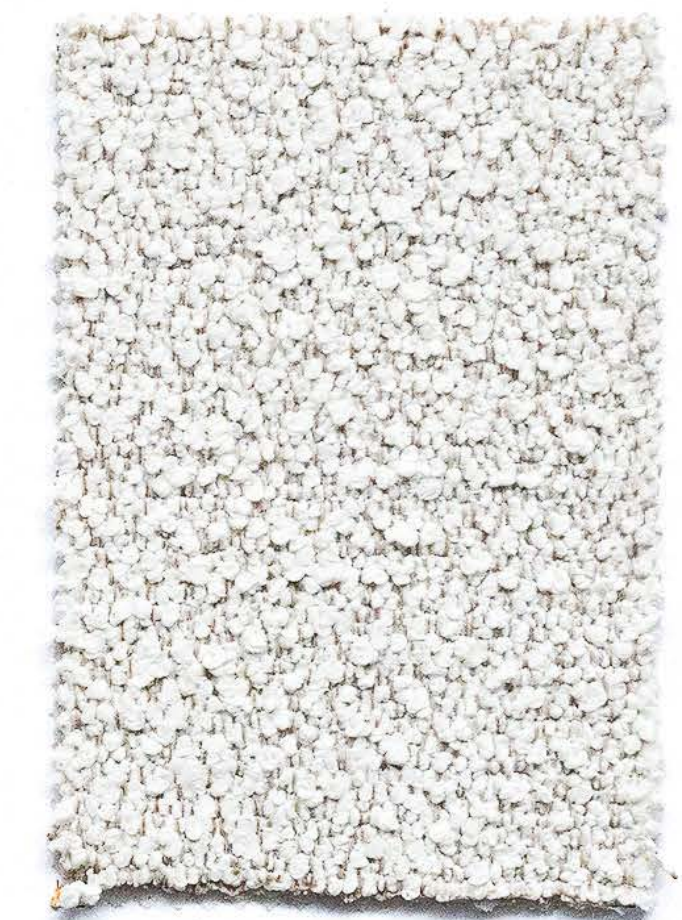
CAT. B **CB025** CASANOVA 1539 COL. 07



CAT. B **FO003** F 9056 COL. T79/2



CAT. B **MA021** M STRIPE 201 COL. T79/1



CAT. C **MA001** MS 52 COL. T79/1



CAT. C **CC182** OLD PANAMAO A4101

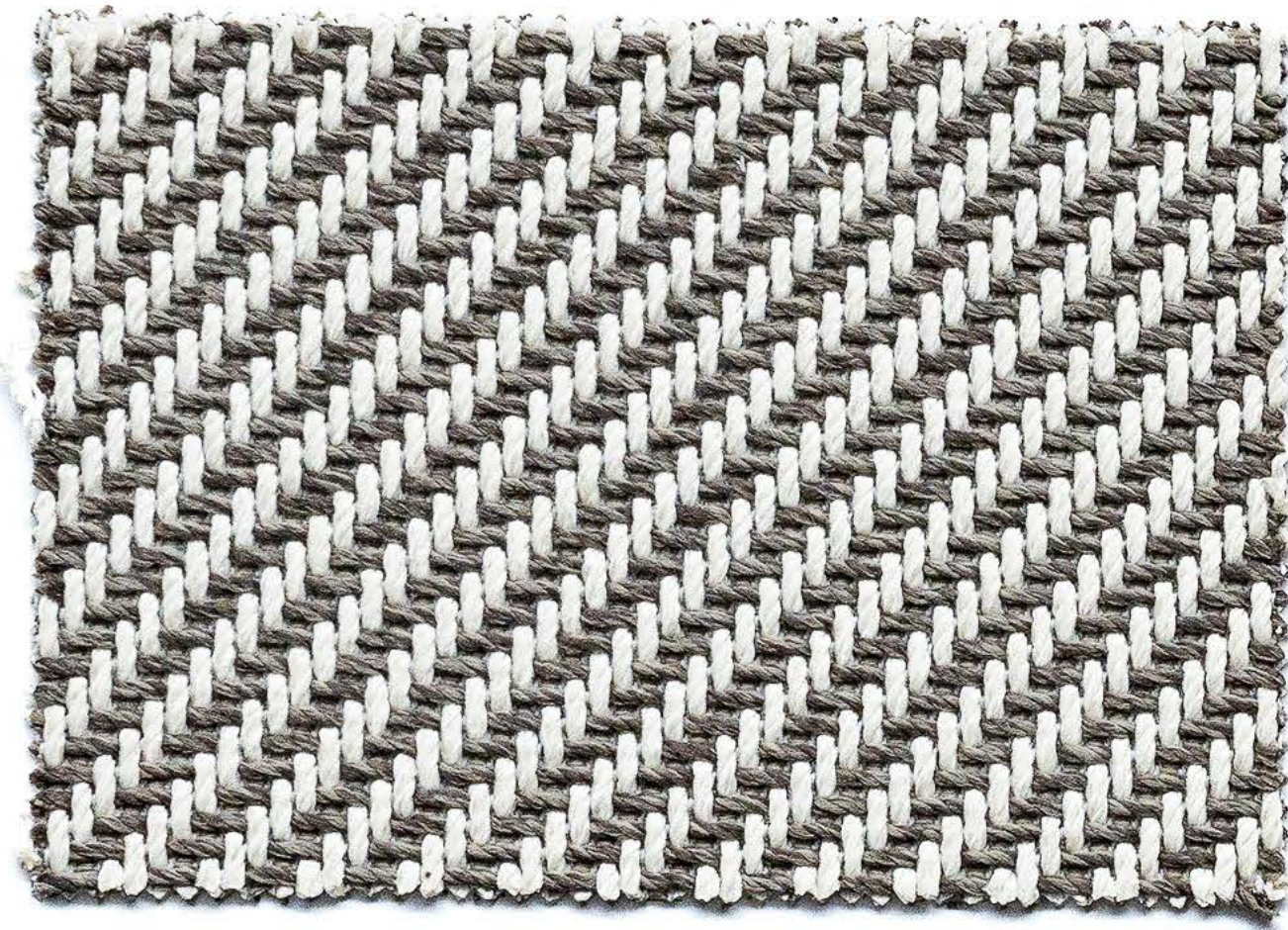


CAT. C **CC180** CAPUAL A4201

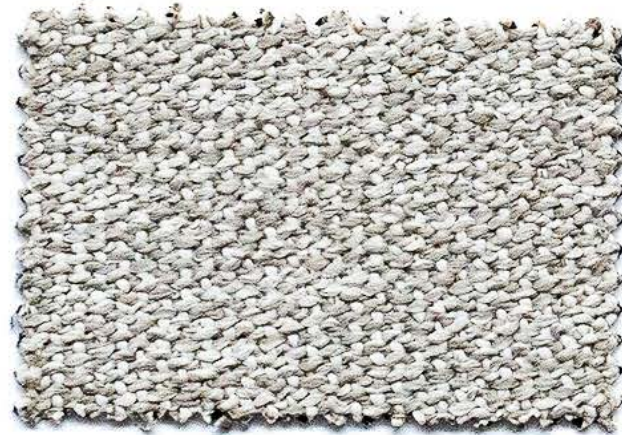


CAT. C **DH100** DHARMA BARRÈ 601

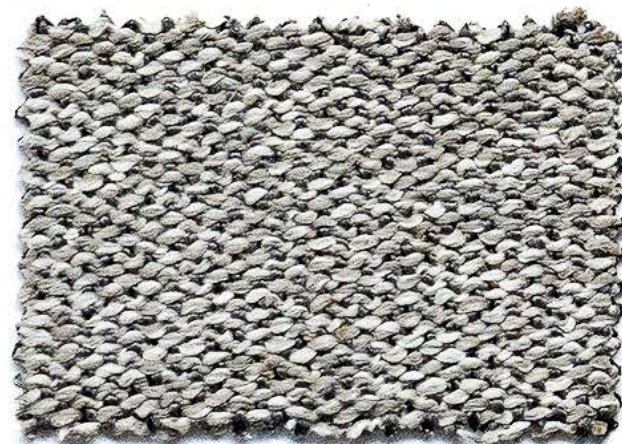




CAT. C **HE001** HERBIG 33



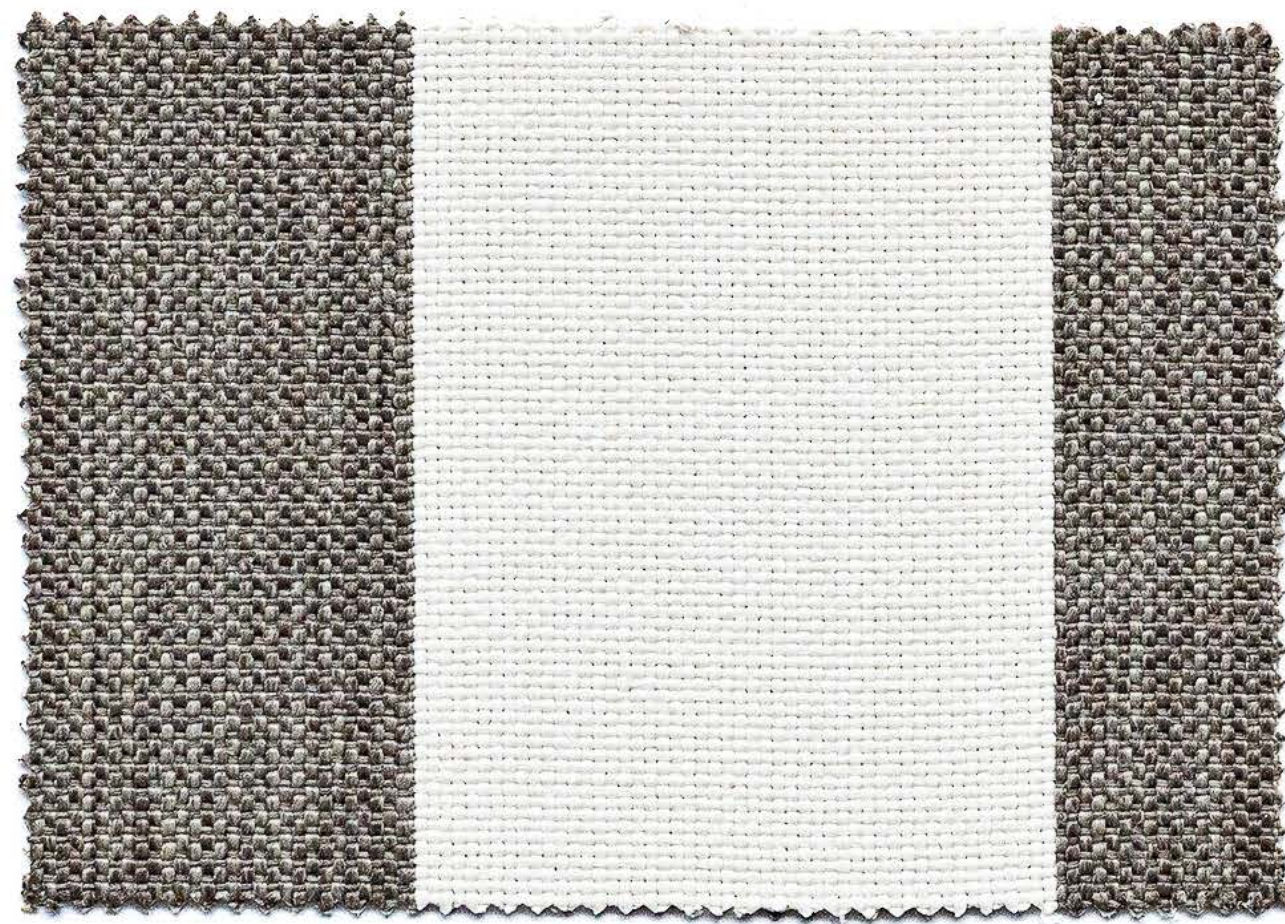
CAT. C **CC307** DELTA 01



CAT. C **CC306** DELTA 90



CAT. C **BL001** BLAZE 04



CAT. B **NE001** NEW SANTANDER 06



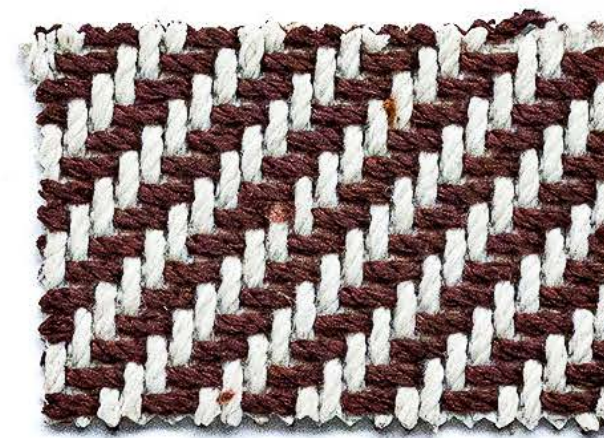
CAT. C **CC302** DELTA 45



CAT. C **CC301** DELTA 02



CAT. C **BL002** BLAZE 09



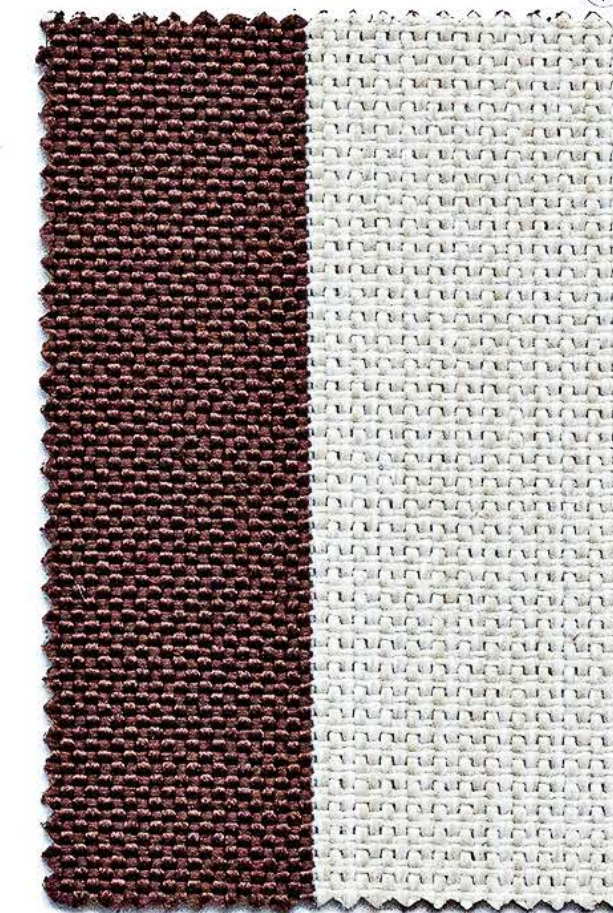
CAT. C **HE002** HERBIG 31



CAT. C **CC303** DELTA 01/1



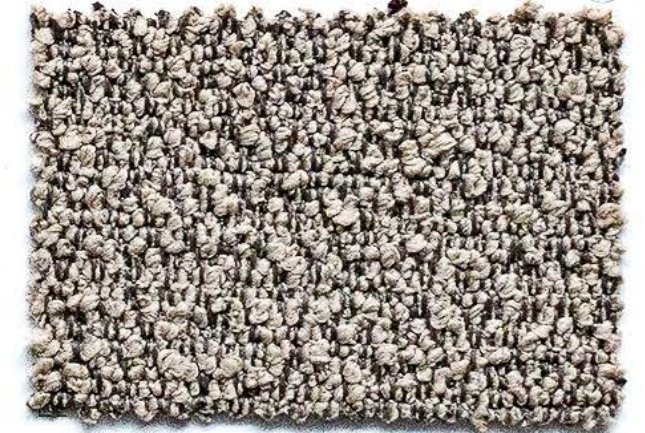
CAT. C **DH001** DHARMA BARRÉ 401



CAT. B **NE002** NEW SANTANDER 05



CAT. C **MA003** MS 52 COL. T0/1



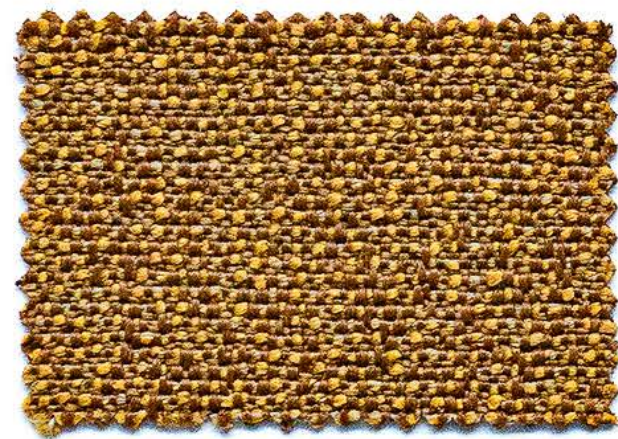
CAT. C **MA002** MS 52 COL. T101/4



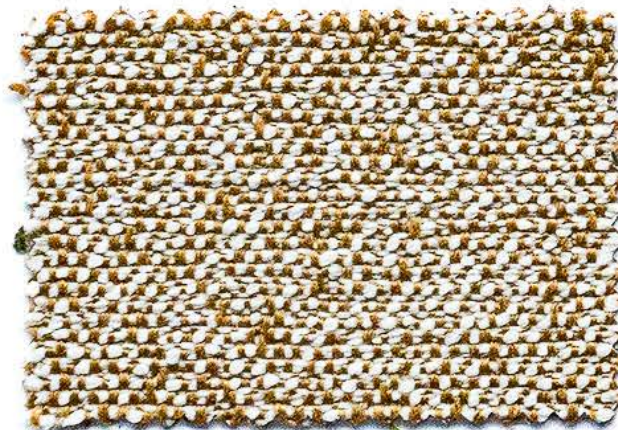
CAT. B MA022 M STRIPE 201 COL. 23/7



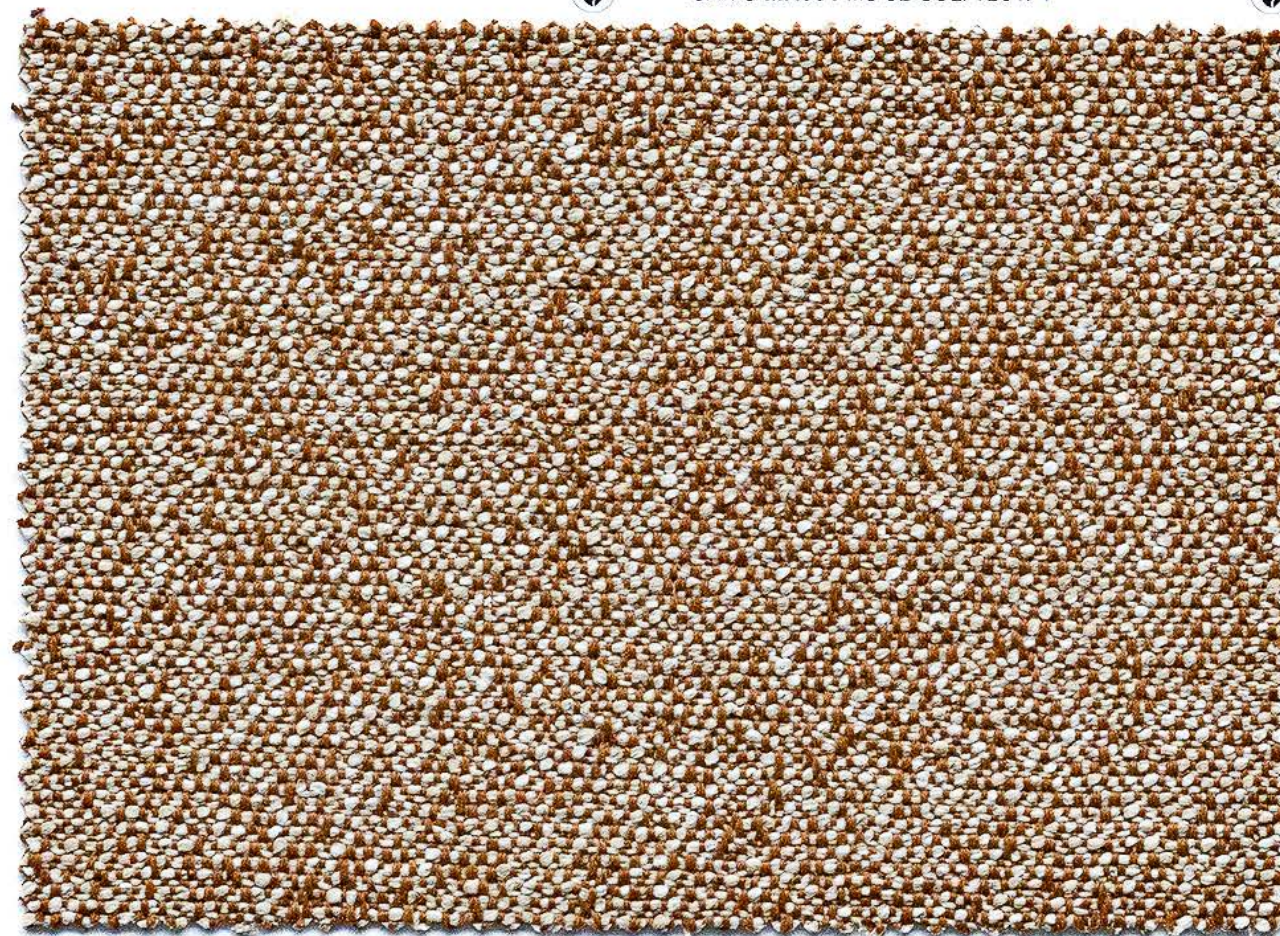
CAT. C MA004 MS 52 COL. T201/4



CAT. C CC202 ALTAI 12/15



CAT. C CC204 ALTAI 12/5



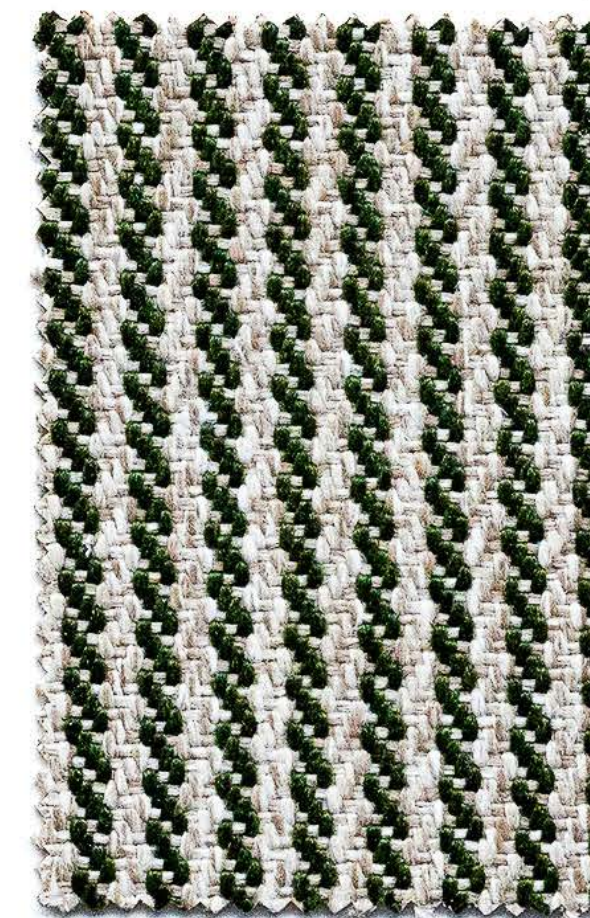
CAT. C CC203 ALTAI 16/4



CAT. C MA005 MS 52 COL. T17/3



CAT. B MA023 M STRIPE 201 COL. 23/1



CAT. B CB022 CASANOVA 1539 COL. 11



CAT. B CB031 CASANOVA 1536 COL. 11



CAT. B FO004 F 9056 COL. T50/1



CAT. C **CC183** OLD PANAMAO A4104



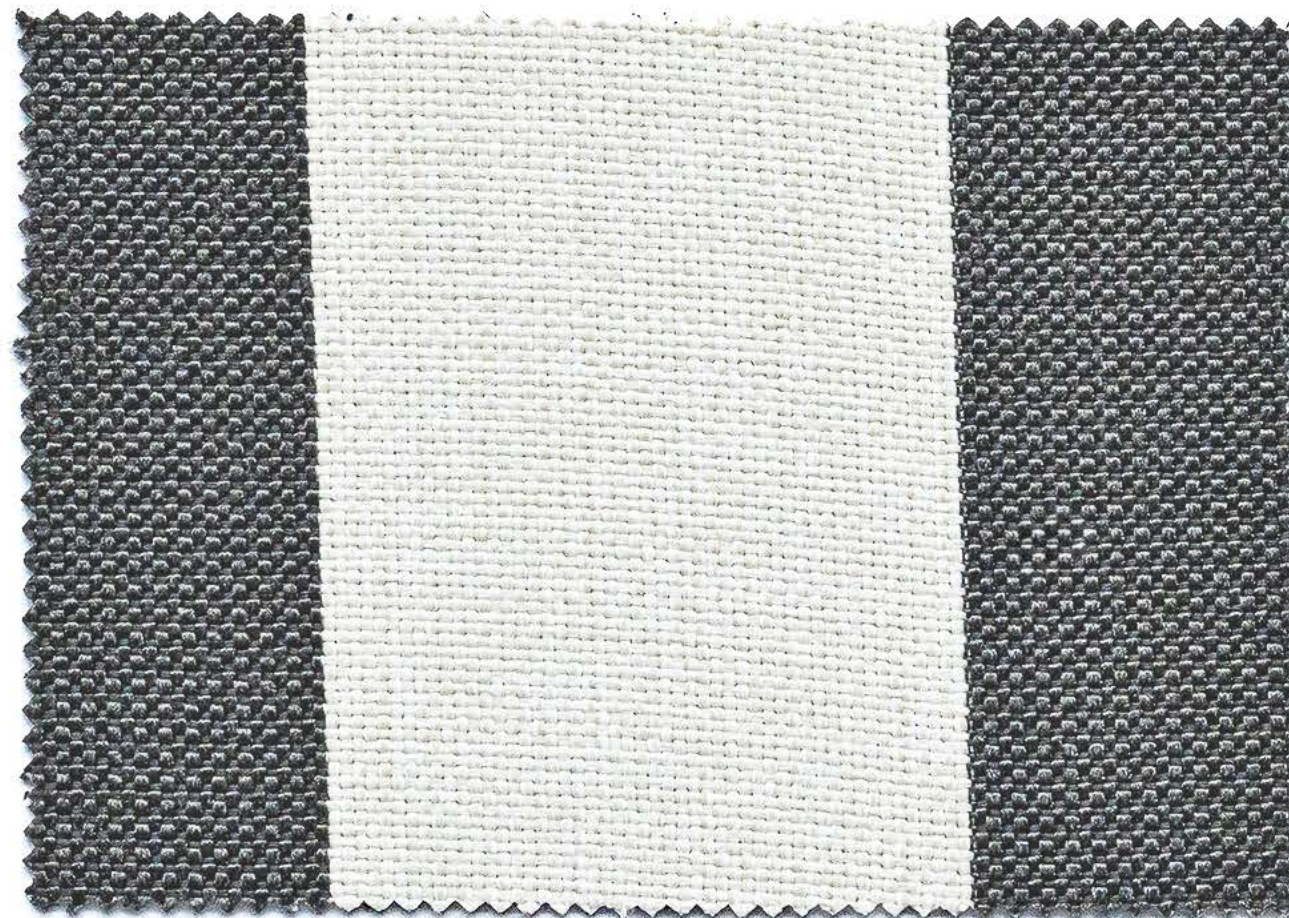
CAT. C **CC184** OLD PANAMAO A4105



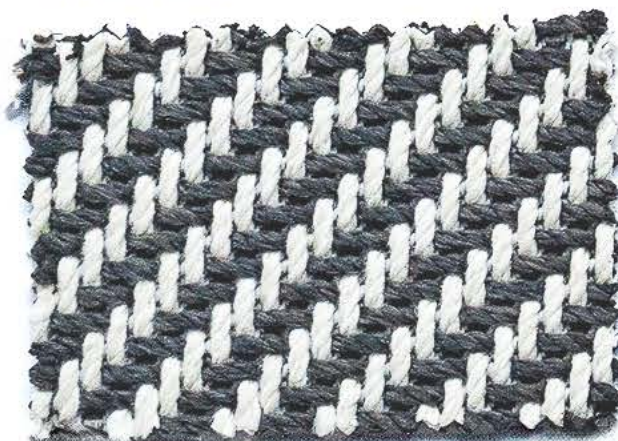
CAT. C **CC305** DELTA 01/5



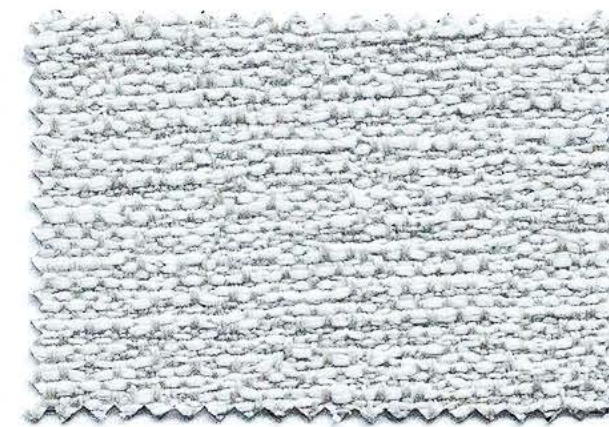
CAT. C **BL003** BLAZE 03



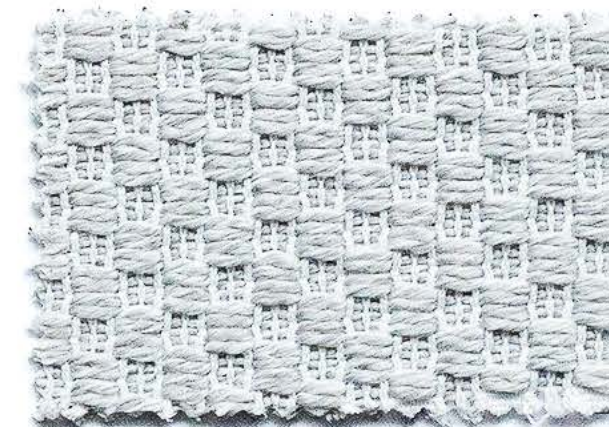
CAT. B **NE003** NEW SANTANDER 11



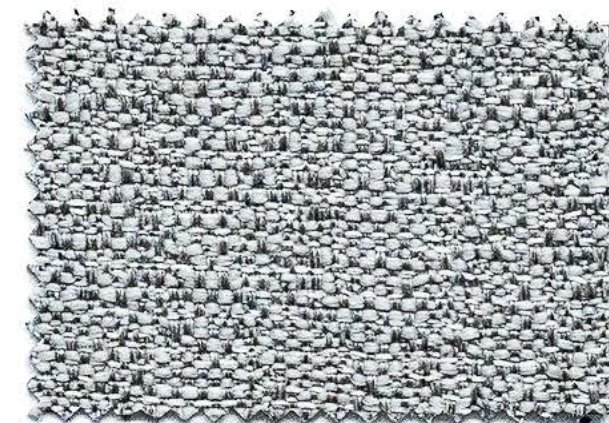
CAT. C **HE003** HERBIG 30



CAT. B **FO006** F 9056 COL. T39/1



CAT. B **RE004** REEF 0031



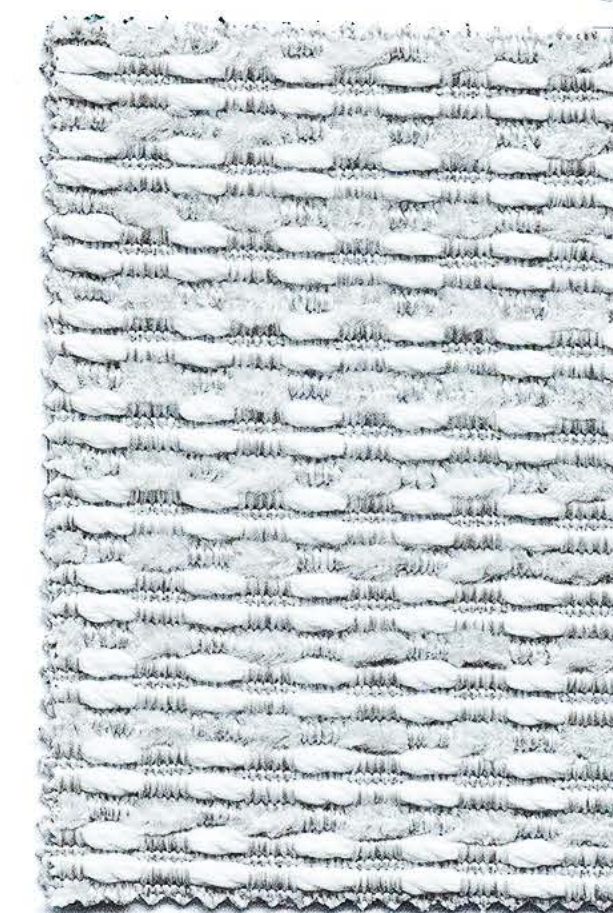
CAT. B **FO007** F 9056 COL. T29/1



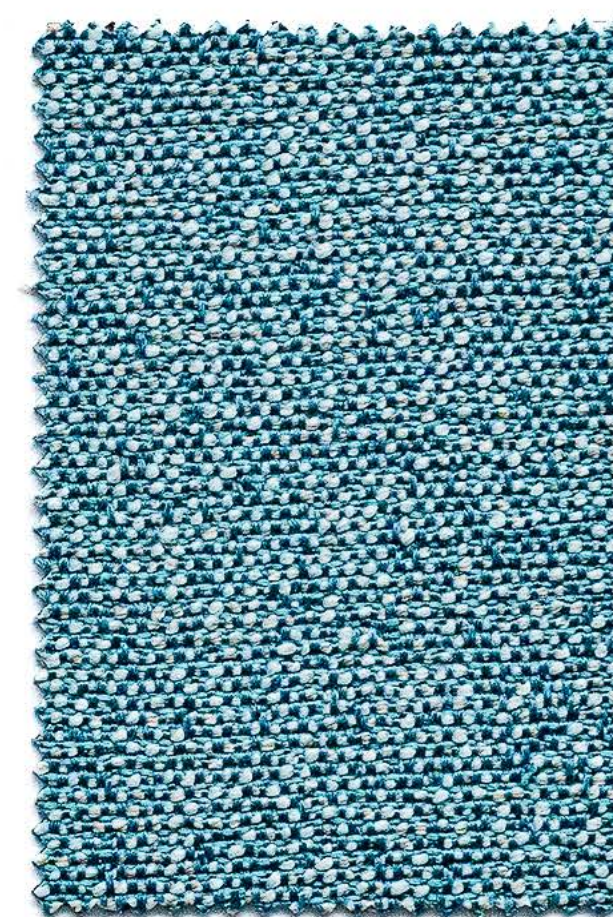
CAT. C **CC178** OLD PANAMAO A4109



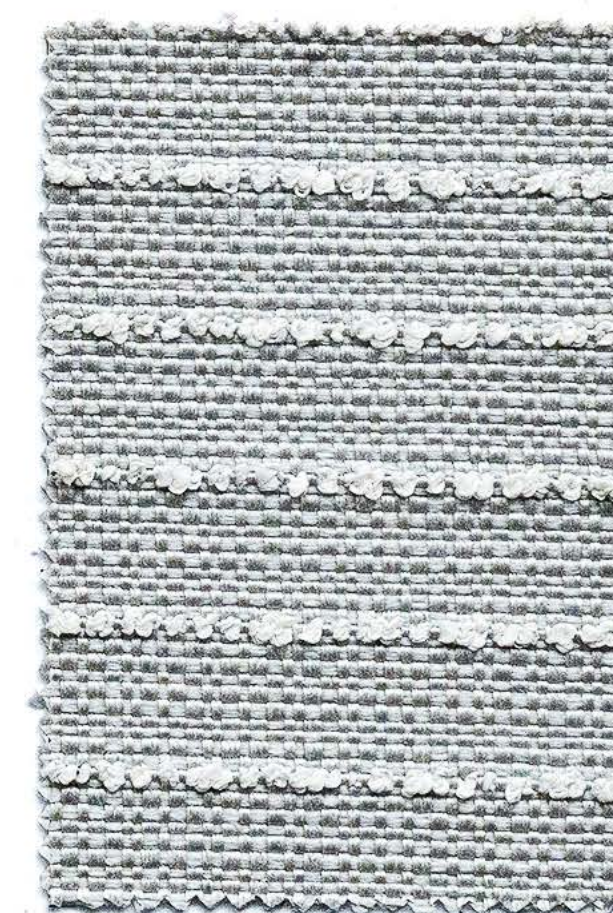
CAT. B **FO005** F 9056 COL. T85/3



CAT. C **CC177** CAPUAL A4209



CAT. C **CC201** ALTAI 21/26



CAT. B **MA024** M STRIPE 201 COL. 39/4



CAT.

.IT
TESSUTI LUXURY ACRILICI
.EN
LUXURY ACRYLIC FABRICS

Cat. C ERFUOD

Composizione · *Composition* 100% solution-dyed acrylic
 Peso · *Weight* 630 gr/m
 Altezza · *Width* 140 cm
 Martindale 50.000 cicli · *cycles*
 Solidità alla luce · *Light fastness* 7/8

Utilizzo interno ed esterno, idrorepellente, antimacchia, antimuffa, trasparente, lavabile con candeggina, elevata resistenza all'abrasione, colori resistenti alla luce, antiscolorimento.
In-outdoor use, water repellent, stain resistant, mould resistant, breathable, bleach cleanable, high abrasion resistant, colour fast to light, fade proof.

Performance
 Utilizzi consigliati · *Recommended Uses*



<< **Scheda Tecnica**
Data Sheet

ISTRUZIONI DI LAVAGGIO · *CARE*



Cat. C FALESIA

Composizione · *Composition* 100% solution-dyed acrylic
 Peso · *Weight* 930 gr/m
 Altezza · *Width* 138 cm
 Martindale 50.000 cicli · *cycles*
 Solidità alla luce · *Light fastness* 7/8

Utilizzo interno ed esterno, idrorepellente, antimacchia, antimuffa, trasparente, lavabile con candeggina, elevata resistenza all'abrasione, colori resistenti alla luce, antiscolorimento.
In-outdoor use, water repellent, stain resistant, mould resistant, breathable, bleach cleanable, high abrasion resistant, colour fast to light, fade proof.

Performance
 Utilizzi consigliati · *Recommended Uses*



<< **Scheda Tecnica**
Data Sheet

ISTRUZIONI DI LAVAGGIO · *CARE*



Cat. C KOLYMBETRA

Composizione · *Composition* 100% solution-dyed acrylic
 Peso · *Weight* 850 gr/m
 Altezza · *Width* 140 cm
 Martindale 20.000 cicli · *cycles*
 Solidità alla luce · *Light fastness* 7/8

Utilizzo interno ed esterno, idrorepellente, antimacchia, antimuffa, trasparente, lavabile con candeggina, elevata resistenza all'abrasione, colori resistenti alla luce, antiscolorimento.
In-outdoor use, water repellent, stain resistant, mould resistant, breathable, bleach cleanable, high abrasion resistant, colour fast to light, fade proof.

Performance
 Utilizzi consigliati · *Recommended Uses*



<< **Scheda Tecnica**
Data Sheet

ISTRUZIONI DI LAVAGGIO · *CARE*



Cat. C ONDA

Composizione · *Composition* 100% solution-dyed acrylic
 Peso · *Weight* 880 gr/m
 Altezza · *Width* 138 cm
 Martindale 35.000 cicli · *cycles*
 Solidità alla luce · *Light fastness* 7/8

Utilizzo interno ed esterno, idrorepellente, antimacchia, antimuffa, trasparente, lavabile con candeggina, elevata resistenza all'abrasione, colori resistenti alla luce, antiscolorimento.
In-outdoor use, water repellent, stain resistant, mould resistant, breathable, bleach cleanable, high abrasion resistant, colour fast to light, fade proof.

Performance
 Utilizzi consigliati · *Recommended Uses*



<< **Scheda Tecnica**
Data Sheet

ISTRUZIONI DI LAVAGGIO · *CARE*



Cat. C SPUGNA

Composizione · *Composition* 100% solution-dyed acrylic
 Peso · *Weight* 1360 gr/m
 Altezza · *Width* 140 cm
 Martindale 50.000 cicli · *cycles*
 Solidità alla luce · *Light fastness* 7/8

Utilizzo interno ed esterno, idrorepellente, antimacchia, antimuffa, trasparente, lavabile con candeggina, elevata resistenza all'abrasione, colori resistenti alla luce, antiscolorimento.
In-outdoor use, water repellent, stain resistant, mould resistant, breathable, bleach cleanable, high abrasion resistant, colour fast to light, fade proof.

Performance
 Utilizzi consigliati · *Recommended Uses*



<< **Scheda Tecnica**
Data Sheet

ISTRUZIONI DI LAVAGGIO · *CARE*



Cat. C ZAGORA

Composizione · *Composition* 100% solution-dyed acrylic
 Peso · *Weight* 830 gr/m
 Altezza · *Width* 140 cm
 Martindale 50.000 cicli · *cycles*
 Solidità alla luce · *Light fastness* 7/8

Utilizzo interno ed esterno, idrorepellente, antimacchia, antimuffa, trasparente, lavabile con candeggina, elevata resistenza all'abrasione, colori resistenti alla luce, antiscolorimento.
In-outdoor use, water repellent, stain resistant, mould resistant, breathable, bleach cleanable, high abrasion resistant, colour fast to light, fade proof.




Performance
 Utilizzi consigliati · *Recommended Uses*



<< **Scheda Tecnica**
Data Sheet

ISTRUZIONI DI LAVAGGIO · *CARE*



-  Idrorepellente
Water-repellent
-  Ignifugo (vedi certificazioni e normative)
Flame retardant (see specific standards)
-  Riciclato
Recycled

Cat. C LOP

Composizione · *Composition* 100% Sunbrella Acrylic · Non PFAS
 Finissaggio · *Backing / Finish* Idrorepellente antimacchia
Water-repellent & Stain-proof

Peso · *Weight* 680 g/m²
 Altezza · *Width* 140 cm
 Solidità colori agli UV - esterno - 1000h
Colour fastness UV - outdoor - 1000h

Utilizzo interno ed esterno, idrorepellente, antimacchia, antimuffa, trasparente, lavabile con candeggina, elevata resistenza all'abrasione, colori resistenti alla luce, antiscolorimento.
In-outdoor use, water repellent, stain resistant, mould resistant, breathable, bleach cleanable, high abrasion resistant, colour fast to light, fade proof.

Performance
 Utilizzi consigliati · *Recommended Uses*



<< **Scheda Tecnica**
Data Sheet

ISTRUZIONI DI LAVAGGIO · *CARE*



Sedute portanti, cuscini da decoro
Seating, cushions

Cat. C HER


Composizione · *Composition* 50% Riciclato Sunbrella Acrilico, 47% Sunbrella Acrilico, 3% Poliestere
 50% *Recycled Sunbrella, Acrylic 47% Sunbrella Acrylic, 3% Polyester*

Finissaggio · *Backing / Finish* Non PFAS - Idrorepellente antimacchia · *Water-repellent & Stain-proof*

Peso · *Weight* 335 g/m²
 Altezza · *Width* 140 cm
 Solidità colori agli UV - esterno - 1000h
Colour fastness UV - outdoor - 1000h


Utilizzo interno ed esterno, idrorepellente, antimacchia, antimuffa, trasparente, lavabile con candeggina, elevata resistenza all'abrasione, colori resistenti alla luce, antiscolorimento.
In-outdoor use, water repellent, stain resistant, mould resistant, breathable, bleach cleanable, high abrasion resistant, colour fast to light, fade proof.

Performance
 Utilizzi consigliati · *Recommended Uses*



<< **Scheda Tecnica**
Data Sheet

ISTRUZIONI DI LAVAGGIO · *CARE*



Sedute portanti, cuscini da decoro
Seating, cushions

Cat. C SLO


Composizione · *Composition* 33% Riciclato Sunbrella Acrilico, 65% Sunbrella Acrilico, 2% Poliestere
 33% *Recycled Sunbrella, Acrylic 65% Sunbrella Acrylic, 2% Polyester*

Finissaggio · *Backing / Finish* Non PFAS - Idrorepellente antimacchia · *Water-repellent & Stain-proof*

Peso · *Weight* 470 g/m²
 Altezza · *Width* 140 cm
 Solidità colori agli UV - esterno - 1000h
Colour fastness UV - outdoor - 1000h


Utilizzo interno ed esterno, idrorepellente, antimacchia, antimuffa, trasparente, lavabile con candeggina, elevata resistenza all'abrasione, colori resistenti alla luce, antiscolorimento.
In-outdoor use, water repellent, stain resistant, mould resistant, breathable, bleach cleanable, high abrasion resistant, colour fast to light, fade proof.

Performance
 Utilizzi consigliati · *Recommended Uses*






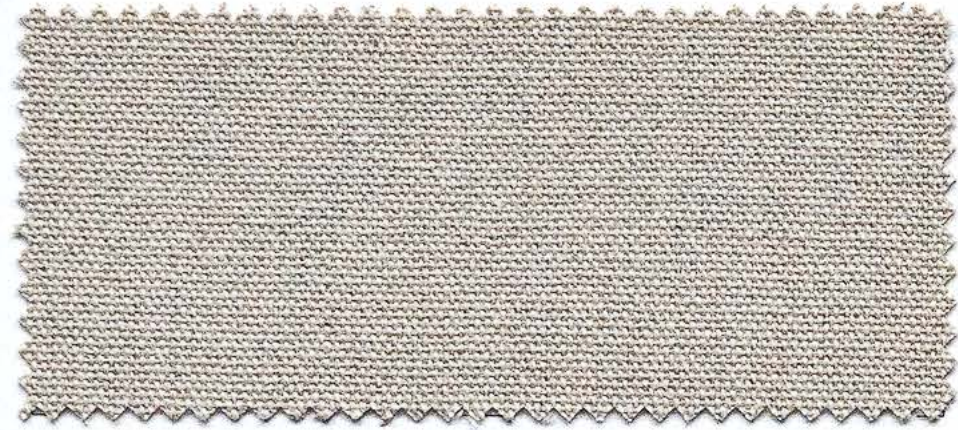
<< **Scheda Tecnica**
Data Sheet

ISTRUZIONI DI LAVAGGIO · *CARE*

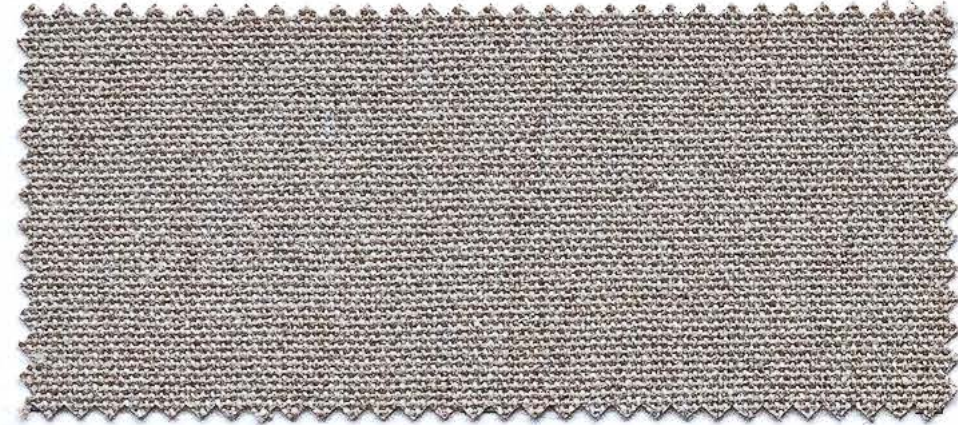


Sedute portanti, cuscini da decoro
Seating, cushions

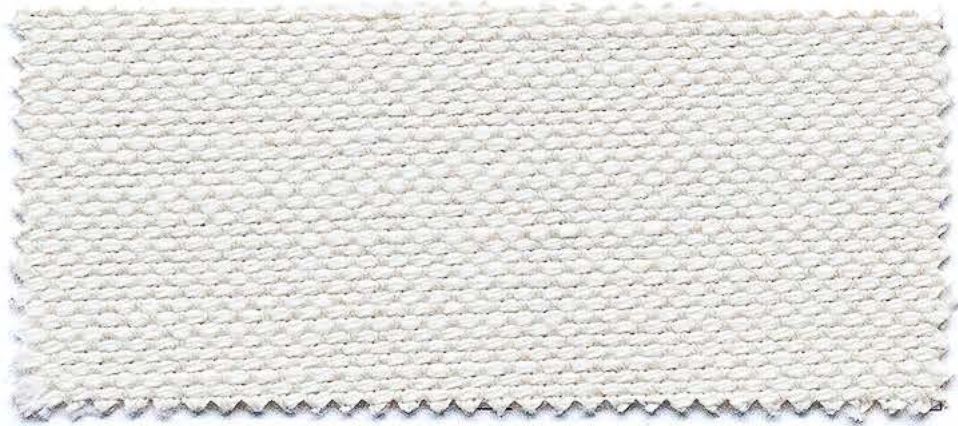
-  Idrorepellente
Water-repellent
-  Ignifugo (vedi certificazioni e normative)
Flame retardant (see specific standards)
-  Riciclato
Recycled



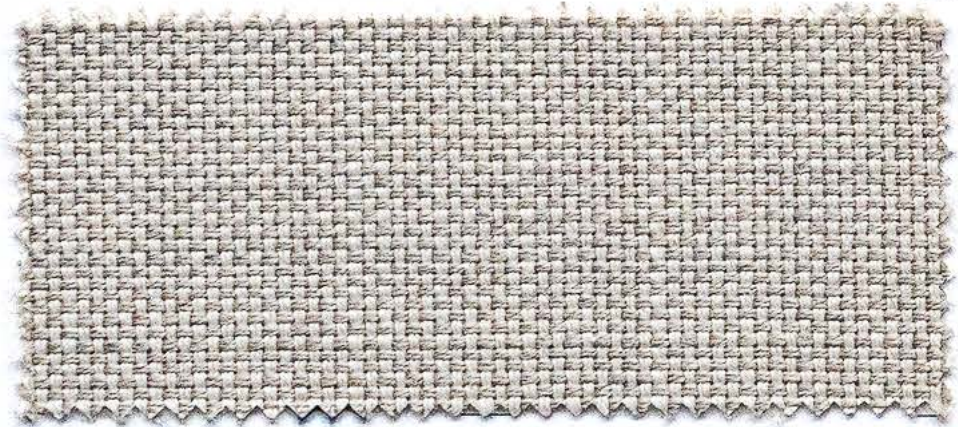
CAT. C **CC081** HER 18006 PAPHYRUS



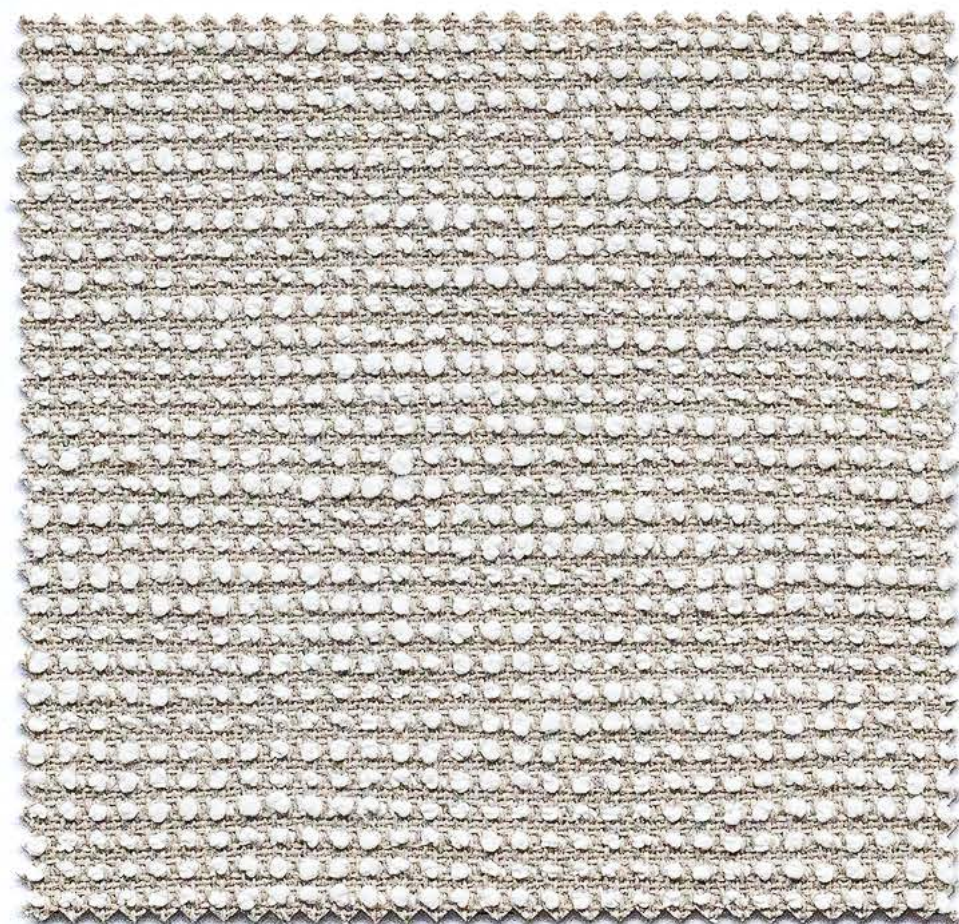
CAT. C **CC080** HER 18001 ASH



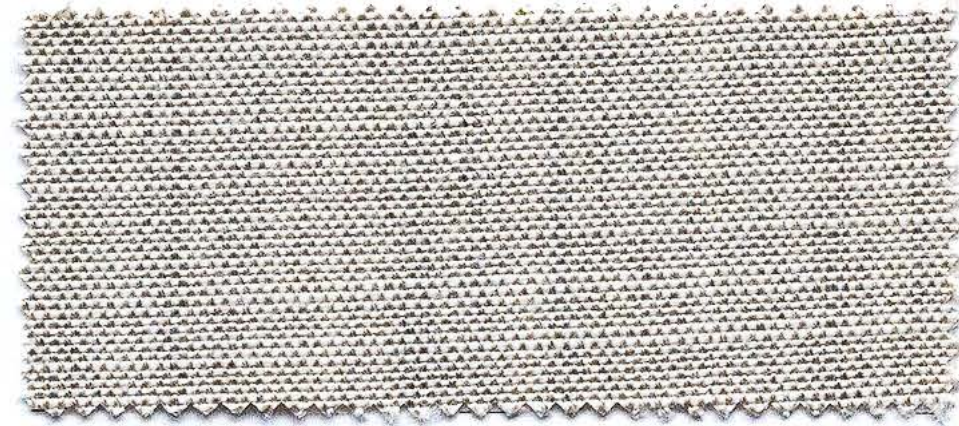
CAT. C **CC128** ZAGORA 9315



CAT. C **CC129** ZAGORA 93102



CAT. C **CC256** SLO 19101 FARAFRA



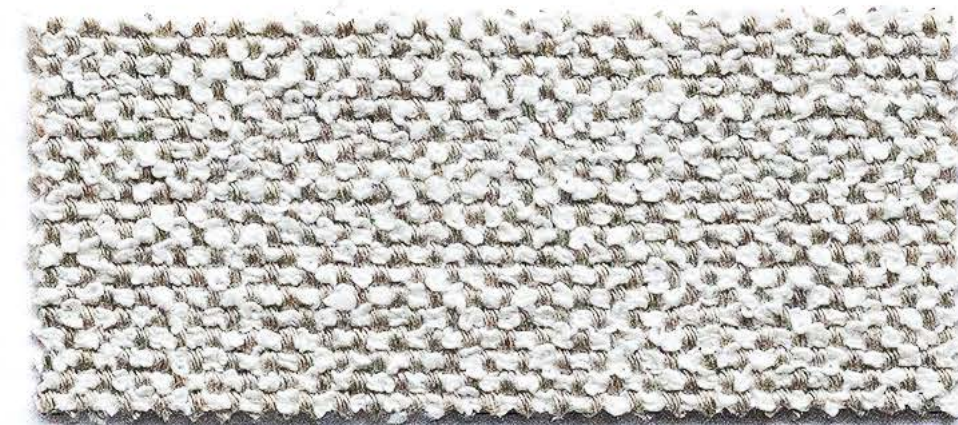
CAT. C **CC120** ERFOUD 10215



CAT. C **CC220** LOP R018 MARBLE



CAT. C **CC221** LOP R033 SNOW



CAT. C **CC140** SPUGNA 20



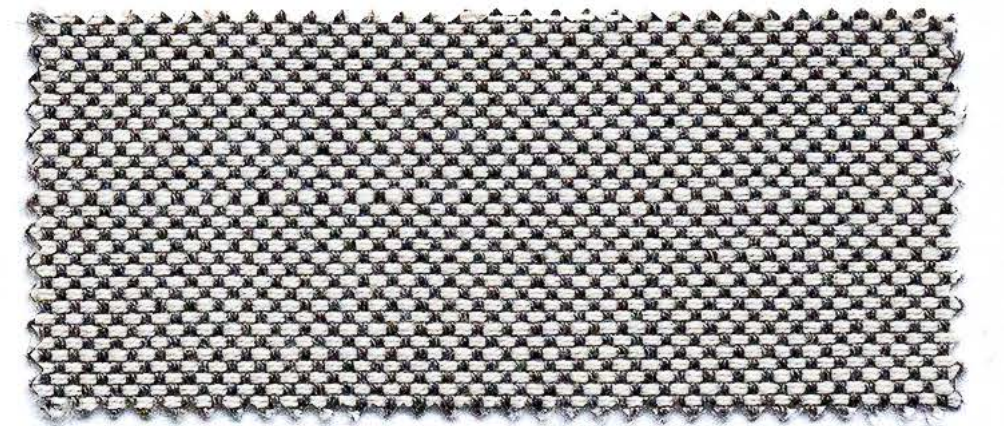
CAT. C **ON001** ONDA 20



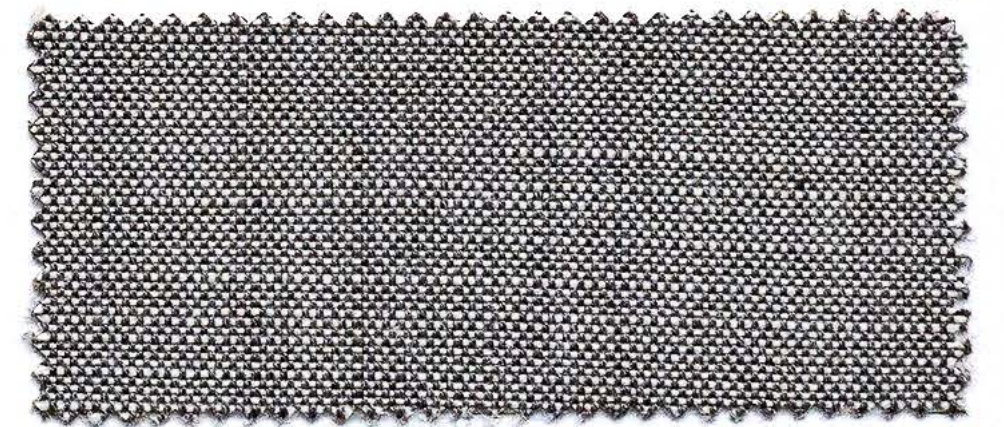
CAT. C **FA001** FALESIA 20



CAT. C **KO001** KOLYMBETRA 20

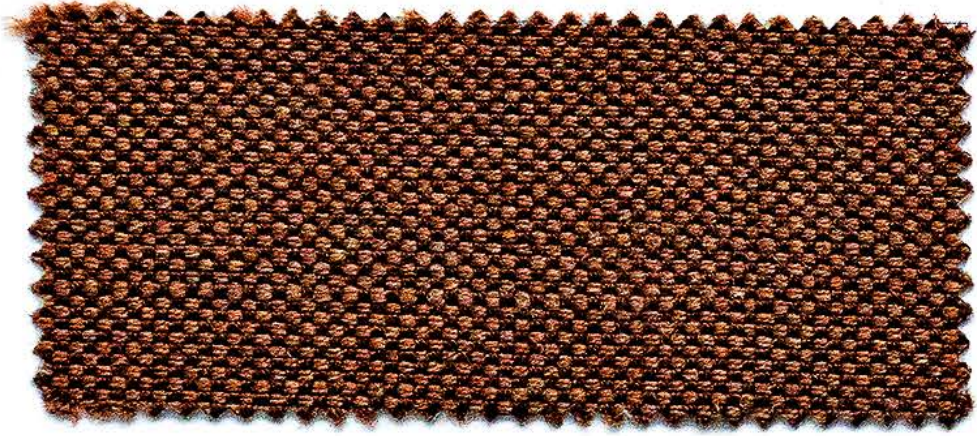



CAT. C **CC135** ZAGORA 92693

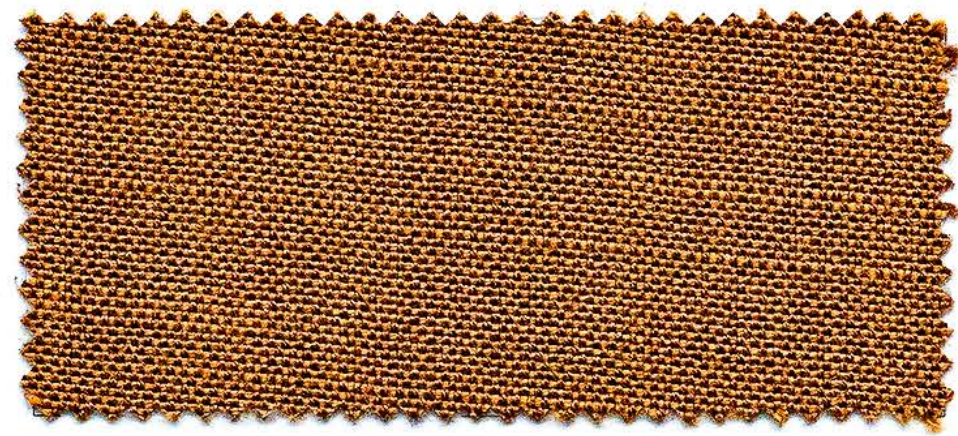


CAT. C **CC123** ERFOUD 92693

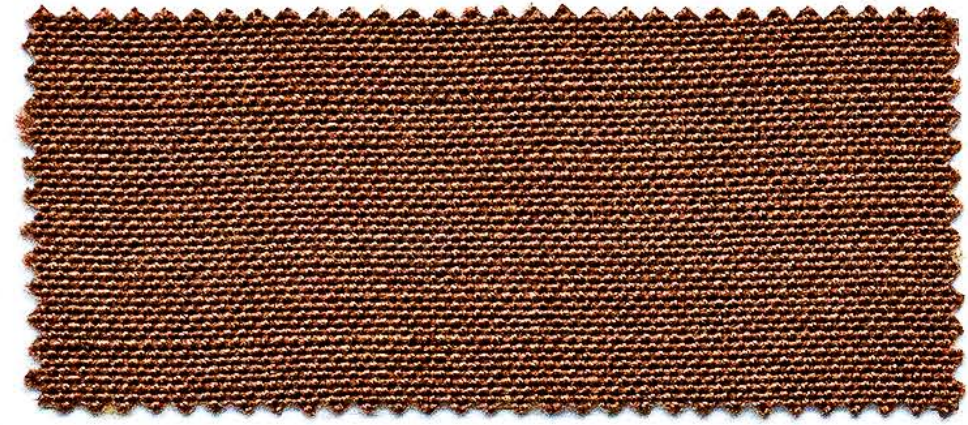




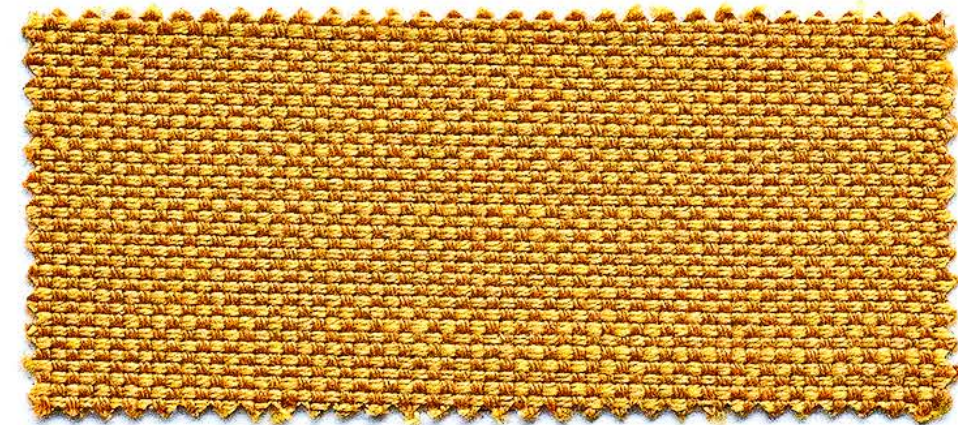
CAT. C **CC136** ZAGORA 62 



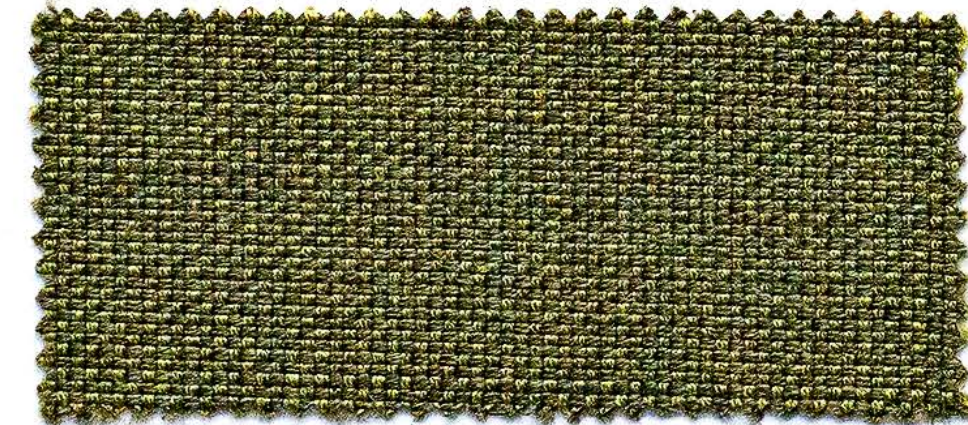
CAT. C **CC195** ERFOUD 18062 



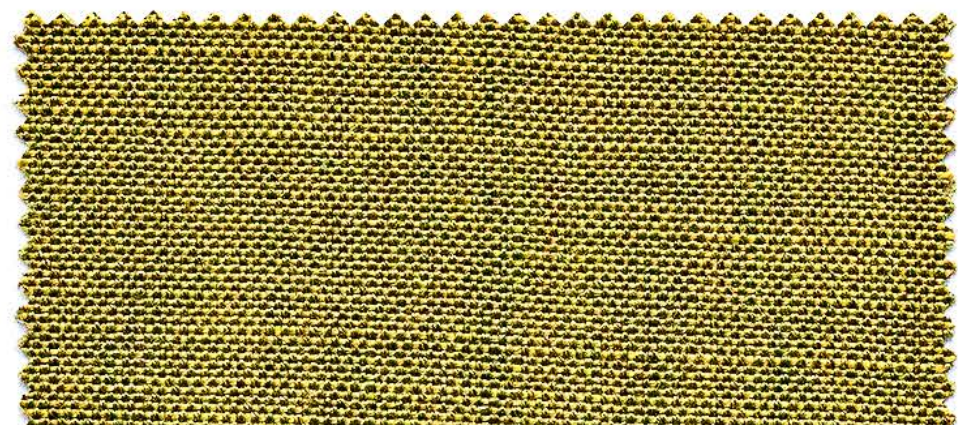
CAT. C **CC190** ERFOUD 62 



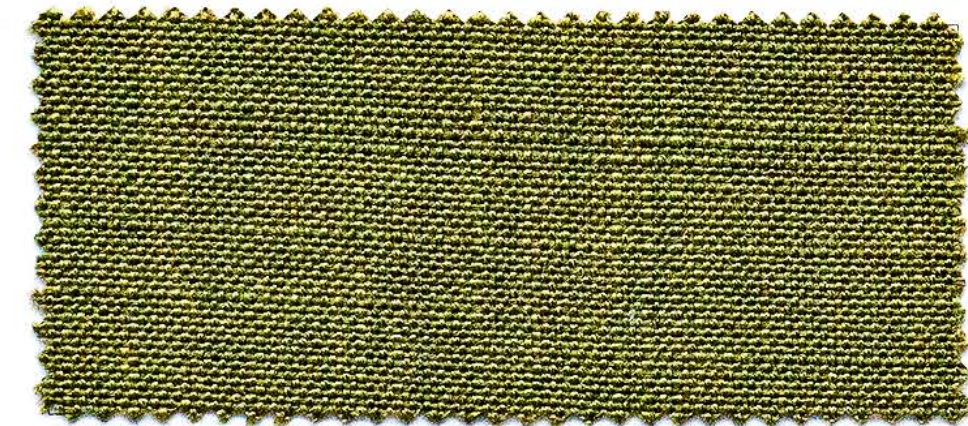
CAT. C **CC147** ZAGORA 181 



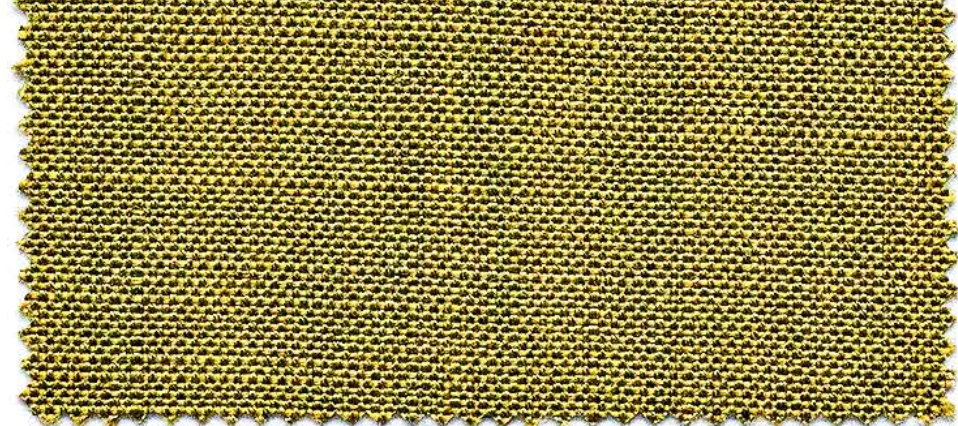
CAT. C **CC138** ZAGORA 74 



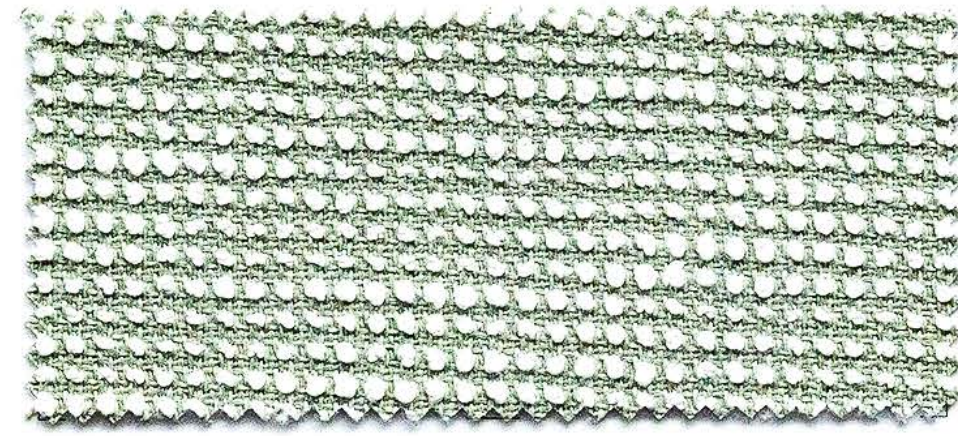
CAT. C **CC193** ERFOUD 18174 




CAT. C **CC192** ERFOUD 74 



CAT. C **CC193** ERFOUD 18174 



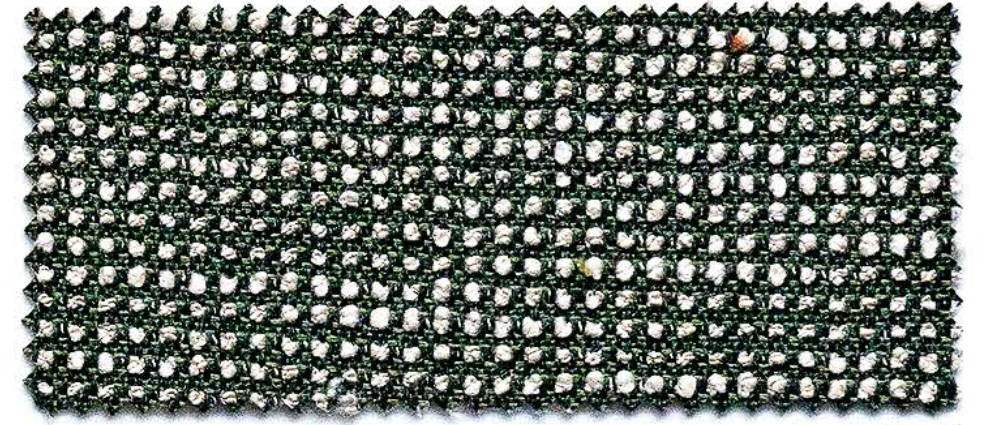
CAT. C **CC258** SLO 19107 SPIREA  



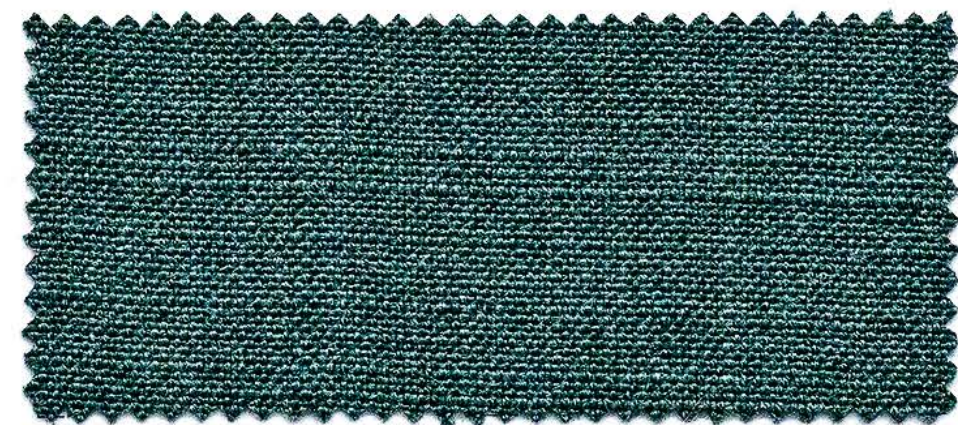
CAT. C **CC060** HER 18011 LEAF  



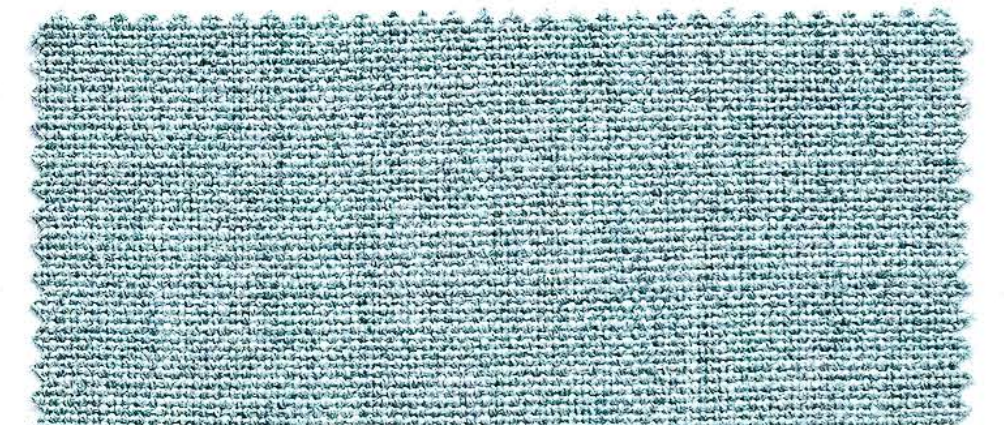
CAT. C **CC114** HER 18012 MOSS  



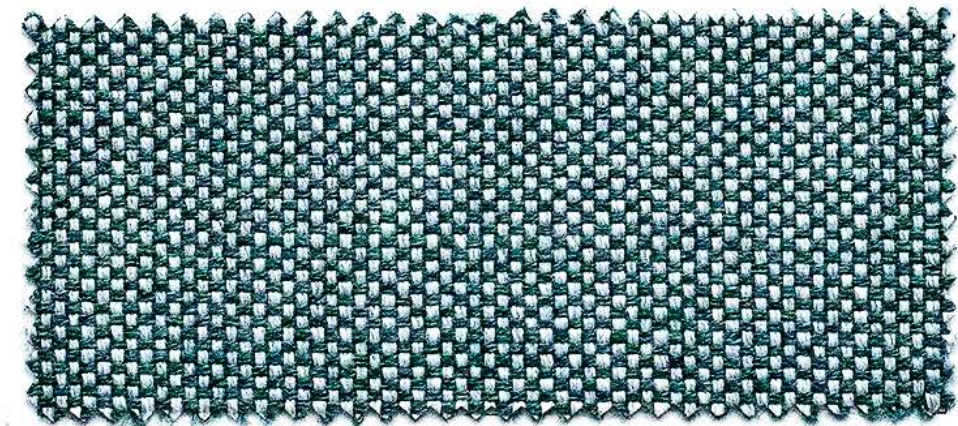
CAT. C **CC257** SLO 19106 FERN  



CAT. C **CC096** ERFOUD 71 



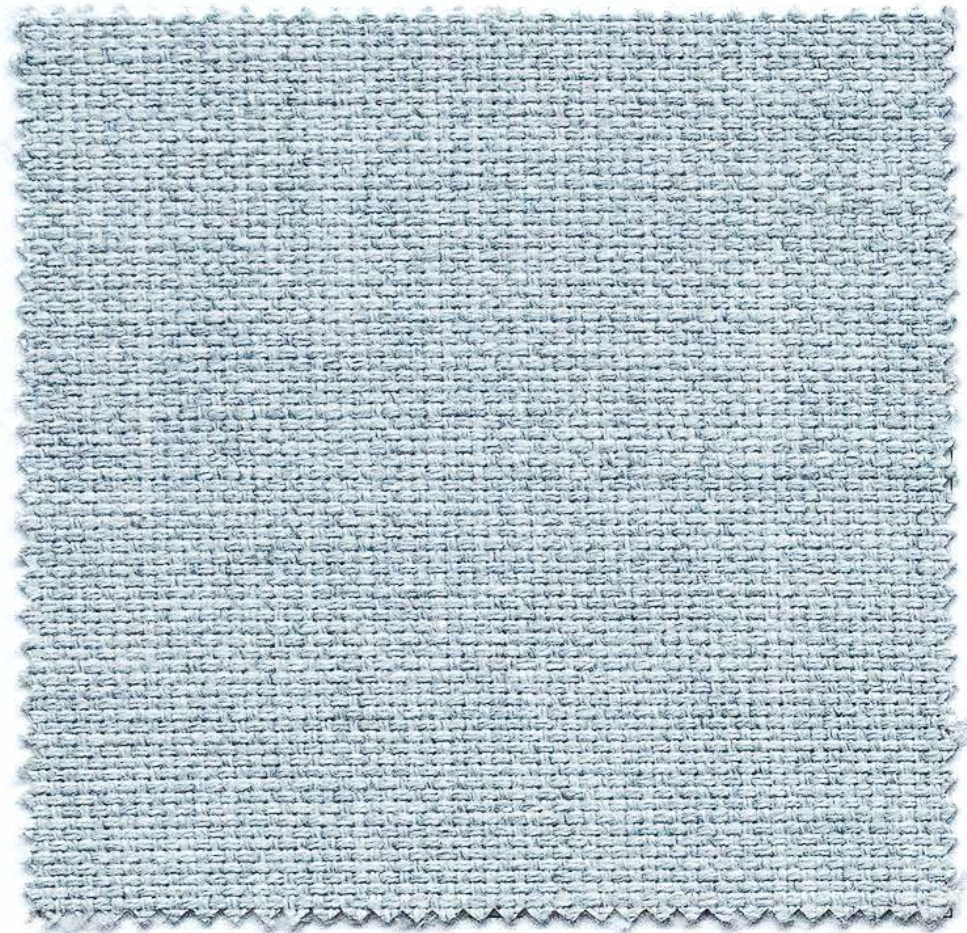
CAT. C **CC095** ERFOUD 80 



CAT. C **CC097** ZAGORA 8271 



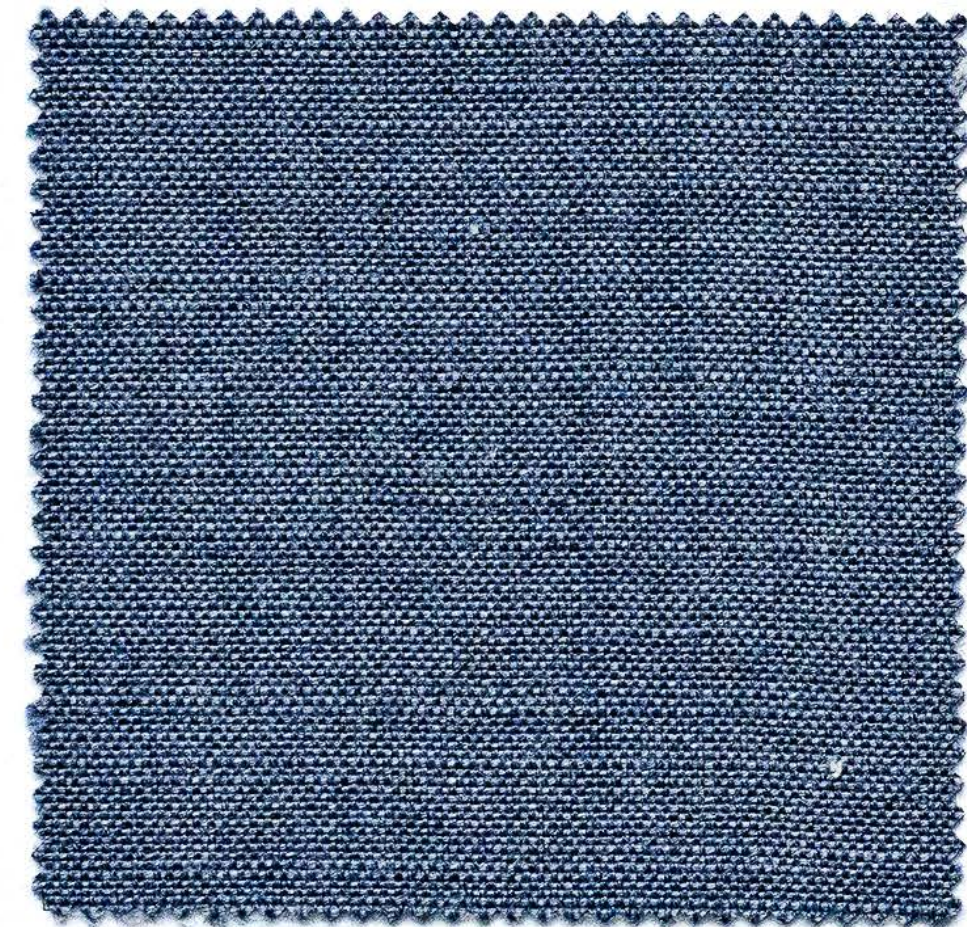
CAT. C **CC095** ERFOUD 80 



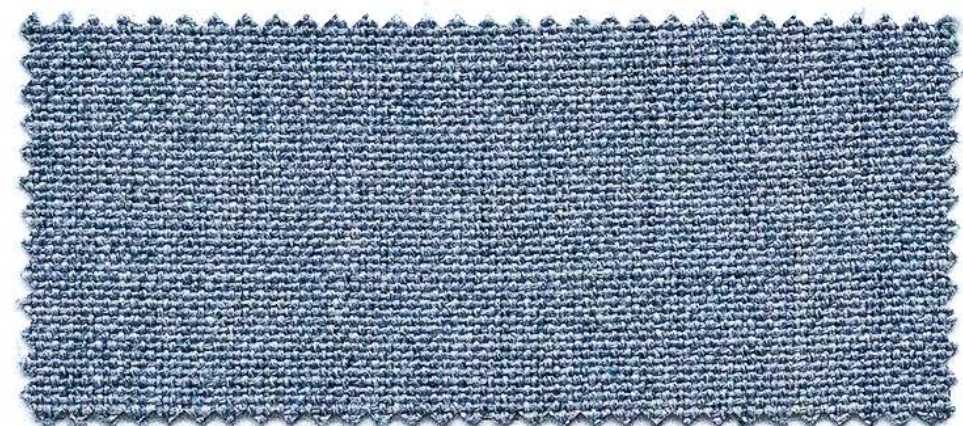
CAT. C **CC139** ZAGORA 82



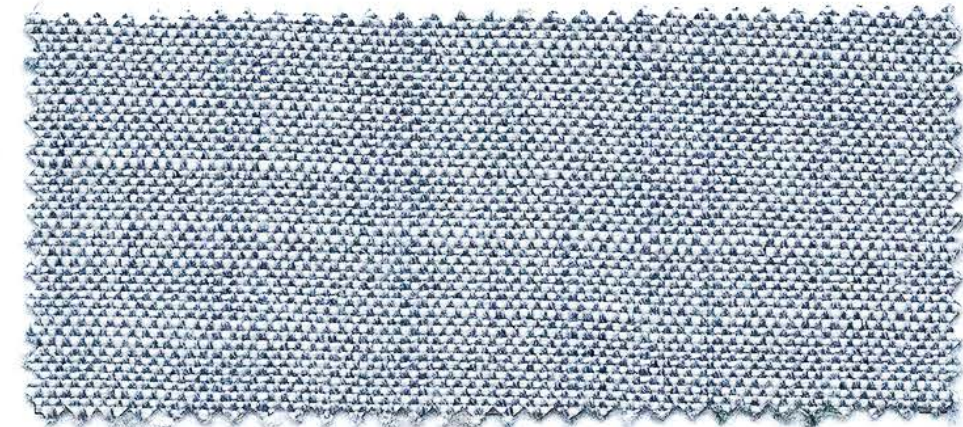
CAT. C **ON002** ONDA 80



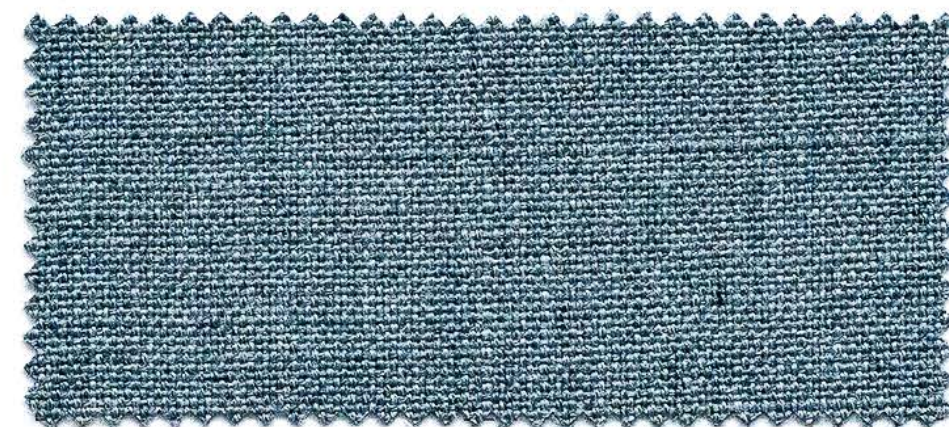
CAT. C **CC194** ERFOUD 7587



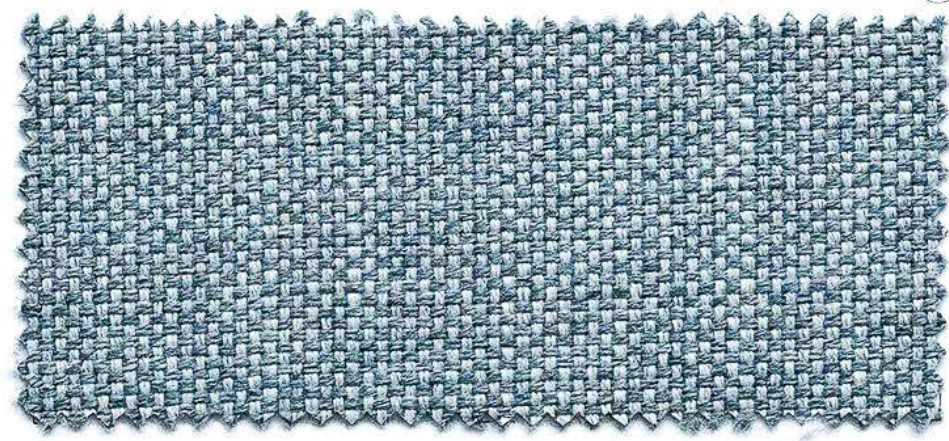
CAT. C **CC050** ERFOUD 87



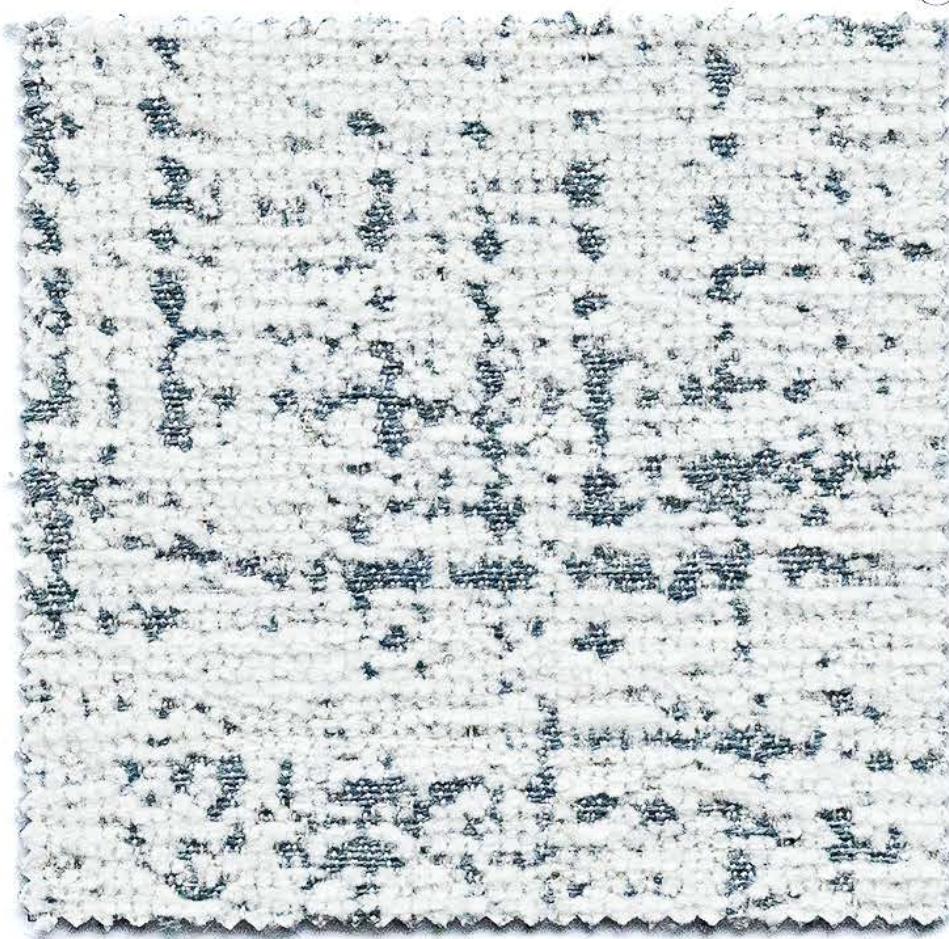
CAT. C **CC049** ERFOUD 8715



CAT. C **CC122** ERFOUD 81



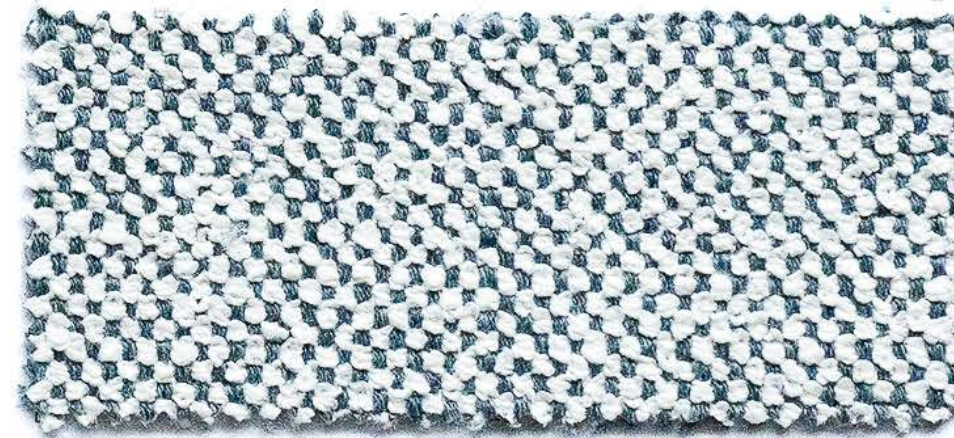
CAT. C **CC125** ZAGORA 8281



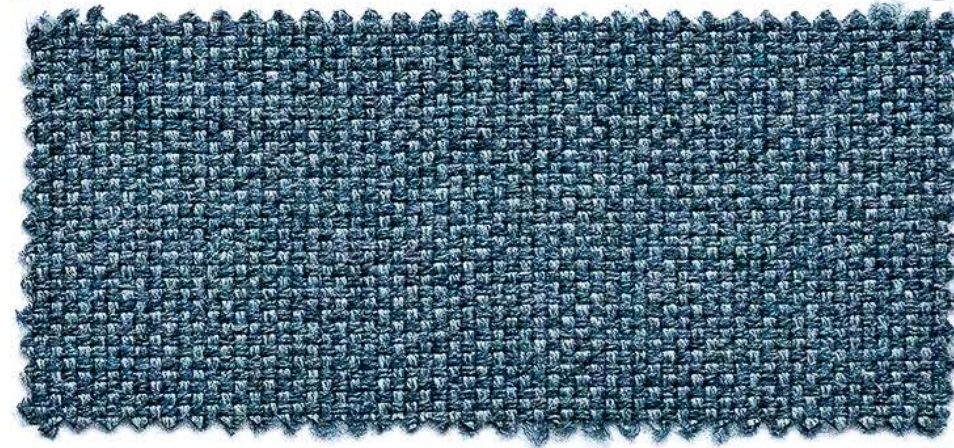
CAT. C **FA002** FALESIA 81



CAT. C **KO002** KOLYMBETRA 80

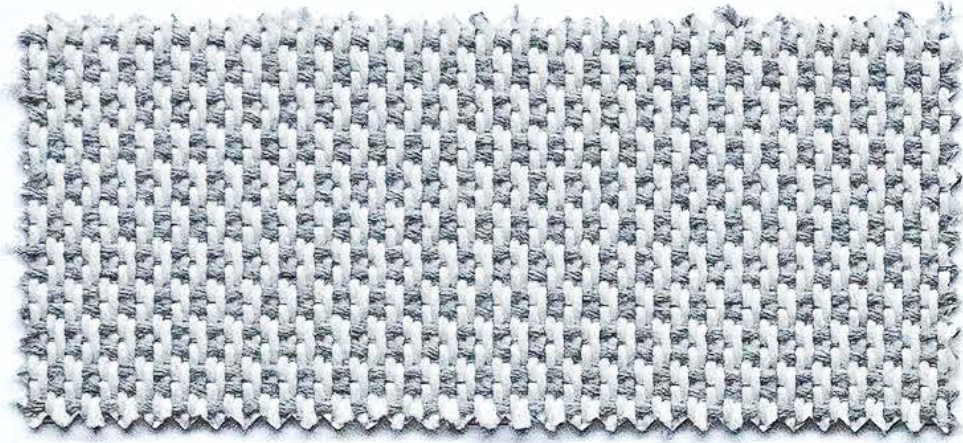


CAT. C **CC142** SPUGNA 81

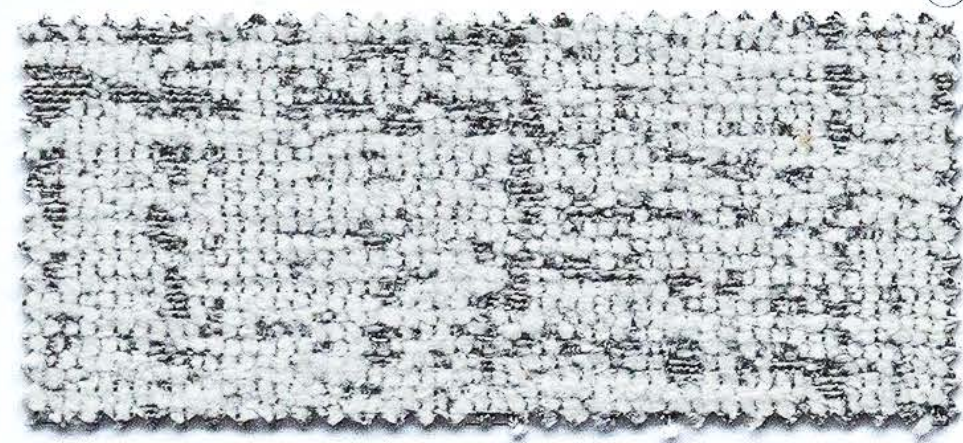


CAT. C **CC145** ZAGORA 8183

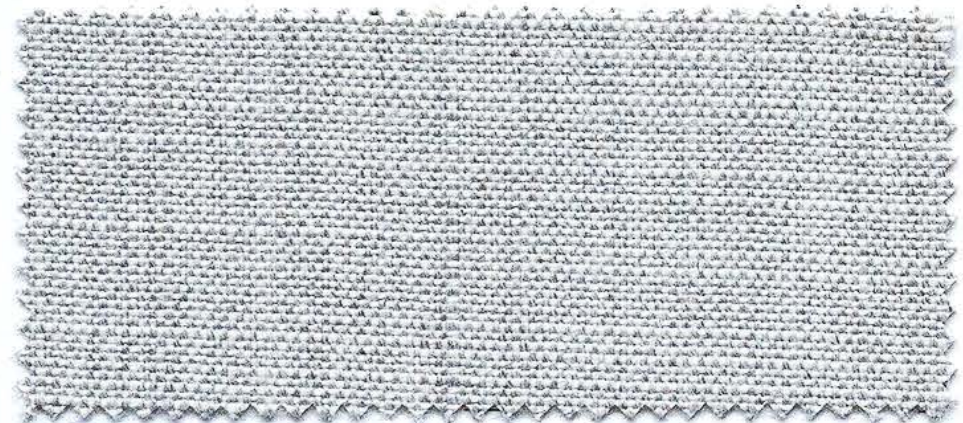




CAT. C **CC222** LOP R043 ASH



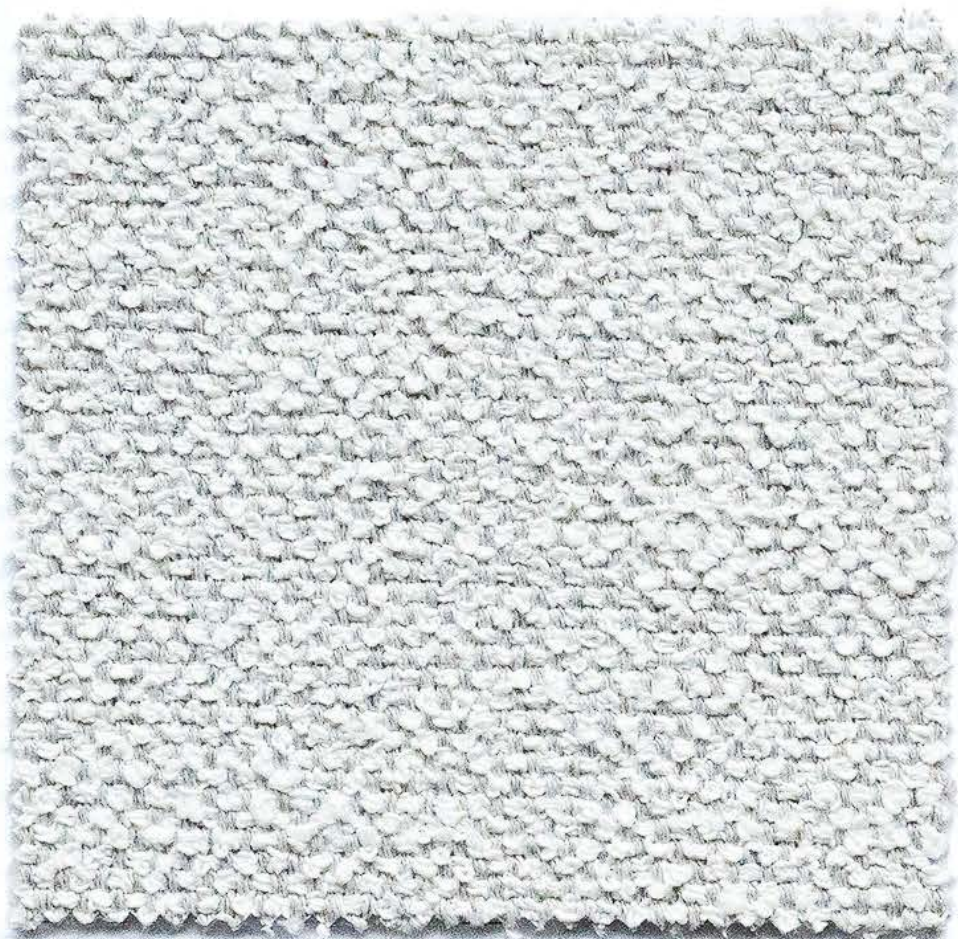
CAT. C **FA003** FALESIA 171



CAT. C **CC079** ERFOUD 7915



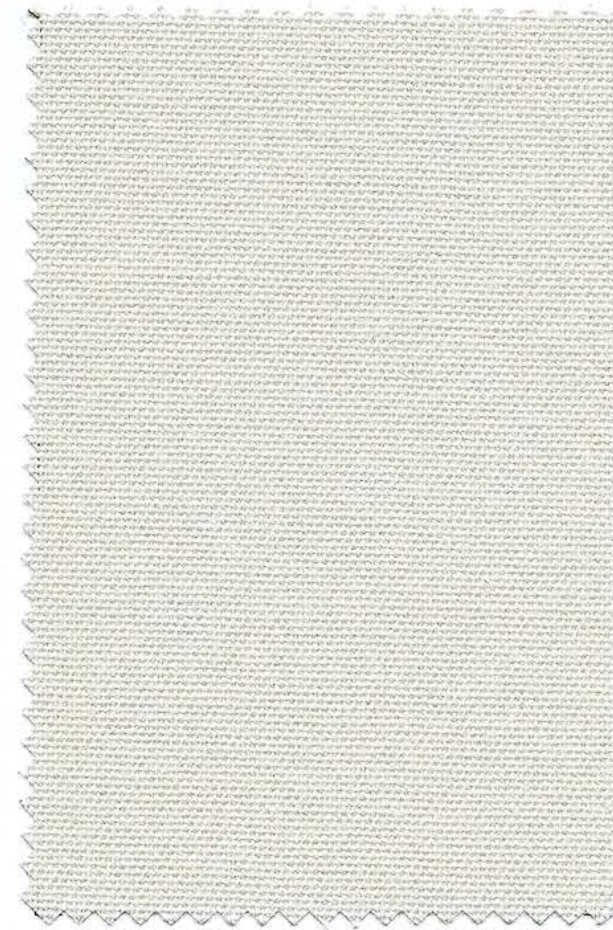
CAT. C **CC146** ZAGORA 2010



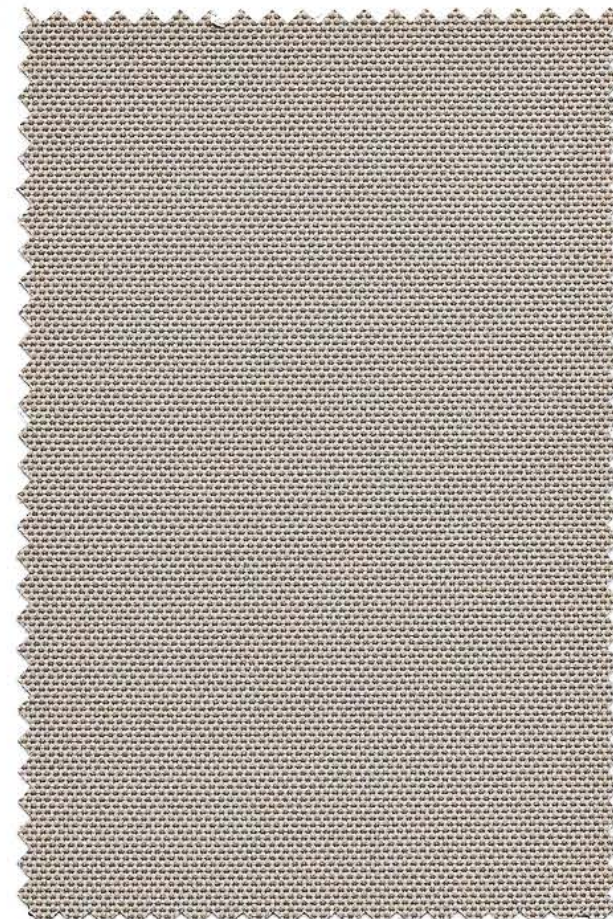
CAT. C **CC141** SPUGNA 170



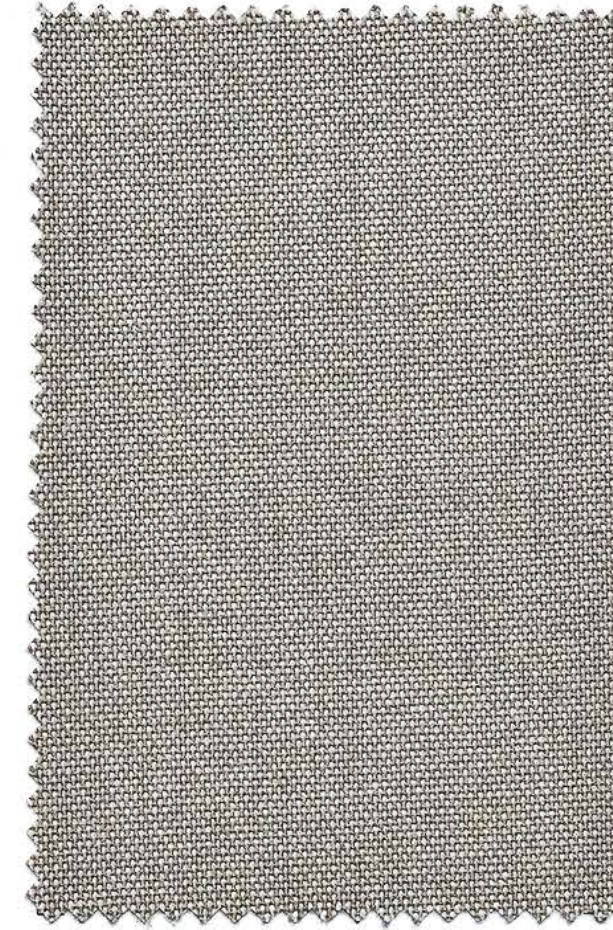
CAT. C **ON003** ONDA 170



CAT. A **CE005** 15/151



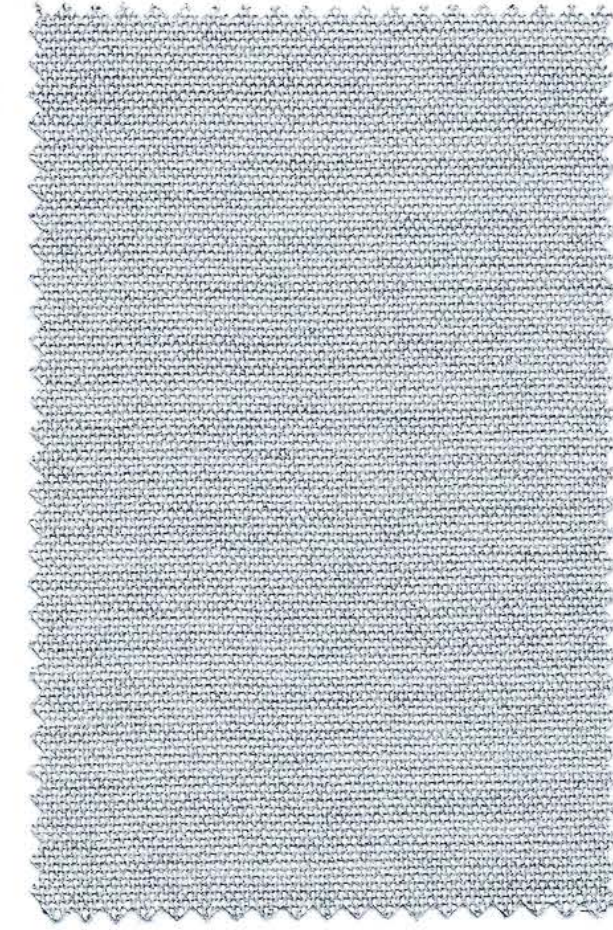
COVER **TDC 01**



CAT. A **CE003** 929/926



COVER **TDC 02**



CAT. A **CE001** 15/727

ETAMINE
Tenda *Curtain*
CAT. A **CE005** 15/151

Scheda Tecnica
Data Sheet

>>



ETAMINE
Tenda *Curtain*
CAT. A **CE003** 929/926

ETAMINE
Tenda *Curtain*
CAT. A **CE001** 15/727

Scheda Tecnica
Data Sheet

>>



Telo di copertura
Cover
COVER **TDC 01**

Telo di copertura
Cover
COVER **TDC 02**

