



DOLCEFARNIENTE
OUTDOOR

DEN
OUTDOOR

MIRABILE COLLECTION / SUBLIME COLLECTION

Materials and Finishes Maintenance



DOLCEFARNIENTE
OUTDOOR

Synthetic Resin

Materials and Finishes Maintenance

Synthetic Resin



SUBLIME COLLECTION



Pearl White



Pearl Ivory



Pearl Mouse Grey



Pearl Quartz Grey

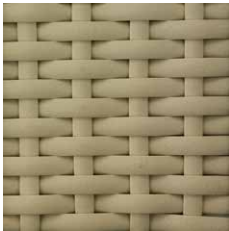
MIRABILE COLLECTION



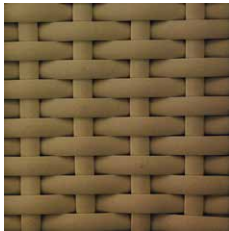
White



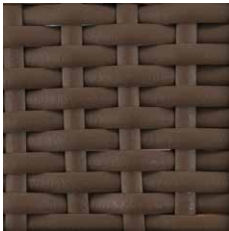
Ivory



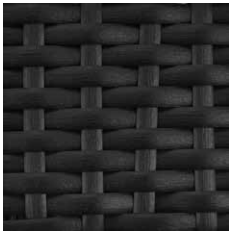
Beige



Teak



Brown



Black

The synthetic rattan that we use is a fiber made of HDPE High Density Polyethylene with the following features:

- UV and weather resistant
- Environmental friendly
- Washable and durable
- 100% recyclable
- Non-fading
- Easy maintenance
- High tensile strength
- Non-toxic

Standard maintenance:

To clean, use a soft cloth / brush with water and, if necessary, a neutral detergent.

Do not use solvents or alkaline detergents which could damage the strings. Avoid chemical detergents, aggressive solvents, rigid brushes and high pressure water, this in order not to deteriorate the surface of the rope itself.

Never scrape the surface.

Remove the dirt on the surface by washing with water, use non-aggressive detergent products with the help of sponges and / or soft rags.

Rinse thoroughly until all detergent or soap residues are completely eliminated. If the dirt persists, repeat the operation.

Cleaning tips:

- Spray Cleaner (Chanteclair or similar) on the surface and let cleaning solution sit 1 minute.
- Brush the surface repeatedly in a circular motion using a soft bristle brush.
- Flush with plenty of water, as it is very important to avoid residue drying on surface. Wipe with a dry cloth.

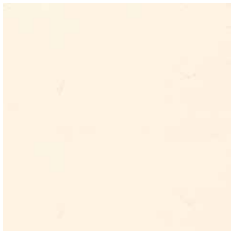


DOLCEFARNIENTE
OUTDOOR

Steel
Paints

Materials and Finishes Maintenance

Paints



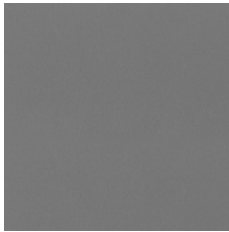
Beige Limestone
SD 031C 100 7020



Earth Clay
SD 031C 8005 020



Anodic Bronze
AE 2010 8000 320



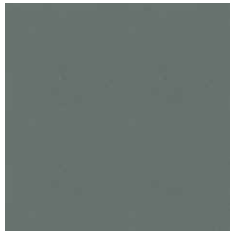
Grey Gold
SD 301C 7031 020



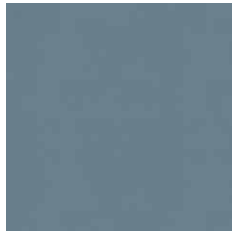
Brown Slate
SD 030C 8004 020



Anodic Champagne
AE 2010 1000 220



Anodic Malachite
AE 2010 6000 620



Anodic Sapphire
AE 2010 5000 520



Precious Sand
SD 031C 100 7020



Simply Copper
SD 301C 2040 020

Materials and Finishes Maintenance

Metal finishings



Steel
AM-0283-So6



Gold
AM-0284-So6



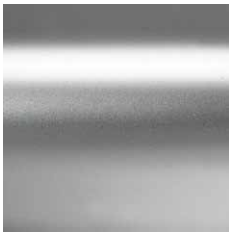
Warm Gold
AM-0282-So6



Copper
AM-0280-So6



Bronze
AM-0281-So6



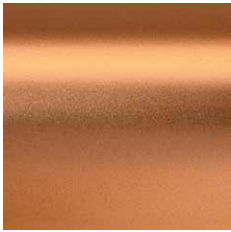
Steel
AM-0278-Go1



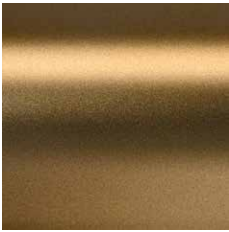
Gold
AM-0261-So1



Warm Gold
AM-0262-Go1



Copper
AM-0259-So1



Bronze
AM-0258-Ao1

Maintenance of painted iron furniture products

Our products made of iron undergo special processing and painting cycles to make them suitable for use in outdoor environments in order to counteract the natural process of corrosion.

The phenomenon of corrosion is the deterioration of a material caused by exposure to atmospheric agents, chemicals, etc.

The rate of corrosion depends, among other things:

- on the aggressiveness of the environment in which the product is placed
- on the maintenance of the product

Materials and Finishes Maintenance

Paints



Aggressiveness of the environment

The classification in Italy is regulated by the UNI EN ISO 12944-2 standard, which correlated the type of outdoor environment to a corrosion class:

Corrosion class	Typical outdoor environments
C2 - Low	Areas with low level of pollution, mainly rural areas.
C3 - Medium	Urban and industrial areas, modest pollution by sulphur dioxide. Coastal areas with low salinity.
C4 - High	Industrial and coastal areas with moderate salinity.
C5M - Very high (marine)	Coastal and offshore areas with high salinity.
C5I - Very high (industrial)	Industrial areas with high humidity and aggressive atmosphere.

Cleaning tips

Products

Before using a cleaning agent, make sure that it is suitable for cleaning painted surfaces (see technical data sheet).
If a strong cleaning agent is to be used to remove heavy soiling, it must always be diluted and tested on small areas that are not visible in order to check their suitability.
Under no circumstances may abrasive or polish cleaners or any detergents containing solvents or solutions containing chloride hydrocarbons, esters or ketones be used.

Frequency

The frequency of cleaning depends on:

- The environment in which the surface is located, that is, rural, marine, industrial or a combination of these environments, etc.;
- The levels of air pollution;
- Whether placed indoors or outdoors;
- If the surface is subject to an erosive action of the coating, due to sand, dust, etc.;

Corrosion class	Typical outdoor environments	Checking and cleaning frequency
C2 - Low	Areas with low level of pollution, mainly rural areas.	12 months
C3 - Medium	Urban and industrial areas, modest pollution by sulphur dioxide. Coastal areas with low salinity.	6 months
C4 - High	Industrial and coastal areas with moderate salinity.	3 months
C5M - Very high (marine)	Coastal and offshore areas with high salinity.	2 months
C5I - Very high (industrial)	Industrial areas with high humidity and aggressive atmosphere.	2 months

Maintenance / Restoration

In case of need for a restoration of the painted surface due to:

- Heavy soiling due to incorrect cleaning;
- Normal degradation over time;
- Accidentally damaged coating (the damaged area should be repaired as soon as possible to avoid oxidation/rusting triggers);

It is recommended to use companies/operators with appropriate skills.



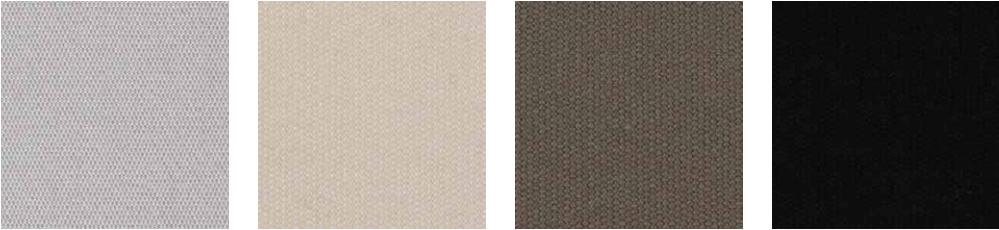
DOLCEFARNIENTE
OUTDOOR

Fabrics for Gazebo Cover

Materials and Finishes Maintenance

Fabrics for Gazebo Cover

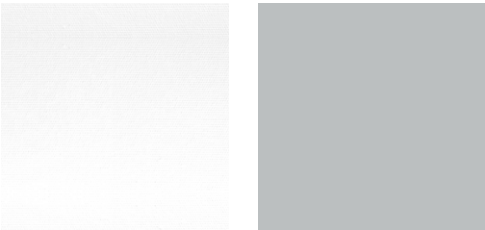
DICKSON ORCHESTRA - Cat.C



6196120 Pierre 7133120 Naturel 7559120 Taupe 6028120 Noir



DICKSON TEXTURA - Cat.C



7311 Natural 654 Gris



The fabrics used for gazebo covers are treated with a special finish which delays the forming and accumulation of dirt.
In order not to spoil this treatment, cleaning of the fabric must be done regulary respecting the following recommendations:

Standard maintenace:

- Dust and dry awning as thoroughly as possible to remove all surface particles by vacuuming, air blasting, beating or brushing.
- Stain removal:
- For fingerprints or grease stains, use soapy water.
- For watermarks, sponge out as much as you can and rub gently with a moist cloth. Never use detergents or other chemical products.
- Do not machine wash.
- Do not use pressure washer machine.



Fade Resistant



Water & Stain Resistant



Protects from the UV and Heat



Tear Resistant



Mold Resistant

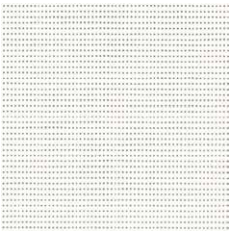


Easy Care

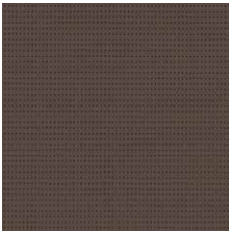
Materials and Finishes Maintenance

Fabrics for Gazebo Cover

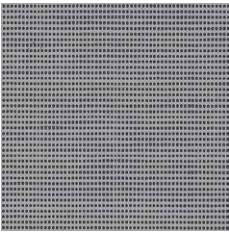
SOLTIS 86



2044 White



2043 Bronze



2045 Beaten metal



2047 Anthracite



REGULAR CLEANING

SOLTIS textiles has a surface treatment that contains an anti-grip to withstand the pollution.

To avoid sedimentation of polluting agents however, cleaning must be carried out regularly.

Regular cleaning

- Ensure the SOLTIS textile is rolled out.
- Spray a detergent like chanteclair
- According to the severity of the dirt or stain, leave for 2 to 3 minutes.
- Rub with a soft brush or a white cloth.
- Rinse with clean water or wipe with a wet sponge.
- In case of deep staining, repeat the above procedure.

Chemical products are forbidden

- Leave the SOLTIS textile to dry, spread out in the open air if weather conditions allow.



Fade Resistant



Water & Stain Resistant



Protects from the UV and Heat



Tear Resistant



Mold Resistant



Easy Care



DOLCEFARNIENTE
OUTDOOR

Curtains Fabrics

All our fabric does not promote mildew growth, however, mildew may grow on dirt and other foreign substances that are not removed from the fabric.

Regular cleaning is therefore recommended to keep fabrics in good condition.

For tough stain please refer to DFN customer care.

Materials and Finishes Maintenance

Curtains Fabric

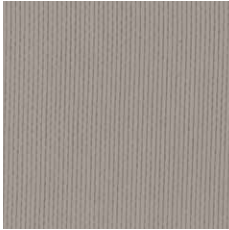
TULLE - Cat.C



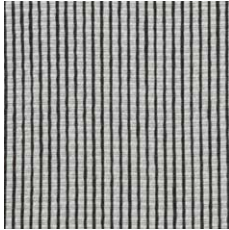
EL01 White



AF11 Titanium



EL10 Brown

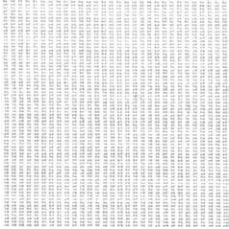


AC11 Black

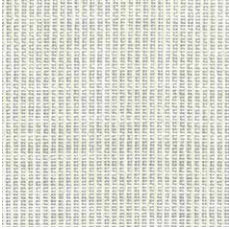


REGULAR CLEANING

COLORVIRA 1 - Cat.C



110 White



111 Off White

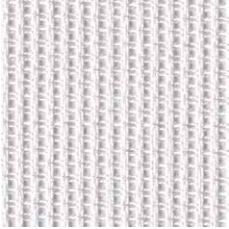


118 Sand



REGULAR CLEANING

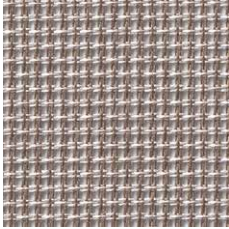
ALBIS - Cat.C



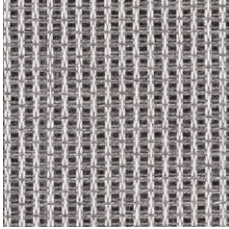
00784 Snow



00786 Linen



00788 Stone

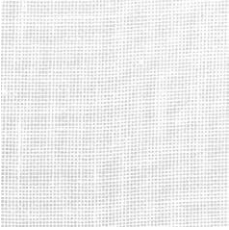


00783 Smoke



REGULAR CLEANING

LINEN STYLE 1- Cat.C



110 White



111 Off White



112 Ivory



REGULAR CLEANING



DOLCEFARNIENTE
OUTDOOR

Fabrics

All our fabric does not promote mildew growth, however, mildew may grow on dirt and other foreign substances that are not removed from the fabric.

Regular cleaning is therefore recommended to keep fabrics in good condition.

For tough stain please refer to DFN customer care.

Materials and Finishes Maintenance

Fabrics

TWILLTWEENTY - Cat.E



30318-002 Beige 30318-003 Corda 30318-004 Cipria 30318-006 Grigio 30318-009 Pesco 30318-013 Acqua





REGULAR CLEANING

CROCHET - Cat.E

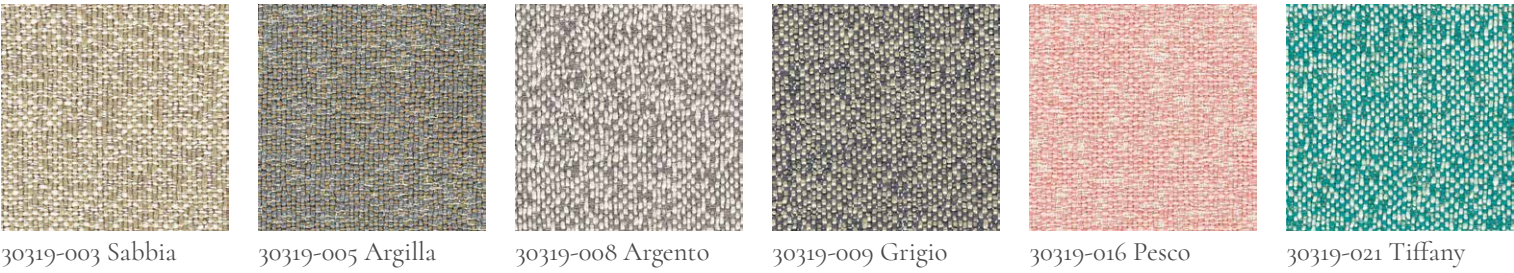


30365-002 Sabbia 30365-003 Nude 30365-004 Madreperla 30365-006 Cachi 30365-012 Corallo 30365-015 Indaco



REGULAR CLEANING

FABTHIRTY - Cat.E

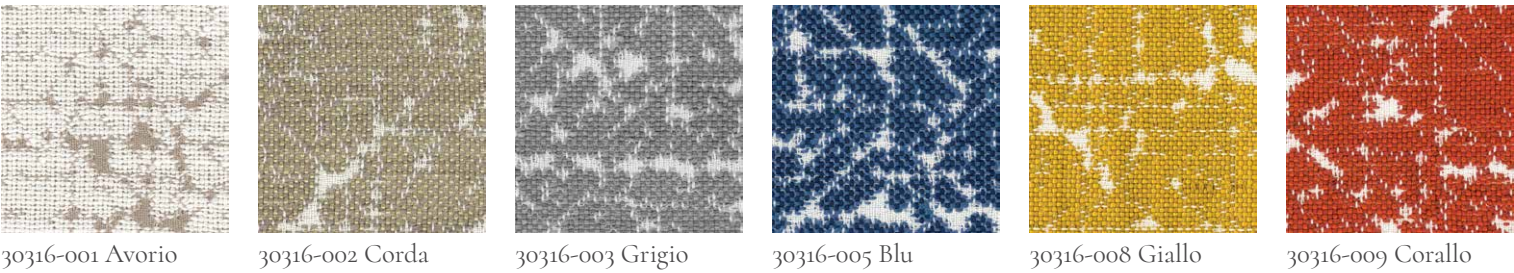


30319-003 Sabbia 30319-005 Argilla 30319-008 Argento 30319-009 Grigio 30319-016 Pesco 30319-021 Tiffany

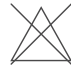




REGULAR CLEANING

DIECIELODE - Cat.E



30316-001 Avorio 30316-002 Corda 30316-003 Grigio 30316-005 Blu 30316-008 Giallo 30316-009 Corallo



REGULAR CLEANING

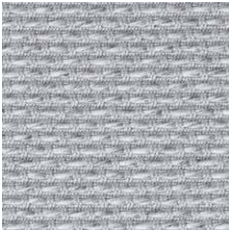
Materials and Finishes Maintenance

Fabrics

RABAT - Cat.E



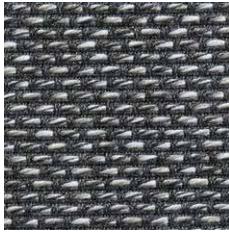
92915 Sand



79 Light Grey



92694 Taupe



97 Dark Grey



7921 Light Blue



92925 Peach



REGULAR CLEANING

VELVETY - Cat.F



30362-001 Madreperla



30362-002 Avorio



30362-006 Grigio



30362-007 Argilla



30362-012 Rosa



30362-009 Acqua



REGULAR CLEANING

VELOUR HYERES - Cat.F



F3411001 Blanc



F3411004 Chamois



F3411011 Flamingo



F3411014 Moutarde



F3411020 Fidji



F3411021 Delphinium



F3411023 Nuit



F3411022 Canard



F3411017 Saugé



F3411012 Pêche



F3411006 Tapir



F3411007 Orpailleur



IRON ON REVERSE

REGULAR CLEANING

Materials and Finishes Maintenance

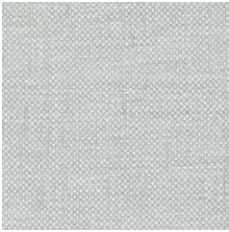
Fabrics



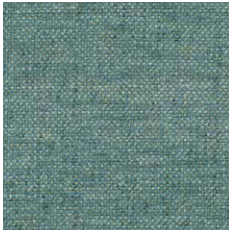
COMPORTA - Cat.G



F3869001 - Ivoire



F3869022 Celeste



F3869025 Neptune



F3869022 Atlantique



F3869020 Amande



F3869015 Verveine



F3869005 Sable



REGULAR CLEANING

CORAIL - Cat.G



F3483001 Gris
Front



F3483001 Gris
Reverse



F3483002 Naturel
Front



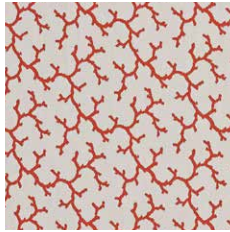
F3483002 Naturel
Reverse



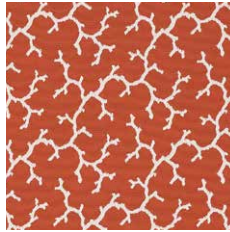
F3483004 Turquoise
Front



F3483004 Turquoise
Reverse



F3483005 Corail
Front



F3483005 Corail
Reverse



REGULAR CLEANING

RAMIER - Cat.G



F3405001 Blanc



F3405001 Beige



REGULAR CLEANING

MALBAN - Cat.G



F3410001 Blanc



F3410002 Mastic



REGULAR CLEANING

Materials and Finishes Maintenance

Fabrics

BARI - Cat.G



Beige



Celadon

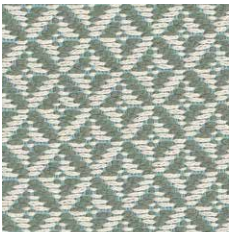


REGULAR CLEANING

ERCOLE- Cat.S



Sable



Sauge



REGULAR CLEANING

ECUME - Cat.S



F3478001 Naturel



F3478002 Jaune



F3478003 Bleu



F3478004 Tourquoise



F3478005 Peach



F3478006 Noir



REGULAR CLEANING

GOLFE - Cat.S



F3442025 Camomille



F3442021 Menthe



REGULAR CLEANING

Materials and Finishes Maintenance

Fabrics

TREILLAGE - Cat.S



F3546001 Jaune



F3546004 Bleu

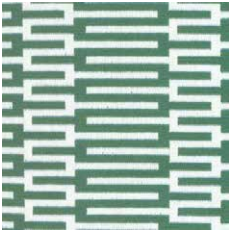


REGULAR CLEANING

ZIPPER- Cat.S



F3480002 Jaune



F3480004 Turquoise



REGULAR CLEANING

Materials and Finishes Maintenance

Key to Symbols



do not wash



wash at or below 30°



wash at or below 40°



do not dry clean



do not iron



iron low temperature



no steam



dry clean - any solvent except trichloroethylene



dry clean - any solvent except trichloroethylene - DELICATE



do not bleach



clorine bleach



do not wring



do not tumble dry



tumble dry low temperature



drip dry



DOLCEFARNIENTE
OUTDOOR

Protective covers

Materials and Finishes Maintenance

Protective Covers

DICKSON SURLAST



Blue



Light grey



Stain Resistant



Easy Maintenance



For a correct use, it is recommended to cover the furniture only if perfectly clean and dry and to insert the cover in the correct position on the article. If the cover is placed on damp or wet furniture, take care to remove it within a few hours and allow both the furniture and the cover to dry well. Never store or fold wet or damp covers, but allow them to dry in a well-ventilated area.

One of the best ways to keep your protective cover made on Surlast looking good is to hose fabrics off on a monthly basis with clear water.

When it's time for a thorough cleaning, Surlast can be cleaned while still on site or, size permitting, they can be removed for cleaning in a washing machine.

General cleaning

- Brush the fabric to remove surface dirt.
- Spray the fabric with cold water.
- Prepare a mixture of soap and water. 1/4 cup mild soap, such as Woolite or Dawn dishwashing liquid, per gallon of lukewarm water.
- Rub the mixture onto the fabric with a soft brush.
- Allow the mixture to act on the fabric.
- Rinse thoroughly with clean water until the cleaning solution is completely removed.
- Allow the fabric to dry in the open air.

Spot stains cleaning

- Prepare a mixture of soap and water. 1/4 cup mild soap, such as Woolite or Dawn dishwashing liquid, per gallon of lukewarm water.
- Apply the mixture using a spray bottle.
- Work the solution into the stain by lightly scrubbing the area with a sponge or very soft bristle brush.
- Rinse thoroughly to remove all soap residue.
- Blot excess moisture with a clean, soft towel or sponge.
- Wet-vacuum or blot excess water.
- Air dry. Repeat steps 3 and 4 until all soap residue is removed.

To get rid of mould, use a solution of 1/10 bleach, 2/10 soap and 7/10 water instead of the mixture of soap and water.

For removable Surlast covers

Hand washing

- Soak fabric in a solution of 1/4 cup mild soap per gallon of lukewarm water.
- Use a sponge or a soft bristle brush as necessary.
- Rinse thoroughly to remove all soap residue.
- Air dry.

Machine washing

Machine wash in cold water. Depending on wash load size, use normal amounts of mild laundry detergent and add 1 cup of bleach. Allow fabric to air dry.

Tips

DO NOT dry clean. Surlast air-dries very quickly. Machine drying is not necessary. If fabric has some wrinkling, use an iron, if necessary, but only on the synthetic setting. As some irons exceed the recommended temperature on the synthetic setting, test a small inconspicuous area before ironing entire piece.

DO NOT use a steamer or iron set to steam setting.



DOLCEFARNIENTE
OUTDOOR

Eco-leather

All our fabric does not promote mildew growth, however, mildew may grow on dirt and other foreign substances that are not removed from the fabric.

Regular cleaning is therefore recommended to keep fabrics in good condition.

For tough stain please refer to DFN customer care.

Materials and Finishes Maintenance

Eco-leather



YACHT REGATTA - Cat.C



111 Off white 101 Canvas 402 Brown 701 Blue 200 Black

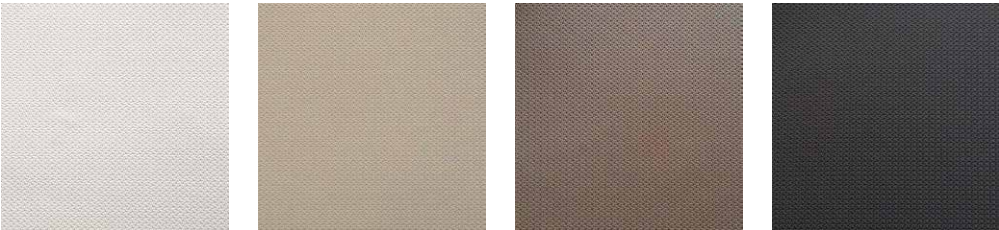


REGULAR CLEANING

FOR ALL TYPES OF STAIN

Remove stain by dabbing spot with a white cotton cloth soaked in a mild liquid detergent or a white cotton cloth soaked in a neutral soap solution (5 g/l).
Rinse with water and dry the surface well using a dry white cloth.

TEXTURE - Cat.D



42161 White 42163 Canvas 42166 Bronze 42171 Black



REGULAR CLEANING

FOR ALL TYPES OF STAIN

Remove stain by dabbing spot with a white cotton cloth soaked in a mild liquid detergent or a white cotton cloth soaked in a neutral soap solution (5 g/l).
Rinse with water and dry the surface well using a dry white cloth.

TERASKIN NAPPA - Cat.F



111 White 103 Oyster 408 Chocolate 700 Navy 200 Black



REGULAR CLEANING

FOR ALL TYPES OF STAIN

Remove stain by dabbing spot with a white cotton cloth soaked in pure Ethyl Alcohol (colourless liquid used in alcoholic beverages)

IMPORTANT SUGGESTIONS FOR COMBINATION STAINS es. jeans, ballpoint pen, permanent marker, lipstick, paints ecc.
Wait for the colour on the eco-leather surface to harden, then use an eraser to remove the stain.



DOLCEFARNIENTE
OUTDOOR

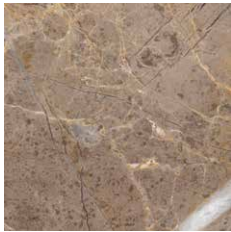
Marble and Ceramic

Materials and Finishes Maintenance

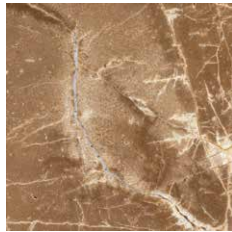
Natural Marble / Travertino



White Santa Caterina
Matt



Gemma Grey
Glossy



Grigio Imperiale
Glossy



Travertino
Travertino filled with epoxy resin

Our marbles are of natural stone and therefore have tones and veins that can vary, which make each piece unique and unimitable.

Each top is treated with silicon wax which is water repellent, that with time loses its effectiveness, for this reason we advise to repeat the process with wax for marble that you can easily find in a hardware store.

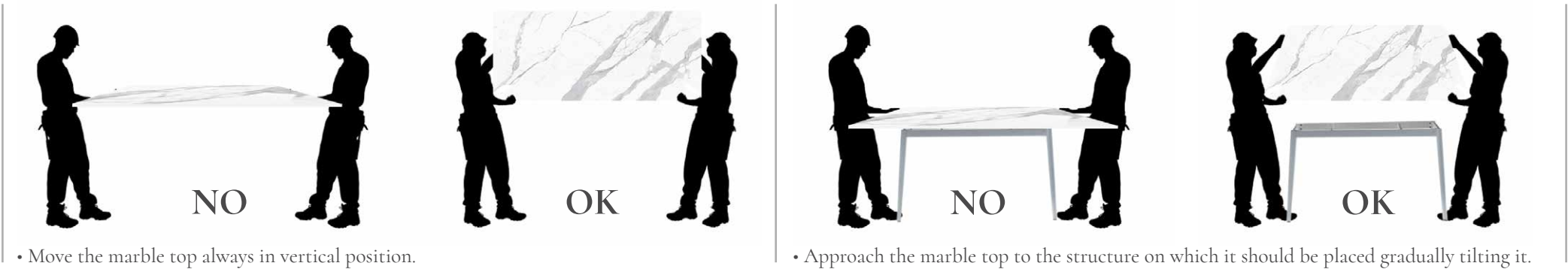
Regular maintenance

For normal cleaning it will be sufficient to pass the surface with water and a neutral detergent or alcohol, ensure not to use detergents that are too aggressive (very high or very low Ph), and in particular to remember to dry immediately the top with a clean cotton cloth.

Precautions

Avoid exposing the surface to chemical substances or solvents, in particular those for paints that contain trichloroethylene or Methylene chloride, solvents for nails, ammonia or detergents that contain ammonia, brighteners, indelible pens or ink, oily soap, coffee, wine, oil or residues of food like lemon or tomatoes.

If the tops were to come into contact with any of these substances wash immediatly with plenty of water. Active and quick maintenance is fundamental for maintaining the integrity of the marble which is a live and natural product that has the tendency to absorb all substances with which it comes into contact with.



Materials and Finishes Maintenance

Ceramic Marble



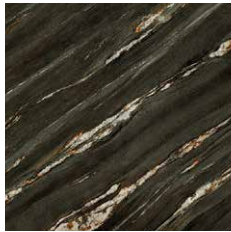
Arabescato 4D



Calacatta Macchia Vecchia 4D



Calacatta Aureo 4D



Kuroka 4D



Onice Giada



Onice Ghiaccio



Onice Alabastrino



Onice Reale



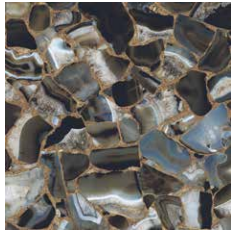
Onice Malaga



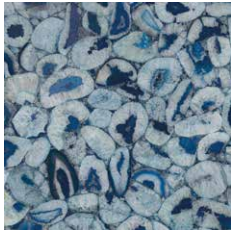
Onice Perla



Onice Oro



Agata Black



Agata Blu

Ceramic tops do not require any particular maintenance, thanks to the high resistance and stability of the material.

Regular maintenance

Cleaning can be carried out very simply using soft and clean cloths soaked in water, possibly adding neutral liquid detergent.

Dry the surface after cleaning is complete.

Do not use metal or abrasive brushes.

Precautions

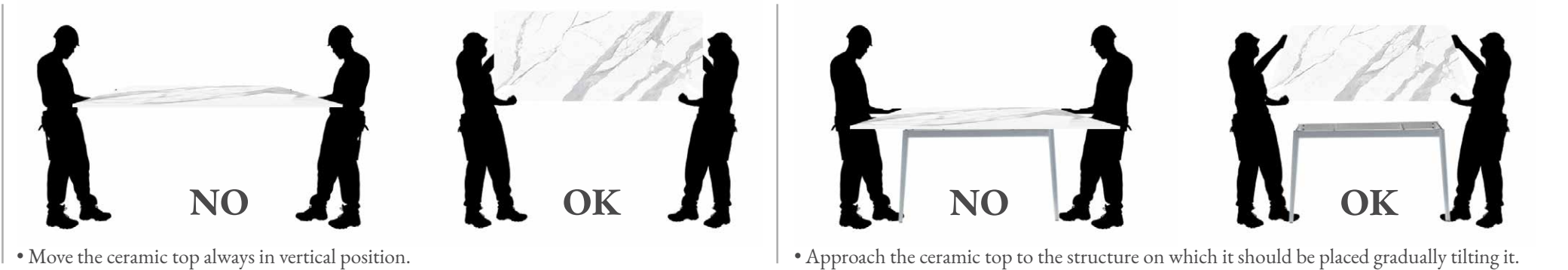
The use of products containing waxes, brighteners, strong acids (eg hydrofluoric, sulfuric, etc.) is not recommended because they could permanently damage the surface.

Remove any spills of staining liquids (like coffee, tea, red wine), caustic substances (such as oven cleaner), acids and colorants as soon as possible and rinse with water.

Ceramic tops are particularly resistant to thermal shocks, however we recommend the use of trivets to protect the surface over time.

Ceramic knives can damage the surface; therefore, we recommend to use cutting boards.

Avoid hitting the surface.





DOLCEFARNIENTE
OUTDOOR

Accessories

Materials and Finishes Maintenance

Accessories



DECORATIVE ACCESSORIES - SUNRISE



Gold

Chrome

Stainless steel AISI 316 plus galvanized finishing chrome or gold with protective treatment

DECORATIVE ACCESSORIES - AURORA



Gold

Chrome

Stainless steel AISI 316 plus galvanized finishing chrome or gold with protective treatment

PLATES



Gold

Chrome

Gold

Chrome

Brass plus galvanized chrome or gold finishing with protective treatment

Regular cleaning:

- Use warm soapy water, rubbing vigorously with non-abrasive cloths and sponges.
- Rinse thoroughly with cold water and rub again with clean cloths until completely dry, to avoid streaks.
- Do not use bleach and all related products. Under no circumstances should bleach come into contact with stainless steel.
- Avoid all cleaning products that contain chlorine, nitric acid, sulfuric acid, products with abrasive particles.

More stubborn stains:

- Mix a glass of boiling water with white wine vinegar and 2 tablespoons of baking soda. Dip the sponge in this solution and wipe it over the steel surface.
- Rub vigorously.
- Rinse and dry immediately with a clean cloth.

To keep the steel parts clean and shiny, regular cleaning on a monthly basis is required.

WARNING: accidental impacts can damage the surface finish and favor the appearance of oxidation



DOLCEFARNIENTE
OUTDOOR

Is part of

DFN
OUTDOOR

DFN srl - Italy
via Luigi Einaudi 114 G - 61032 - Fano (PU)
T. 00 39 0721 1835821

e-mail: info@dfnsrl.com

www.dfnsrl.com