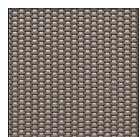
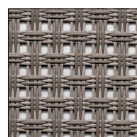


OUTDOOR FURNITURE

campioni di tessuti
samples of fabrics
Muster von Bespannungen



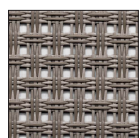
thick
fabric



open-work
fabric



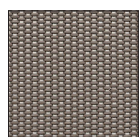
ULISSE



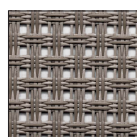
open-work
fabric



ULISSE DESIGN - ULISSE VIP



thick
fabric



open-work
fabric



ATENA



CALIPSO - FEDRA

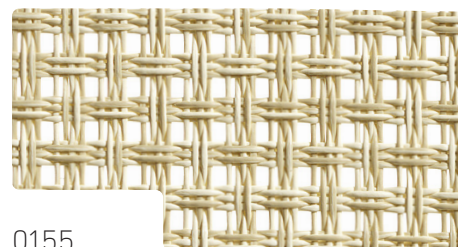
tessuti traforati | open-work PVC fabrics | weitmaschige Bespannungen



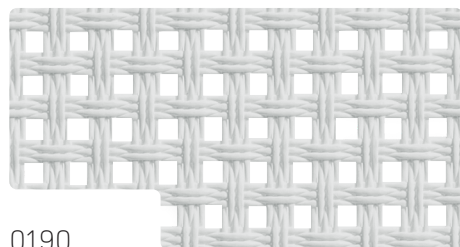
0108



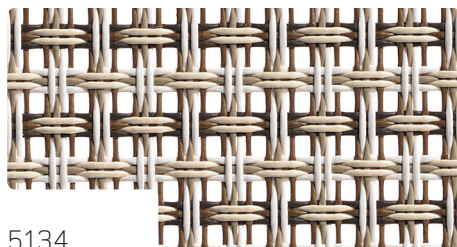
0149



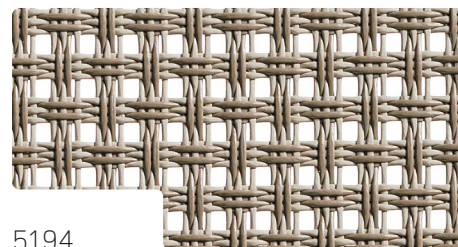
0155



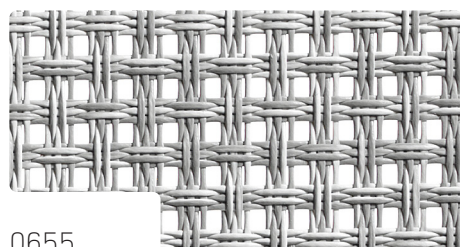
0190



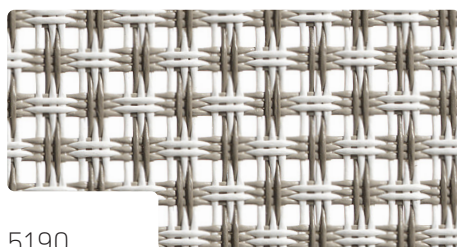
5134



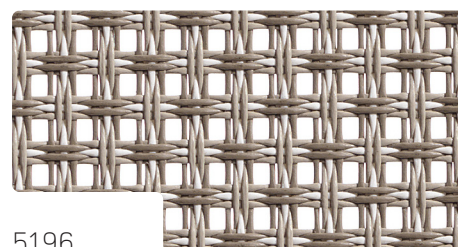
5194



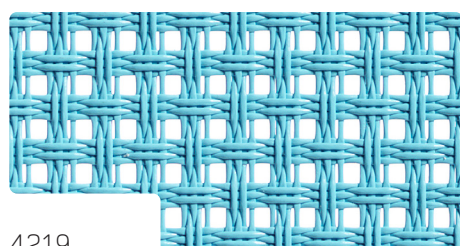
0655



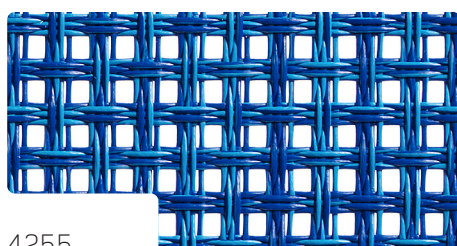
5190



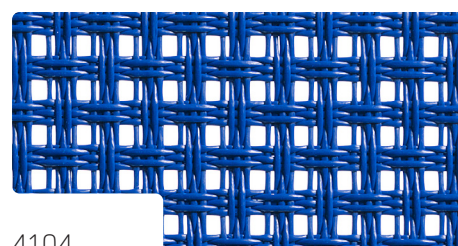
5196



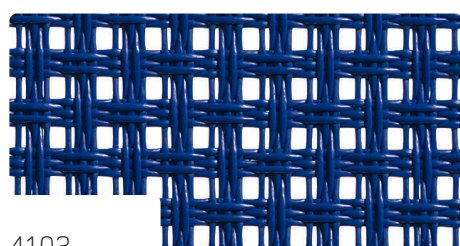
4219



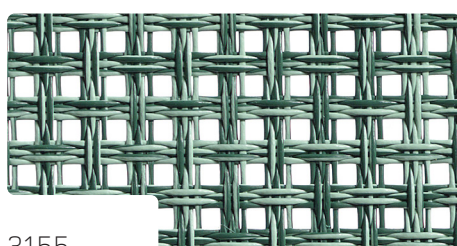
4255



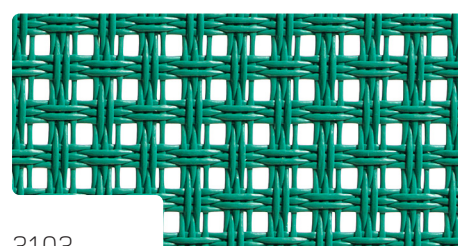
4104



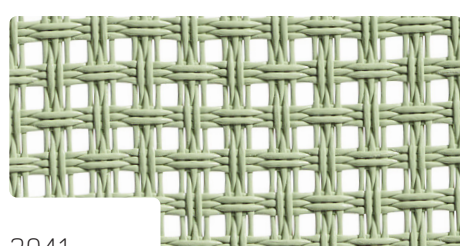
4103



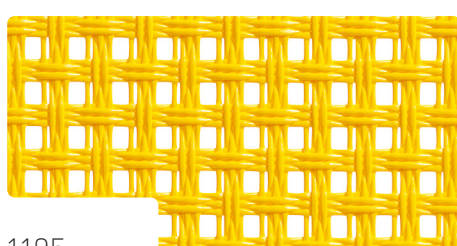
3155



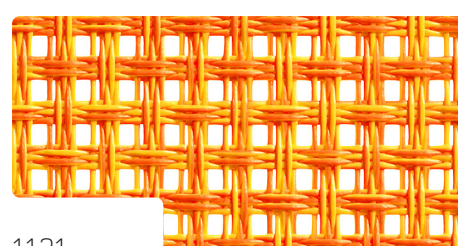
3103



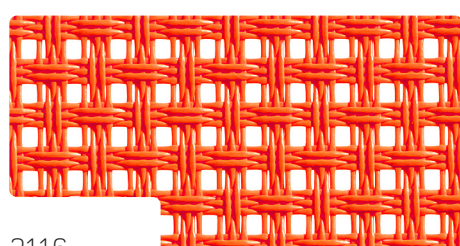
3041



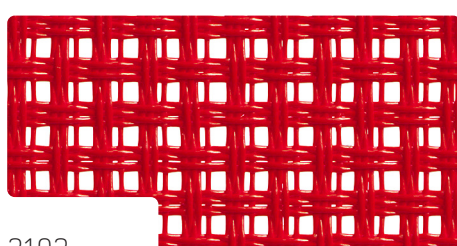
1195



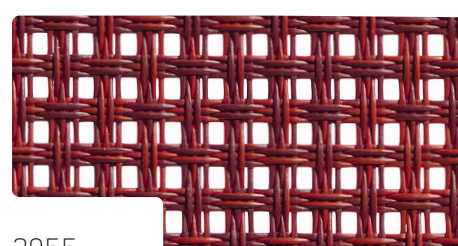
1121



2116

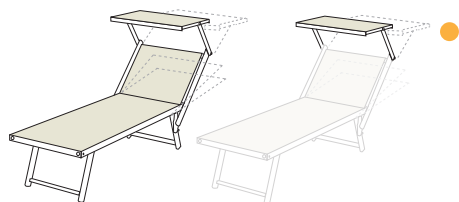


2102



2955

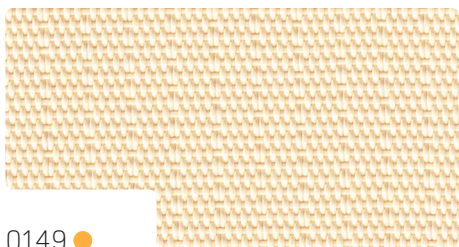
tessuti pesanti | thick PVC fabrics | wetterfeste Bespannungen



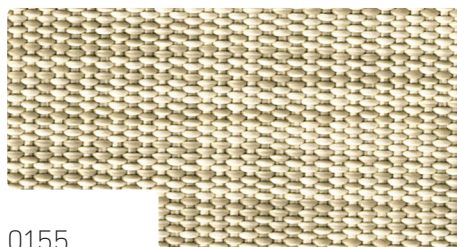
0108



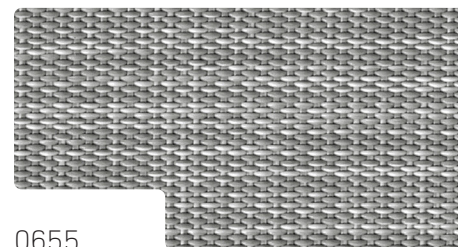
0190 ●



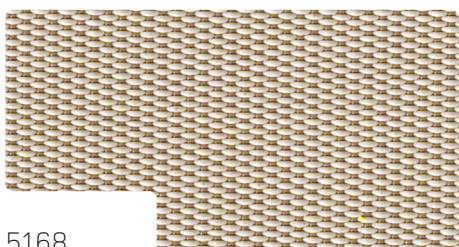
0149 ●



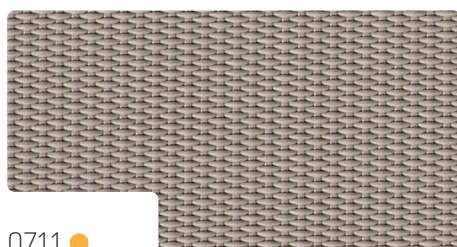
0155



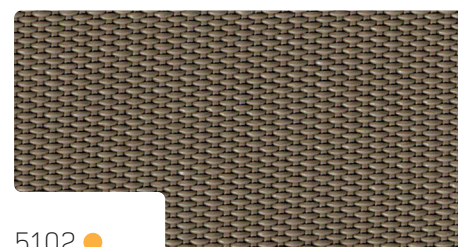
0655



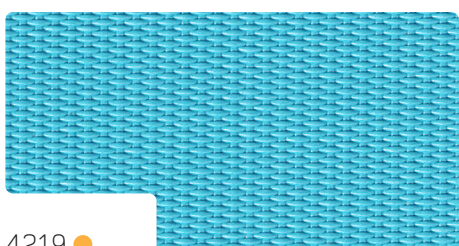
5168



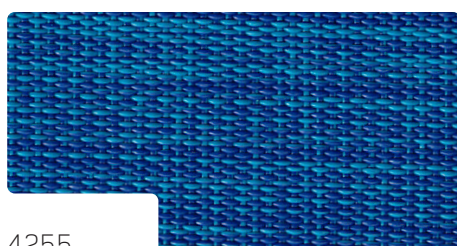
0711 ●



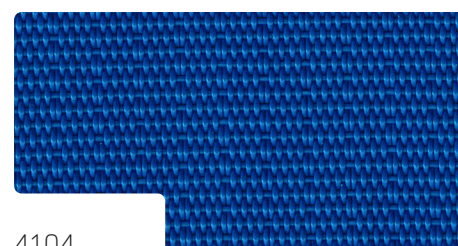
5102 ●



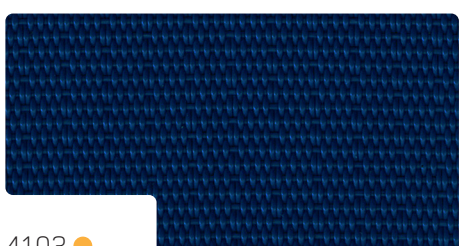
4219 ●



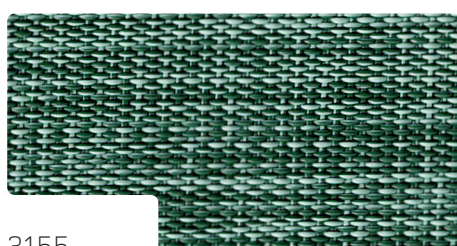
4255



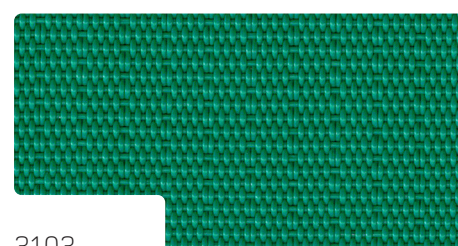
4104



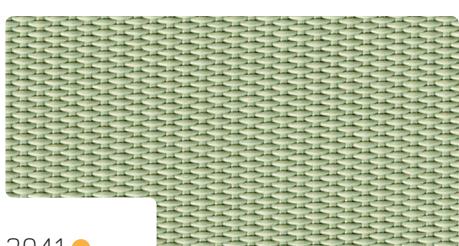
4103 ●



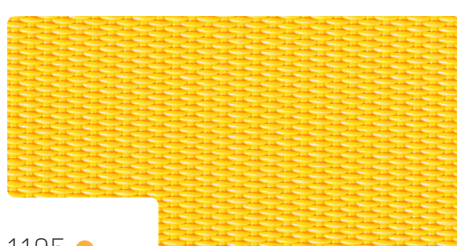
3155



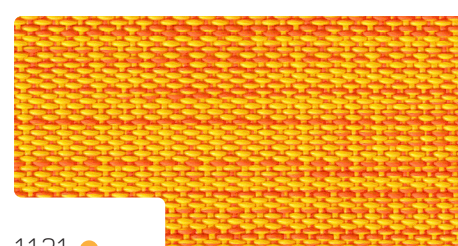
3103



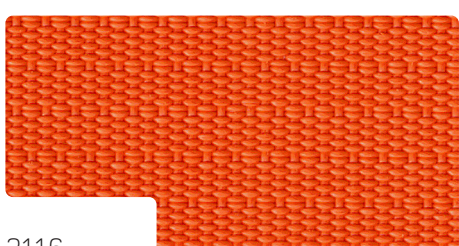
3041 ●



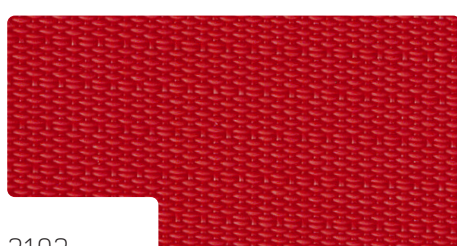
1195 ●



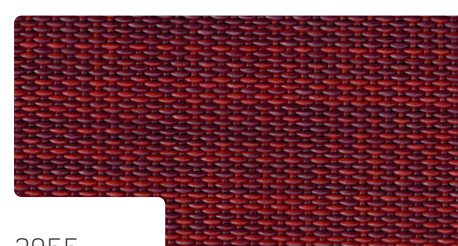
1121 ●



2116



2102

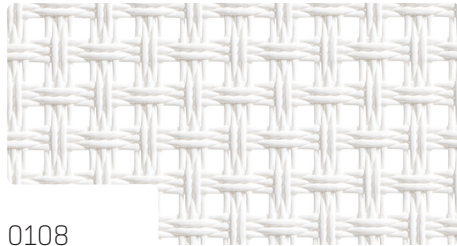


2955

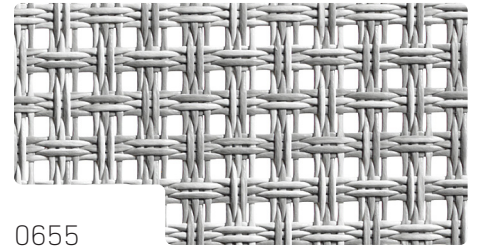
tessuti traforati
open-work PVC fabrics
weitmaschige Bespannungen



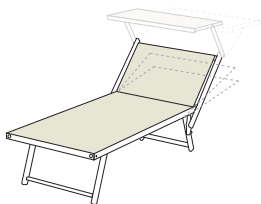
ULISSE DESIGN



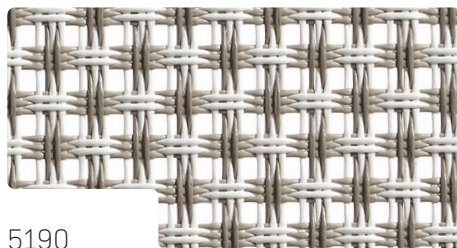
0108



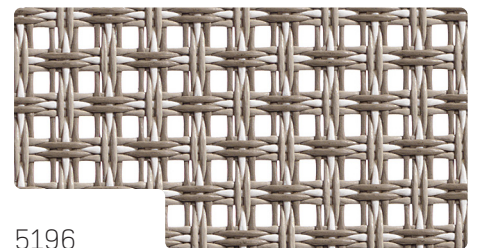
0655



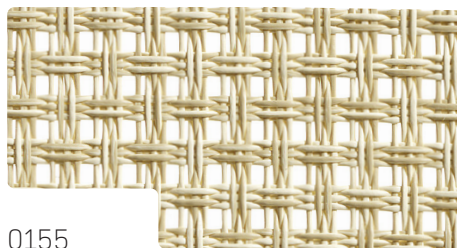
ULISSE VIP



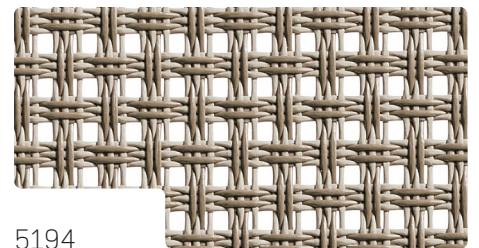
5190



5196

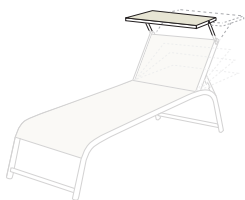


0155



5194

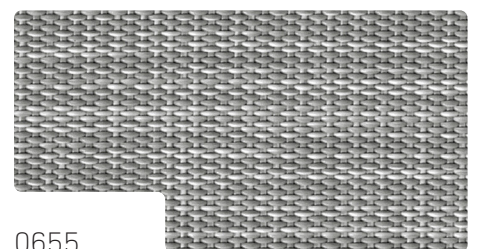
tessuti pesanti
thick PVC fabrics
wetterfeste Bespannungen



ULISSE DESIGN



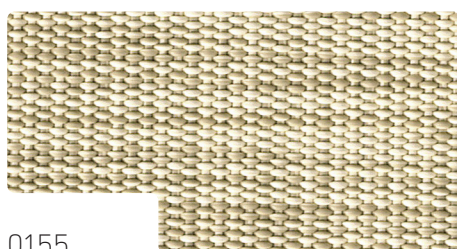
0108



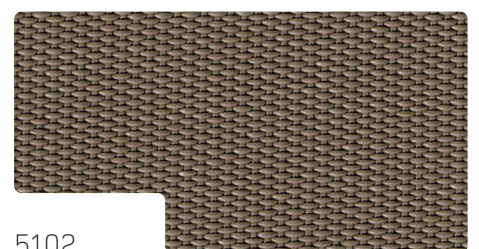
0655



ULISSE VIP

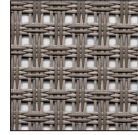


0155

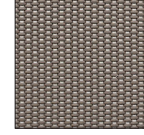


5102

TECHNICAL DATA – OUTDOOR FURNITURE



open-work fabric



thick fabric

Composizione Fibre analysis	70% polivinile - 30% poliestere 70% polyvinyl - 30% polyester	70% polivinile - 30% poliestere 70% polyvinyl - 30% polyester
Costruzione Construction	ordito 7,5 fili/cm - trama 7,5 fili/cm warp 7,5 threads/cm - weft 7,5 threads/cm	ordito 13,2 fili/cm - trama 5 fili/cm warp 13,2 threads/cm - weft 5 threads/cm
Altezza Width	70 cm 70 cm	70 cm 70 cm
Peso Weight	740 g/m ² 740 g/m ²	960 g/m ² 960 g/m ²
Spessore Thickness	1,7 mm 1,7 mm	1,7 mm 1,7 mm
Carico di rottura Breaking load	ordito 340 kg/5 cm - trama 340 kg/5 cm warp 340 kg/5 cm - weft 340 kg/5 cm	ordito 370 kg/5 cm - trama 220 kg/5 cm warp 370 kg/5 cm - weft 220 kg/5 cm



don't bleach



only cold washing is permitted



cold hand washing is permitted



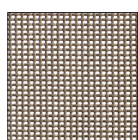
don't use pressure-washer



CATAS®

OUTDOOR FURNITURE

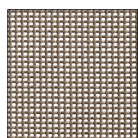
campioni di tessuti
samples of fabrics
Muster von Bespannungen



TRO
fabric



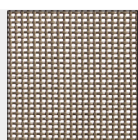
AFRODITE



TRO
fabric



GIANO - POLLUCE - CASTORE



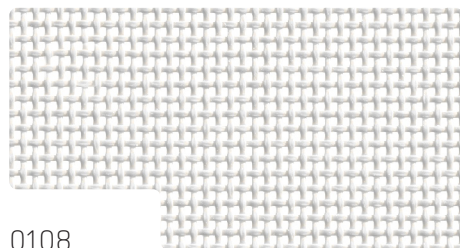
TRO
fabric



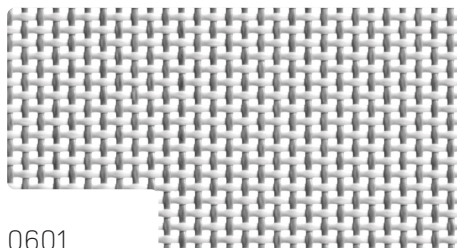
ATENA



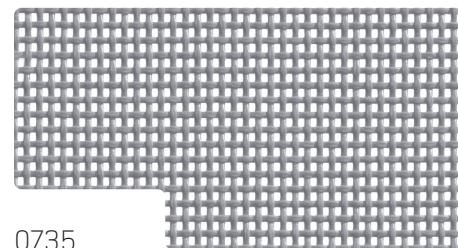
CALIPSO - FEDRA



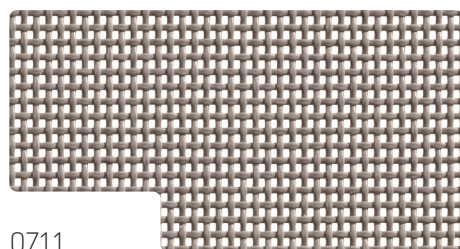
0108



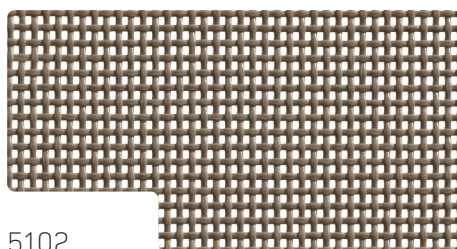
0601



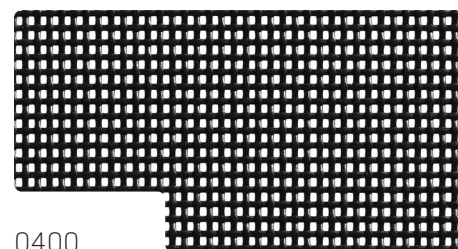
0735



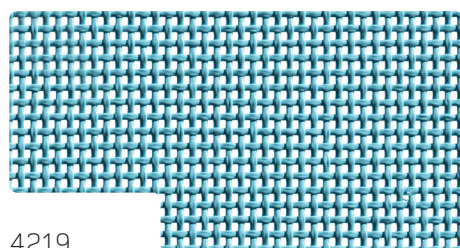
0711



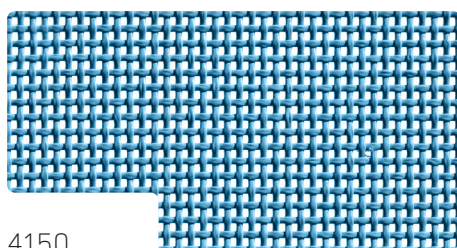
5102



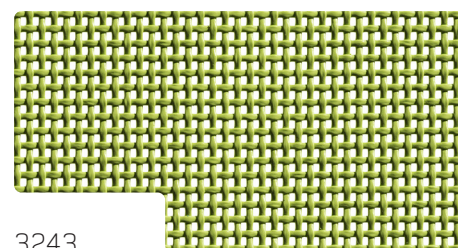
0400



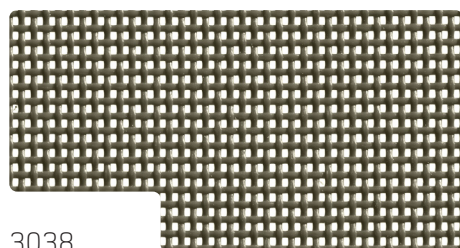
4219



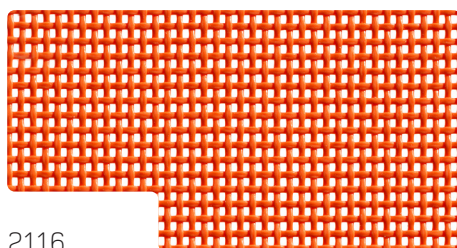
4150



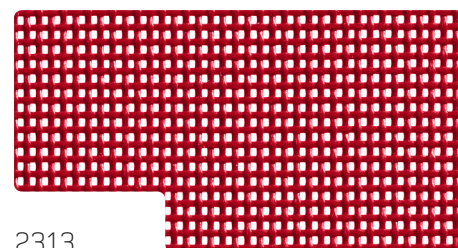
3243



3038



2116



2313

Composizione Fibre analysis	70% polivinile - 30% poliestere 70% polyvinyl - 30% polyester
Costruzione Construction	ordito 6,1 fili/cm - trama 5,3 fili/cm warp 6,1 threads/cm - weft 5,3 threads/cm
Peso Weight	560 g/m ² 560 g/m ²
Spessore Thickness	1,15 mm 1,15 mm
Carico di rottura Breaking load	ordito 310 kg/5 cm - trama 270 kg/5 cm warp 310 kg/5 cm - weft 270 kg/5 cm



Tested for harmful substances
according to Oeko-Tex Standard 100

Test-No. D05-0212

FI Hohenstein



don't bleach



cold hand washing is permitted



only cold washing is permitted



don't use pressure-washer

