

# BREEZER

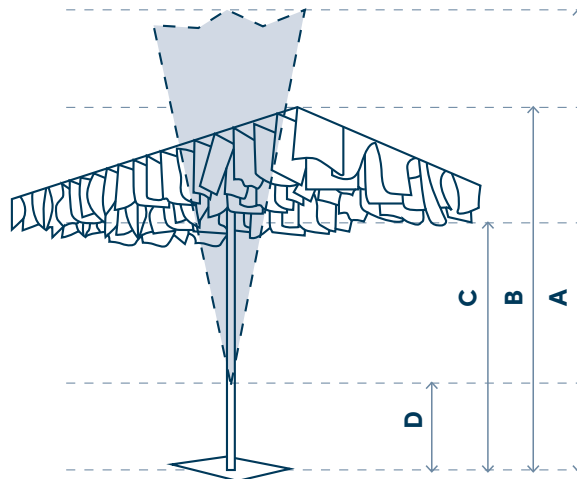
Design by Davy Grosemans



# BREEZER

## Technical details

Design by Davy Grosemans



|                         |                              |   |
|-------------------------|------------------------------|---|
| <b>PARASOL</b>          | 350 cm x 250 cm              |   |
| <b>Shape</b>            |                              |   |
| <b>Dimensions</b>       | A - Height closed            | 320 cm  |
|                         | B - Height open              | 245 cm  |
|                         | C - Free height open         | 205 cm  |
|                         | D - Free height closed       | 72 cm   |
|                         | Weight                       | 22 kg   |
|                         | Packaging size               | 380 x 36 x 30 cm  |
|                         | Shade area (m <sup>2</sup> ) | ± 8,75 m <sup>2</sup>   |
| <b>Fabric</b>           | Top fabric                   | Sunvision (see page 3)  |
|                         | Top fabric colours           |   |
|                         | Flags                        | Polyester (see page 3)  |
|                         | Flags colours                |   |
|                         | Option fire Retardant        |   |
| <b>Frame</b>            | Pole                         | Ø 40 mm   |
|                         | Material                     | Stainless steel 316 – brushed, natural colour<br>Option: Marine grade treatment for installation on or near the beach |
|                         | Ribs                         | 12 x Ø 18 mm – Aluminium  |
| <b>Protective cover</b> | Polyester Ripstop® – grey    |   |
| <b>Wind Resistance</b>  | 5 Bft (38 km/h – 24 mph)     |   |

## BASES

**BASE PLATE BREEZER** 54 kg  
10 mm – Steel QSTE 325 – Sandblasted, metallized and powder coated

**Colours**  
white RAL 9010 – black RAL 9005

**Wind resistance**  
4 Bft (28 km/h – 17 mph)

Base options 1



**TILE BASE LUXURY** 140 kg  
– 89 x 89 x 12,5 cm  
– 8 tiles 40 x 40 cm  
– 3 separate anti rust treatments

Base options 2-3-4-5-6



**TILE BASE LUXURY** 200 kg  
– 89 x 89 x 17,5 cm  
– 12 tiles 40 x 40 cm  
– 3 separate anti rust treatments

Base options 2-3-4-5-6



## BASE OPTIONS

### 1 - EXTRA WEIGHT BREEZER PLATE

2 x 13,5 kg  
– 5 mm steel  
– Sandblasted, metallized and powder coated

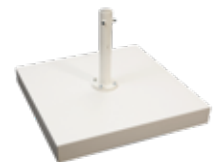
**Colours**  
white RAL 9010 – black RAL 9005

**Wind resistance**  
5 Bft (38km/h –24mph)



### 4 - COVER PLATE FOR TILE BASE

140/200 kg  
– 90.4 x 90.4 x 10.9 / 14.9 cm  
– 18 kg, 2mm steel



### 2 - 4 CASTORS FOR TILE BASE

With brakes



### 5 - TILTING DEVICE



### 3 - ANTI-THEFT SCREW AND KEY



### 6 - ANY RAL COLOUR



## COLOURS SUNVISION



SV-8860  
Ecru



SV-8873  
Ardoise

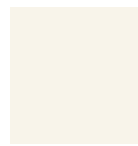


SV-U349  
Sky



SV-U351  
Mallow

## COLOURS FLAG FABRIC



White



Light Quaseo



Bla Bla table  
white RAL 9010 – black RAL 9005



Coupe + Bla Bla table  
only in black RAL 9005